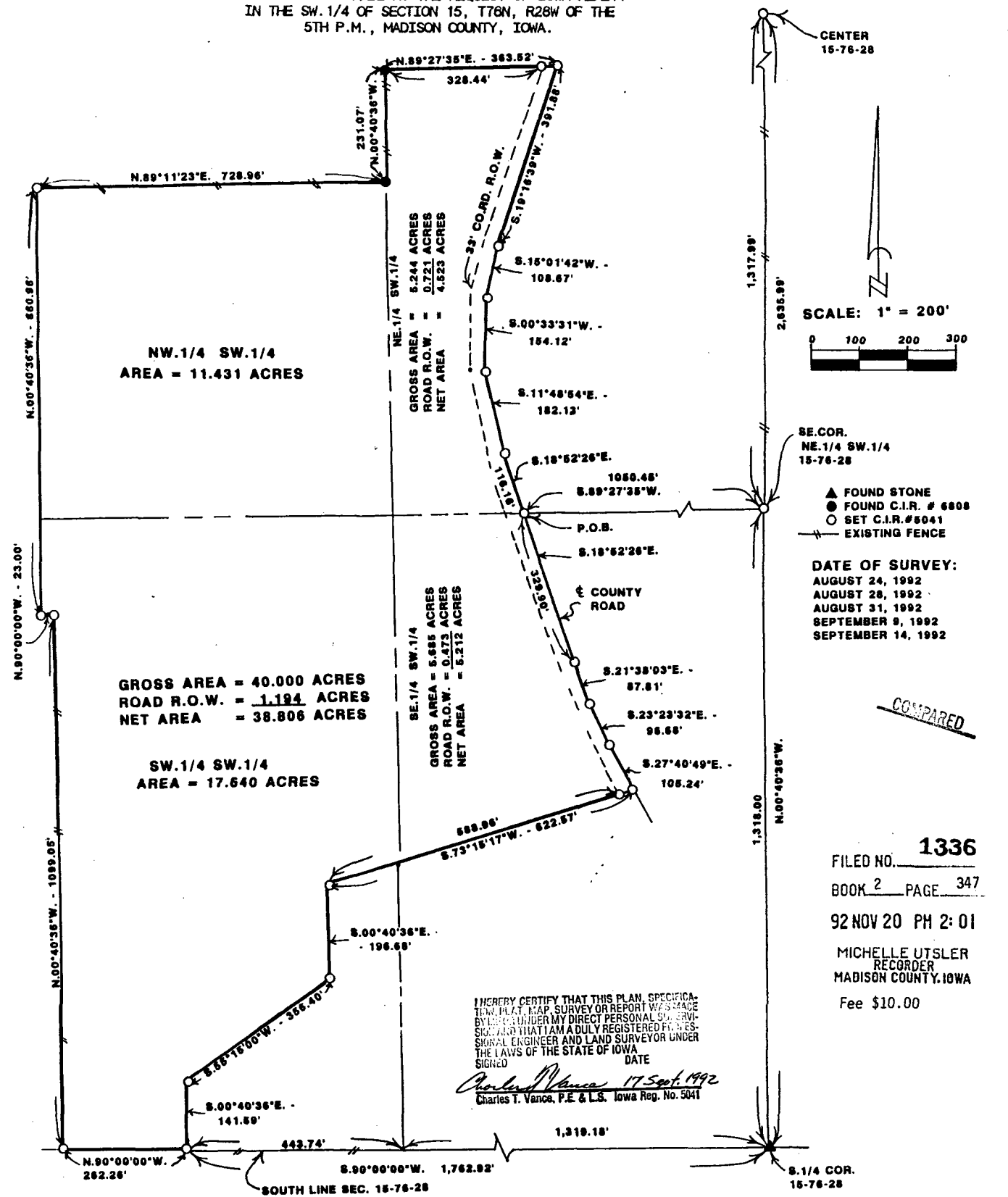


PLAT OF SURVEY MADE AT THE REQUEST OF IOWA REALTY  
IN THE SW. 1/4 OF SECTION 15, T76N, R28W OF THE  
5TH P.M., MADISON COUNTY, IOWA.



CENTER  
15-76-28

SCALE: 1" = 200'

0 100 200 300

SE. COR.  
NE. 1/4 SW. 1/4  
15-76-28

▲ FOUND STONE  
● FOUND C.I.R. # 6808  
○ SET C.I.R. # 6041  
--- EXISTING FENCE

DATE OF SURVEY:  
AUGUST 24, 1992  
AUGUST 28, 1992  
AUGUST 31, 1992  
SEPTEMBER 9, 1992  
SEPTEMBER 14, 1992

NW. 1/4 SW. 1/4  
AREA = 11.431 ACRES

NE. 1/4 SW. 1/4  
GROSS AREA = 5.244 ACRES  
ROAD R.O.W. = 0.721 ACRES  
NET AREA = 4.523 ACRES

GROSS AREA = 40.000 ACRES  
ROAD R.O.W. = 1.194 ACRES  
NET AREA = 38.806 ACRES

SE. 1/4 SW. 1/4  
GROSS AREA = 5.685 ACRES  
ROAD R.O.W. = 0.473 ACRES  
NET AREA = 5.212 ACRES

SW. 1/4 SW. 1/4  
AREA = 17.640 ACRES

I HEREBY CERTIFY THAT THIS PLAN, SPECIFICALLY THIS MAP SURVEY OR REPORT WAS MADE BY ME UNDER MY DIRECT PERSONAL SUPERVISION AND THAT I AM A DULY REGISTERED PROFESSIONAL ENGINEER AND LAND SURVEYOR UNDER THE LAWS OF THE STATE OF IOWA

SIGNED \_\_\_\_\_ DATE 17 Sept. 1992  
Charles T. Vance, P.E. & L.S. Iowa Reg. No. 5041

COMPARED

FILED NO. 1336  
BOOK 2 PAGE 347  
92 NOV 20 PM 2:01  
MICHELLE UTSLER  
RECORDER  
MADISON COUNTY, IOWA  
Fee \$10.00

DESCRIPTION:  
A parcel of land located in the Southwest Quarter of Section 15, Township 76 North, Range 28 West of the 5th Principal Meridian, Madison County, Iowa, more particularly described as follows:  
Commencing at the Southeast Corner of the NE. 1/4 of the SW. 1/4 of Section 15, T76N, R28W of the 5th P.M., Madison County, Iowa; thence, along the South line of said NE. 1/4 of the SW. 1/4, South 89°27'35" West 1050.45 feet to the centerline of county road and the Point of Beginning; thence, along said centerline, South 18°52'26" East 329.90 feet; thence South 21°38'03" East 87.81 feet; thence South 23°23'32" East 96.68 feet; thence South 27°40'49" East 105.24 feet; thence, departing said centerline, South 73°15'17" West 622.57 feet; thence South 00°40'36" East 196.68 feet; thence South 55°15'00" West 356.40 feet; thence South 00°40'38" East 141.59 feet to the South line of said Section 15; thence, along said South line, North 80°00'00" West 262.26 feet; thence North 00°40'36" West 1099.05 feet; thence North 89°11'23" East 728.96 feet; thence North 00°40'38" West 231.07 feet; thence North 89°27'35" East 363.52 feet to the centerline of a county road; thence, along said centerline, South 19°16'38" West 391.88 feet; thence South 15°01'42" West 108.67 feet; thence South 00°33'31" West 154.12 feet; thence South 11°48'54" East 182.13 feet; thence South 18°52'26" East 116.16 feet to the Point of Beginning. Said parcel of land contains 40.000 acres, including 1.194 acres of county road right of way.



VANCE & HOCHSTETLER, P.C.  
CONSULTING ENGINEERS  
71 JEFFERSON STREET  
WINTERSSET, IOWA 50273