

FOR DEDICATION, RESOLUTION &  
CERTIFICATES - SEE  
DEED RECORD 139, PAGE 558

COMPUTER   
RECORDED   
COMPARED

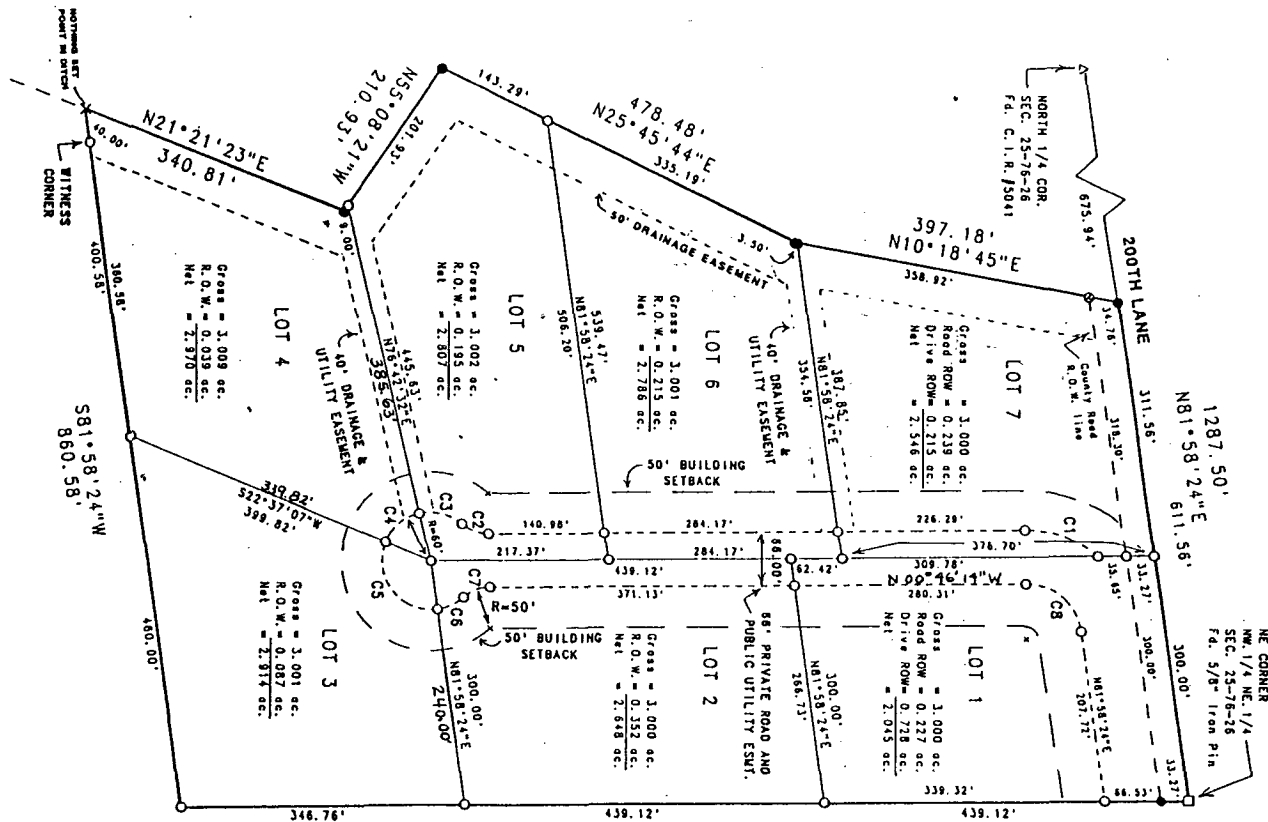
Plat  
FILED NO. 1155-J

BOOK 3 PAGE 319

98 SEP -8 PM 4:09

MICHELLE UTSLER  
RECORDER  
MADISON COUNTY, IOWA

VANCE & HOCHSTETLER, P.C. CONSULTING ENGINEERS, WINTERSET, IOWA (515)462-3995  
CHARLES T. VANCE 110 WEST GREEN ST., WINTERSET, IOWA 50273  
JAMES M. HOCHSTETLER, 110 WEST GREEN ST., WINTERSET, IOWA 50273

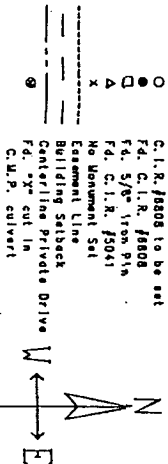


S 0°46'14\"/>

CURVE	RAIUS	DELTA	LENGTH	TANGENT	CHORD	CHORD BEARING	CHORD	DEGREE
C1	131.00'	41°-00'-42\"/>						

CURVE TABLE

LEGEND



LEGAL DESCRIPTION:  
Parcel "D" which is a part of Parcel "C", located in the Northwest Quarter of the Northeast Quarter of Section 25, Township 78 North, Range 26 West of the 5th P.M., Madison County, Iowa, more particularly described as follows:  
Beginning at the Northeast corner of the Northwest Quarter of the Northeast Quarter of Section 25, Township 78 North, Range 26 West of the 5th P.M., Madison County, Iowa; thence South 0°46'14\"/>

I hereby certify that the foregoing is a true and correct copy of the original plat as recorded in the public records of Madison County, Iowa, and that the same has been duly recorded in the public records of Madison County, Iowa, this 21st day of September, 1998.  
MICHELLE UTSLER  
RECORDER  
MADISON COUNTY, IOWA

**FINAL PLAT**  
WOODS ADDITION  
SEC. 25-78N-26W  
MADISON COUNTY, IA.  
OWNER/DEVELOPER:  
Dennis Woods  
799 Geneva Street  
Indianola, IA, 50125  
ENGINEER/SURVEYOR:  
Vance & Hochstetler, PC  
Consulting Engineers  
110 West Green Street  
Winterset, IA, 50273  
Ph. (515)462-3995