

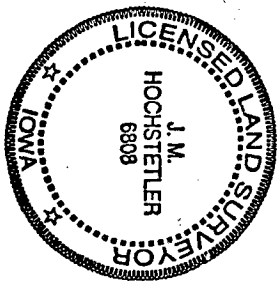
FOR DEDICATION, RESOLUTION & CERTIFICATES, SEE DEED RECORD 143-277

FILED NO. 7307-1 BOOK 3 PAGE 654

2000 DEC -5 AM 8:03

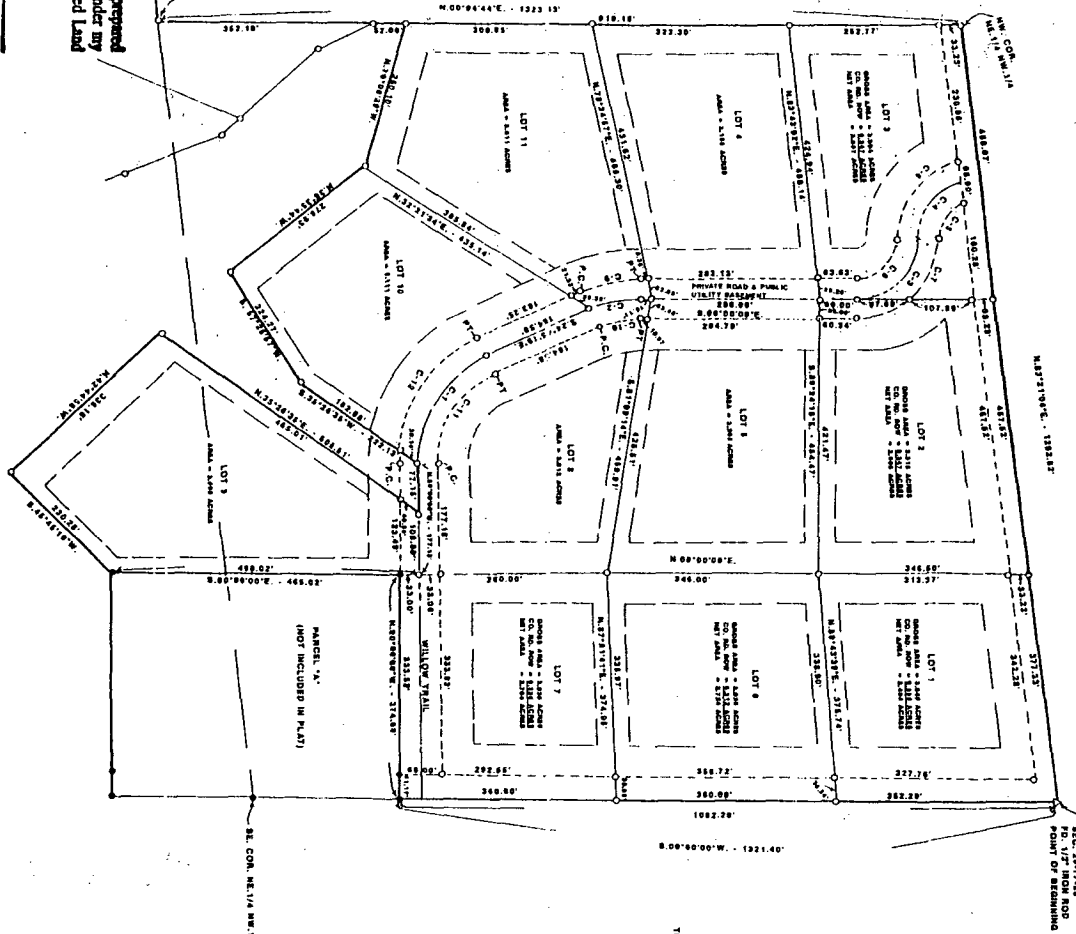
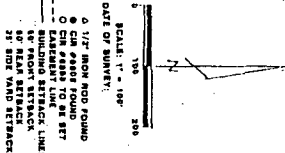
MICKI UTSLER RECORDER MADISON COUNTY, IOWA

VANCE & HOCHSTETLER, P.C. CONSULTING ENGINEERS, WINTERSET, IOWA (515) 462-3995 CHARLES T. VANCE, 110 WEST GREEN ST., WINTERSET, IOWA 50273 JAMES M HOCHSTETLER, 110 WEST GREEN ST., WINTERSET, IOWA 50273



LEGAL DESCRIPTION - WALNUT COVE ESTATES PLAT NO. 1 A parcel of land in the East Half of the Northwest Quarter of Section 21, Township 77 North, Range 23 West of the 7th M., Madison County, Iowa, being approximately contained as follows: ...

Table with columns for bearings, distances, and bearings. Includes a section for 'E. ROAD CORNER DATA' and 'EASEMENT CORNER DATA'.



I hereby certify that this land conveying document was prepared and the related survey work was performed by me or under my direct personal supervision and that I am a duly licensed Land Surveyor under the laws of the State of Iowa.

J.M. HOCHSTETLER

License number 6808

Date 12/2/2000

My license renewal date is December 31, 2001

Signs or stakes covered by this seal.

TOTAL AREA = 32.091 ACRES

DATE OF PLAT: 4/19/2000 FINAL PLAT WALNUT COVE ESTATES PLAT NO. 1 OWNERS/DEVELOPER: ROBERT TRALISCH, 725 MONTWELL AVENUE, AUBURN, IOWA 50023 ENGINEER/SURVEYOR: VANCE & HOCHSTETLER, P.C., CONSULTING ENGINEERS, 110 WEST GREEN ST., WINTERSET, IOWA 50273