

FOR DEDICATION,
RESOLUTION &
CERTIFICATES SEE
DEED RECORD 142-358

FARM PLAT 3

552

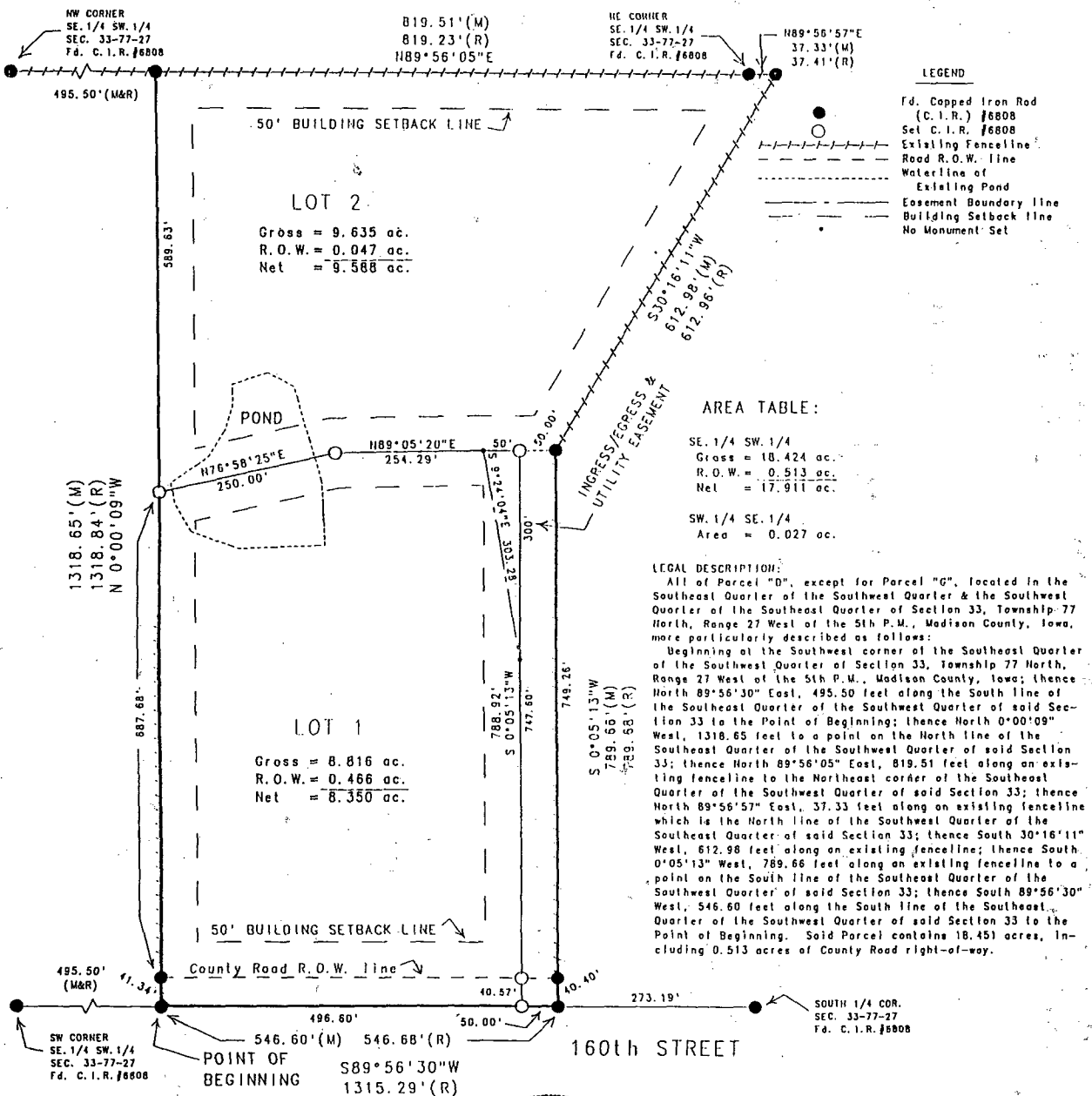
FILED NO. 3403-1
BOOK 3 PAGE 552

2600 MAR 15 PM 3: 14

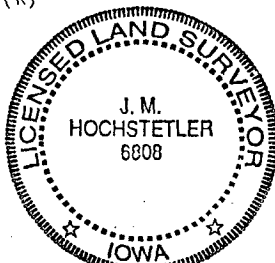
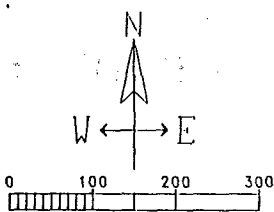
MICHELLE UTSLER
RECORDER
MADISON COUNTY, IOWA

VANCE & HOCHSTETLER, P.C. CONSULTING ENGINEERS, WINTERSSET, IOWA (515) 462-3995
CHARLES T. VANCE, 110 WEST GREEN ST., WINTERSSET, IOWA 50273
JAMES M HOCHSTETLER, 110 WEST GREEN ST., WINTERSSET, IOWA 50273

FINAL PLAT
NORTH RIVER SUBDIVISION



DATE OF PLAT:
December 16, 1999
SCALE: 1" = 100'



I hereby certify that this land surveying document was prepared and the related survey work was performed by me or under my direct supervision and that I am a duly licensed Land Surveyor under the laws of the State of Iowa.

J.M. Hochstetler
J.M. HOCHSTETLER

License number 6808 Date 3/31/2000
My license renewal date is December 31, 2001
Pages or sheets covered by this seal: 1

FINAL PLAT NORTH RIVER SUBDIVISION
OWNER/SUBDIVIDER: Larry & Micki Utsler 1718 South 4th Ave. Winterset, IA, 50273
ENGINEER/SURVEYOR: Vance & Hochstetler, PC Consulting Engineers 110 West Green Street Winterset, IA, 50273 Ph. (515) 462-3995 Fax (515) 462-9845