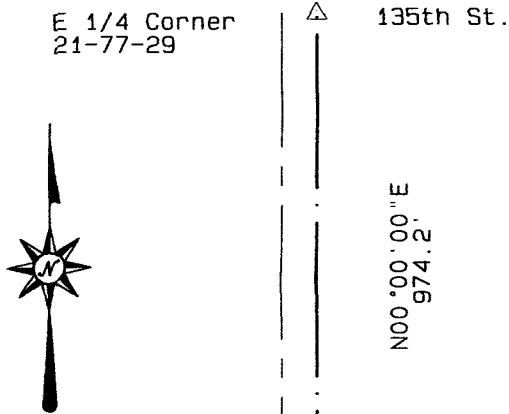




INDX ✓
ANNO
SCAN
CHK

LISA SMITH, COUNTY RECORDER
MADISON COUNTY IOWA

Prepared By: Kenneth E. Coffman, PE/LS 909 Poplar St. Atlantic, IA 50022 712-243-3015



Plat of Survey

Parcel A

Southeast Quarter Section 21-77-29 Madison County, Iowa

Legal Description of Parcel A of the Southeast Quarter of Section 21, Township 77 North Range 29 West of the 5th P.M. in Madison County, Iowa.

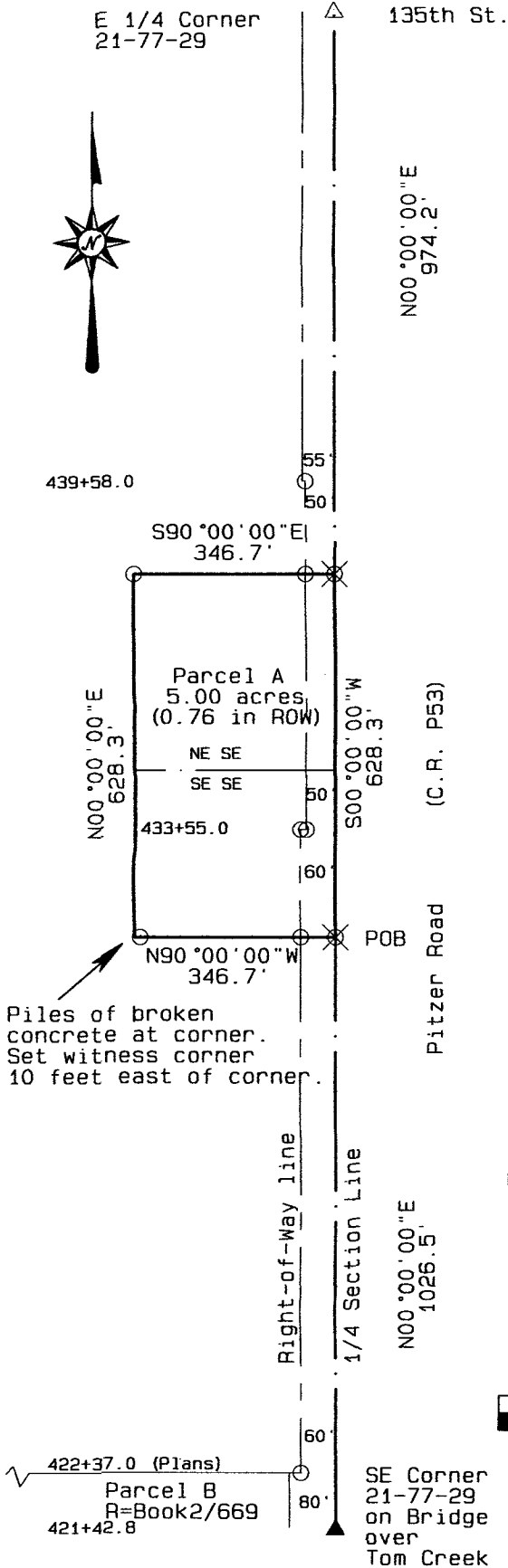
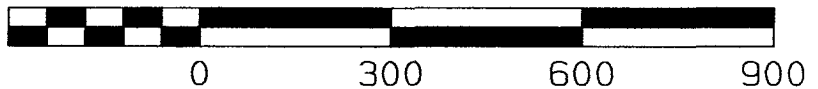
Commencing at the Southeast Corner of Section 21, Township 77 North, Range 29 West of the 5th P.M. Madison County, Iowa;
thence North 00°00'00" East along the east line of the Southeast Quarter, a distance of 1026.5 feet to the Point of Beginning;
thence North 90°00'00" West, a distance of 346.7 feet;
thence North 00°00'00" East, a distance of 628.3 feet;
thence South 90°00'00" East, a distance of 346.7 feet to the east line of said Southeast Quarter;
thence South 00°00'00" West, a distance of 628.3 feet to the Point of Beginning.
Containing 5.00 ACRES, more or less.

The bearing of the east line of the Southeast Quarter is assumed to bear North 00°00'00" East for purposes of this description.

Stationing taken from 1973 Plans of Project SN-809 (8) --51-61

NE SE 2.71 acres including 0.39 in ROW.
SE SE 2.29 acres including 0.37 in ROW.

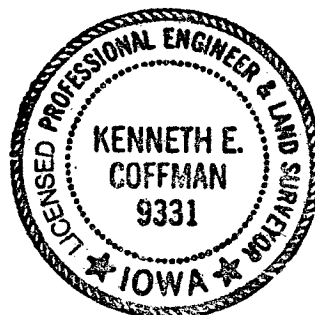
GRAPHIC SCALE 1" = 300'



Piles of broken concrete at corner. Set witness corner 10 feet east of corner.

Legend

- set 1/2" diam rebar w/red plastic cap "COFFMAN 9331"
 - ⊗ chiseled X in concrete pavement
 - △ chiseled X in concrete pavement at intersection of ties from corner certificate
 - ▲ found cut X on bridge deck (section corner of record)
- R= recorded M= measured P=Platted
Proprietor: Florence M. Day
Survey Requested By: Scott Day
Dates of Survey: February 11-12, 2011



I hereby certify that this land surveying document was prepared by me or under my direct supervision and that I am a duly Licensed Land Surveyor under the laws of the State of Iowa.

Kenneth E. Coffman Lic. No. 9331

Kenneth E. Coffman
Signature

Date 2/14/2011

Pages or sheets covered by this seal 1

My renewal date is December 31, 2011