



Document 2011 328

Book 2011 Page 328 Type 06 043 Pages 1
Date 1/31/2011 Time 11:44 AM
Rec Amt \$9.00

INDX ✓
ANNO ✓
SCAN
CHEK

LISA SMITH, COUNTY RECORDER
MADISON COUNTY IOWA

R. BRADLEY STUMBO P.O. BOX 1664 AMES, IOWA 50010 Phone 515-233-3689

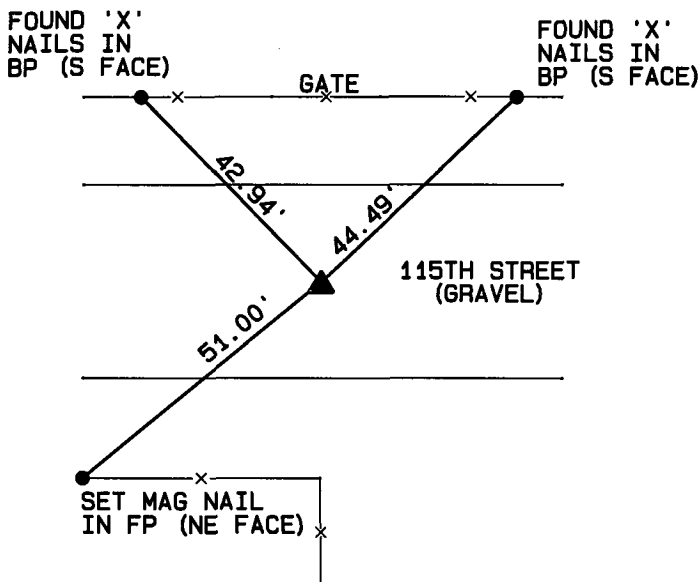
UNITED STATES PUBLIC LAND SURVEY CORNER CERTIFICATE OF

Land Survey Monuments situated in Section 7, Township 77 North, Range 28 West of the Fifth Principal Meridian, Madison County, Iowa.

Previously recorded CENTER-BOOK 1, PAGE 682
(BOOK, PAGE / DIST. NO. / CABINET, SLIDE)

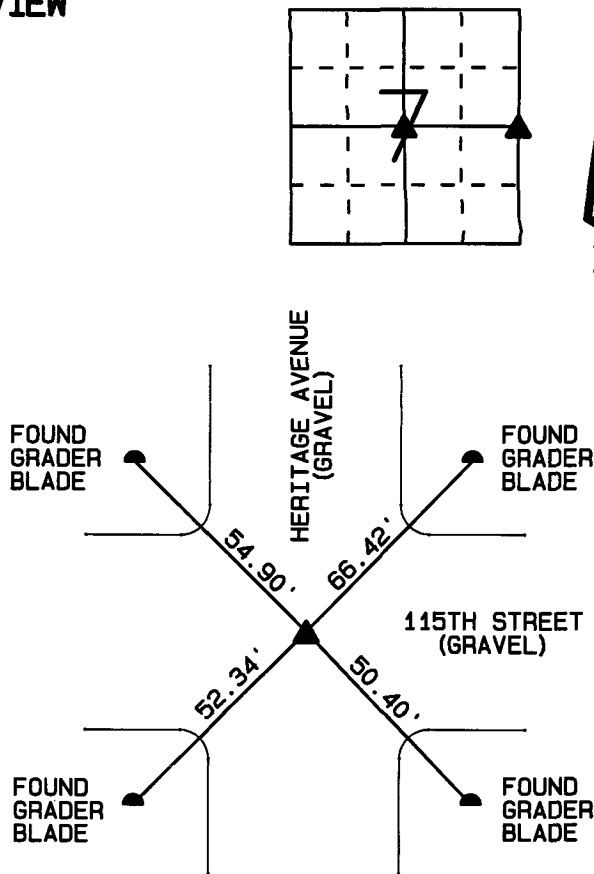
Monument Description and Remarks: THIS CERTIFICATE HAS BEEN PREPARED BECAUSE
CENTER-THE TIES HAVE CHANGED
E 1/4 COR-THERE ARE NONE OF RECORD FOR THIS CORNER.

PLAN - VIEW



CENTER SECTION 7-77-28

FOUND 5/8" REBAR W/ YELLOW CAP #7995
0.4' DEEP, USING A PREVIOUS CERTIFICATE
OF RECORD.

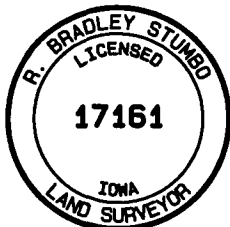


E1/4 CORNER SECTION 7-77-28

FOUND 1" PIPE, 0.2' DEEP, USING MADISON
COUNTY ENGINEER'S TIES.

Certification: I hereby certify that this land surveying document was prepared and the related survey work was performed by me or under my direct personal supervision and that I am a duly licensed Land Surveyor under the laws of the State of Iowa.

R. Bradley Stumbo Date: 1-25-11
R. Bradley Stumbo License #17161
My license renewal date is December 31, 2011



List Corners to be Indexed

Corners	Section	Twp	Range
CENTER	7	77	28
E 1/4 COR	7	77	28