



Document 2010 2645

Book 2010 Page 2645 Type 06 043 Pages 1  
Date 10/25/2010 Time 12:44 PM  
Rec Amt \$9.00

INDX ✓  
ANNO ✓  
SCAN ✓  
CHEK

LISA SMITH, COUNTY RECORDER  
MADISON COUNTY IOWA

Daniels Land Surveying, 22598 18th Avenue, New Virginia, IA 50210, 641-449-3259

# UNITED STATES PUBLIC LAND CORNER CERTIFICATE OF

Land Survey Monuments situated in Section 18, Township 74 N, Range 26 W, of the  
5th P.M., Madison County, Iowa. Previously recorded in n.a.  
in County Recorders Office. (book, page, document number, etc.)

(Show reason for preparing this certificate, the evidence and detailed procedures used in  
establishing the corner positions and monumentation found or placed.)

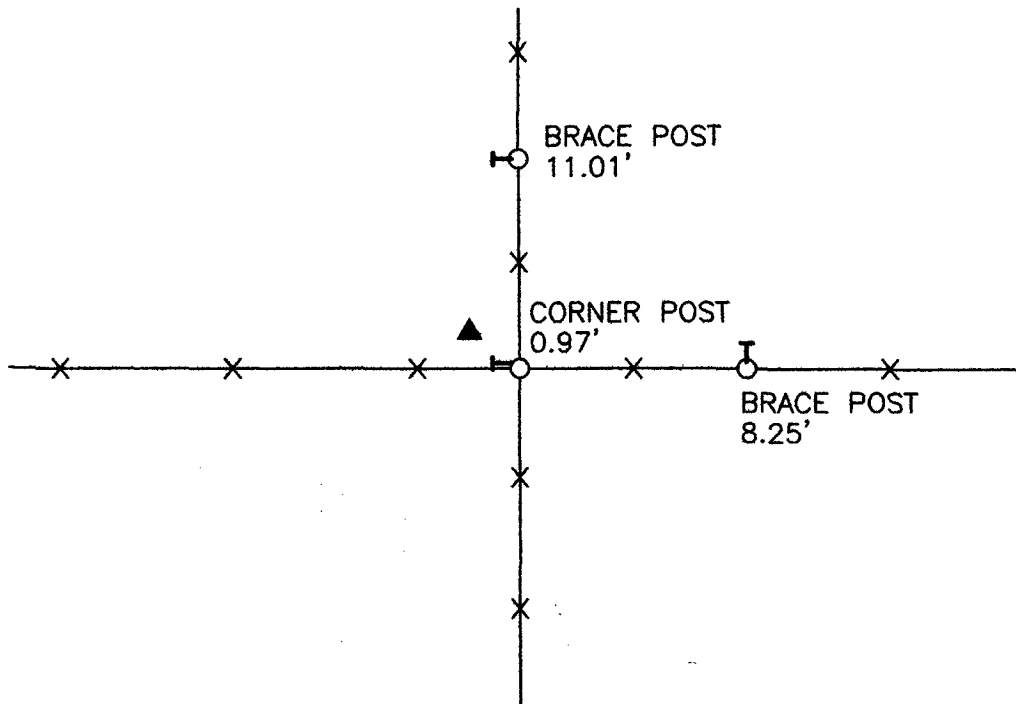
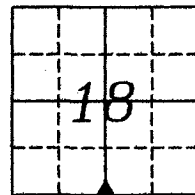
### Monument Description and Remarks:

Existing monument had been removed by fence construction. Replaced monument  
with a 1/2" x 24" red plastic capped rebar, #17532 from Subdivision Plat for  
Cummings Park Plat No. 1

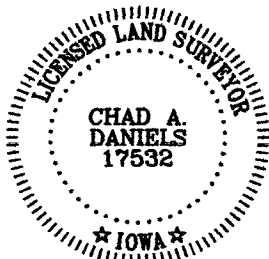
## PLAN VIEW

(Show a minimum of three reference ties to durable physical objects, relevant monuments  
and physical conditions that will enable recovery of the corner.)

ALL TIES TO 30d SPIKES UNLESS NOTED



S 1/4 CORNER, SECTION 18



I hereby certify that this land surveying document was prepared and the  
related survey work was performed by me or under my direct personal  
supervision and that I am a duly licensed Land Surveyor under the laws  
of the State of Iowa.

Signature: Chad A. Daniels Date: 10/23/2010

License number 17532  
My license renewal date is December 31, 2010