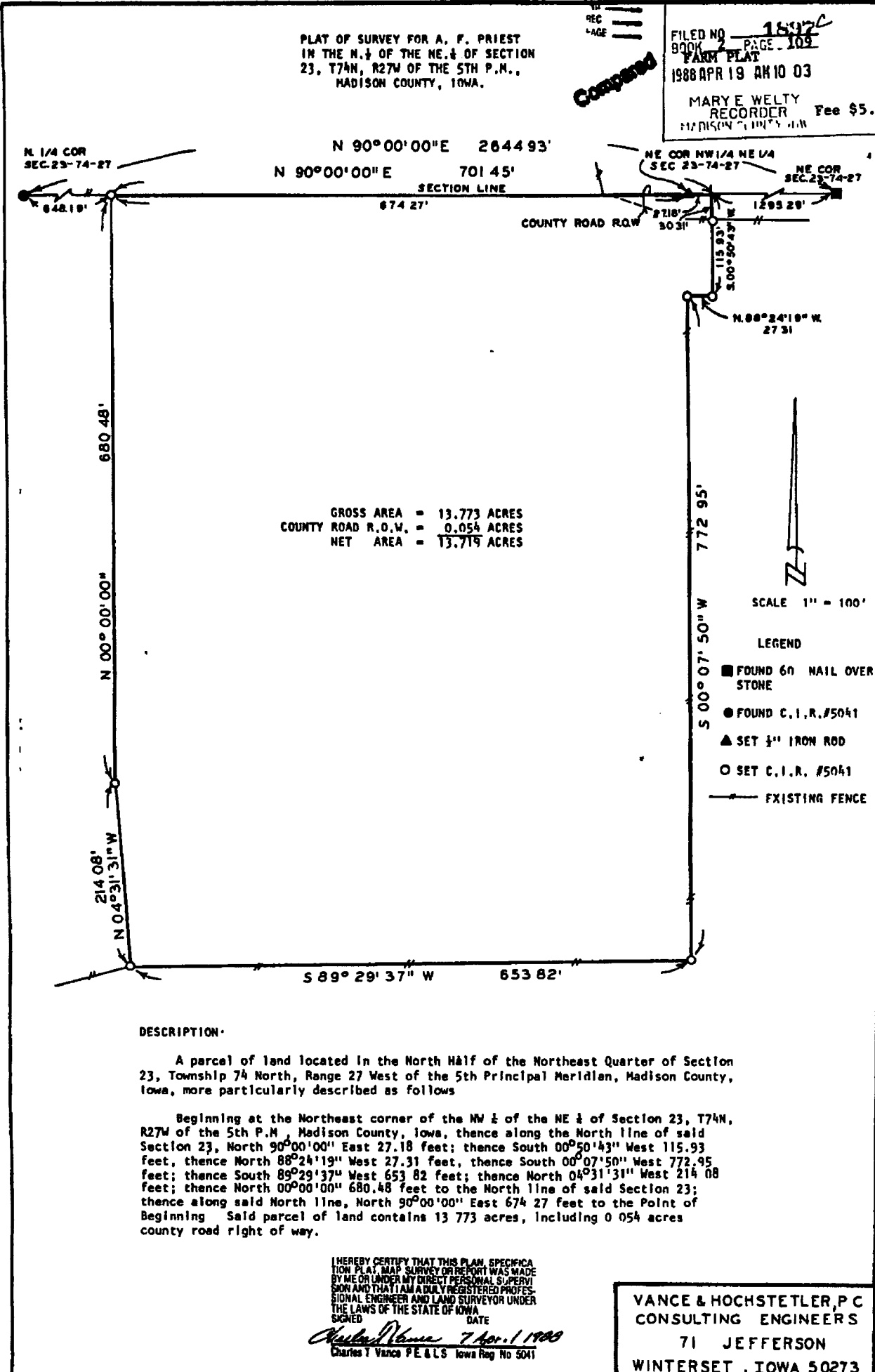


PLAT OF SURVEY FOR A. F. PRIEST
 IN THE N. 1/4 OF THE NE. 1/4 OF SECTION
 23, T74N, R27W OF THE 5TH P.M.,
 MADISON COUNTY, IOWA.

REC
 AGE
Completed

FILED NO. 1897
 BOOK 2 PAGE 109
 FARM PLAT
 1988 APR 19 AM 10 03

MARY E. WELTY
 RECORDER Fee \$5.00
 MADISON COUNTY, IOWA



GROSS AREA = 13.773 ACRES
 COUNTY ROAD R.O.W. = 0.054 ACRES
 NET AREA = 13.719 ACRES

DESCRIPTION

A parcel of land located in the North Half of the Northeast Quarter of Section 23, Township 74 North, Range 27 West of the 5th Principal Meridian, Madison County, Iowa, more particularly described as follows

Beginning at the Northeast corner of the NW 1/4 of the NE 1/4 of Section 23, T74N, R27W of the 5th P.M., Madison County, Iowa, thence along the North line of said Section 23, North 90°00'00" East 27.18 feet; thence South 00°50'43" West 115.93 feet; thence North 88°24'19" West 27.31 feet; thence South 00°07'50" West 772.95 feet; thence South 89°29'37" West 653.82 feet; thence North 04°31'31" West 214.08 feet; thence North 00°00'00" 680.48 feet to the North line of said Section 23; thence along said North line, North 90°00'00" East 674.27 feet to the Point of Beginning. Said parcel of land contains 13.773 acres, including 0.054 acres county road right of way.

I HEREBY CERTIFY THAT THIS PLAN, SPECIFICATION, PLAT, MAP, SURVEY OR REPORT WAS MADE BY ME OR UNDER MY DIRECT PERSONAL SUPERVISION AND THAT I AM A DULY REGISTERED PROFESSIONAL ENGINEER AND LAND SURVEYOR UNDER THE LAWS OF THE STATE OF IOWA.
 SIGNED *Charles F. Vance* DATE 7 Apr. 1 1988
 Charles F. Vance P.E. & L.S. Iowa Reg. No. 5041

VANCE & HOCHSTETLER, P.C.
 CONSULTING ENGINEERS
 71 JEFFERSON
 WINTERSET, IOWA 50273