

INDEX ✓
ANNO ✓
SCAN

LISA SMITH, COUNTY RECORDER
MADISON IOWA

CHEK

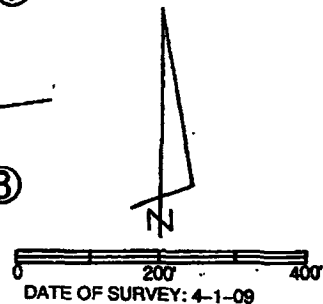
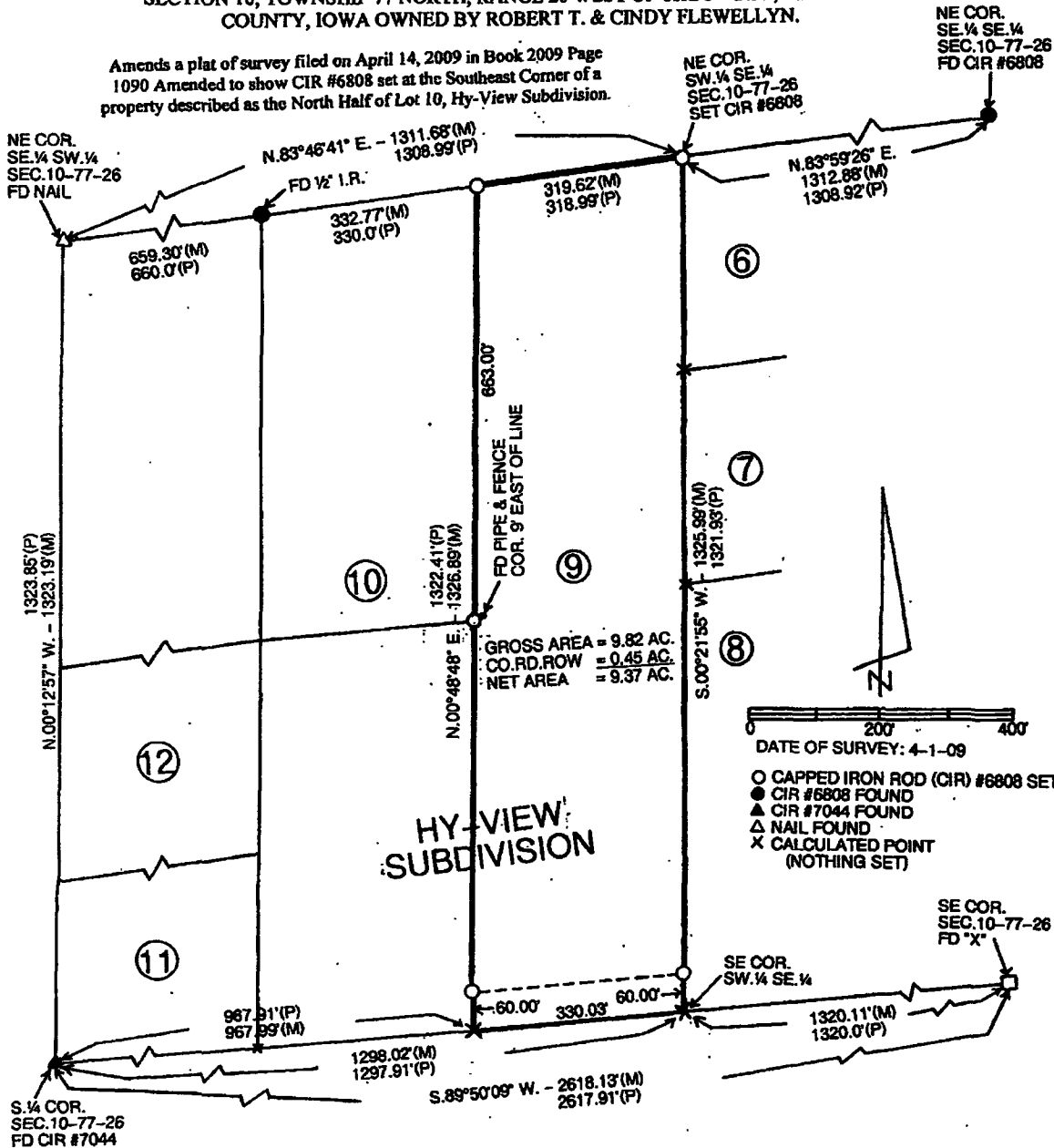
VANCE & HOCHSTETLER, P.C. • CONSULTING ENGINEERS • WINTERSET. IOWA • 50273

09-28s

CHARLES T. VANCE • 110 WEST GREEN ST., WINTERSET, IOWA • (515) 462-3995
JAMES M HOCHSTETLER • 110 WEST GREEN ST., WINTERSET, IOWA • FAX: (515) 462 9845

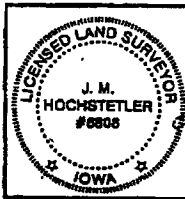
AMENDED PROPERTY LINE RETRACEMENT SURVEY OF LOT 9, HY-VIEW
SUBDIVISION IN THE SOUTHWEST QUARTER OF THE SOUTHEAST QUARTER OF
SECTION 10, TOWNSHIP 77 NORTH, RANGE 26 WEST OF THE 5TH P.M., MADISON
COUNTY, IOWA OWNED BY ROBERT T. & CINDY FLEWELLYN.

Amends a plat of survey filed on April 14, 2009 in Book 2009 Page
1090 Amended to show CIR #6808 set at the Southeast Corner of a
property described as the North Half of Lot 10, Hy-View Subdivision.



- CAPPED IRON ROD (CIR) #6808 SET
- CIR #6808 FOUND
- ▲ CIR #7044 FOUND
- △ NAIL FOUND
- X CALCULATED POINT (NOTHING SET)

HY-VIEW SUBDIVISION



I hereby certify that this land surveying document was prepared and the related survey work was performed by me or under my direct personal supervision and that I am a duly licensed Land Surveyor under the laws of the State of Iowa.

J.M. Hochstetler
 J.M. HOCHSTETLER
 License number 6808 Date 4/22/09
 My license renewal date is December 31, 2012
 Pages or sheets covered by this set: 1