

INDEX
ANNO
SCAN
CHEK

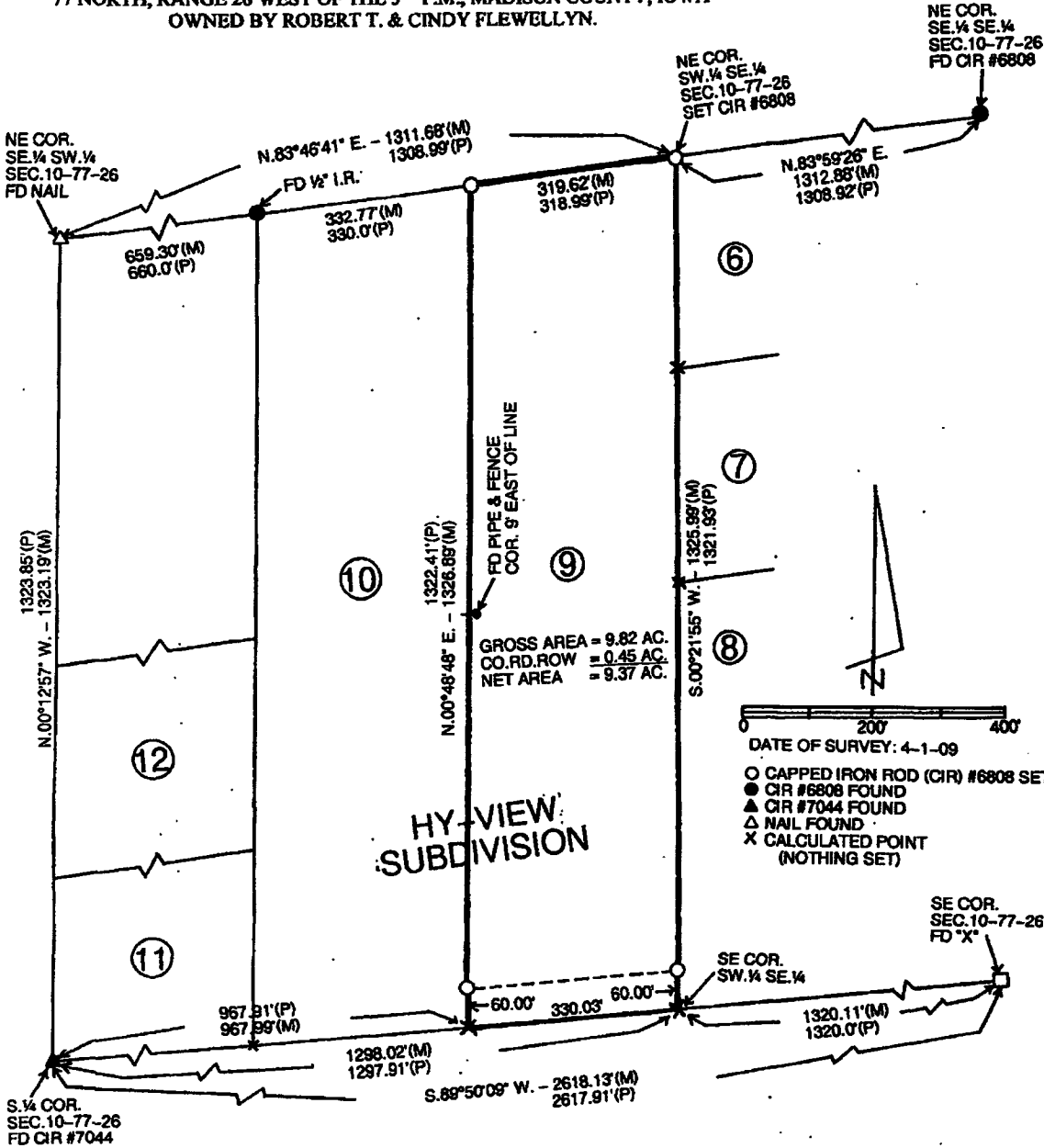
LISA SMITH, COUNTY RECORDER
MADISON IOWA

VANCE & HOCHSTETLER, P.C. • CONSULTING ENGINEERS • WINTERSET. IOWA • 50273

JA-285

CHARLES T. VANCE • 110 WEST GREEN ST., WINTERSET, IOWA • (515) 462-3995
JAMES M HOCHSTETLER • 110 WEST GREEN ST., WINTERSET, IOWA • FAX: (515) 462 9845

PROPERTY LINE RETRACEMENT SURVEY OF LOT 9, HY-VIEW SUBDIVISION IN THE
SOUTHWEST QUARTER OF THE SOUTHEAST QUARTER OF SECTION 10, TOWNSHIP
77 NORTH, RANGE 26 WEST OF THE 5TH P.M., MADISON COUNTY, IOWA
OWNED BY ROBERT T. & CINDY FLEWELLYN.



I hereby certify that this land surveying document was prepared and the related survey work was performed by me or under my direct personal supervision and that I am a duly licensed Land Surveyor under the laws of the State of Iowa.

J. M. Hochstetler
J. M. HOCHSTETLER
#6808

L.M. HOCHSTETLER
License number 6808 Date 4/19/09
My license renewal date is December 31, 2009
Pages or sheets covered by this set: 1