

INDX ✓  
ANNO  
SCAN  
CHK

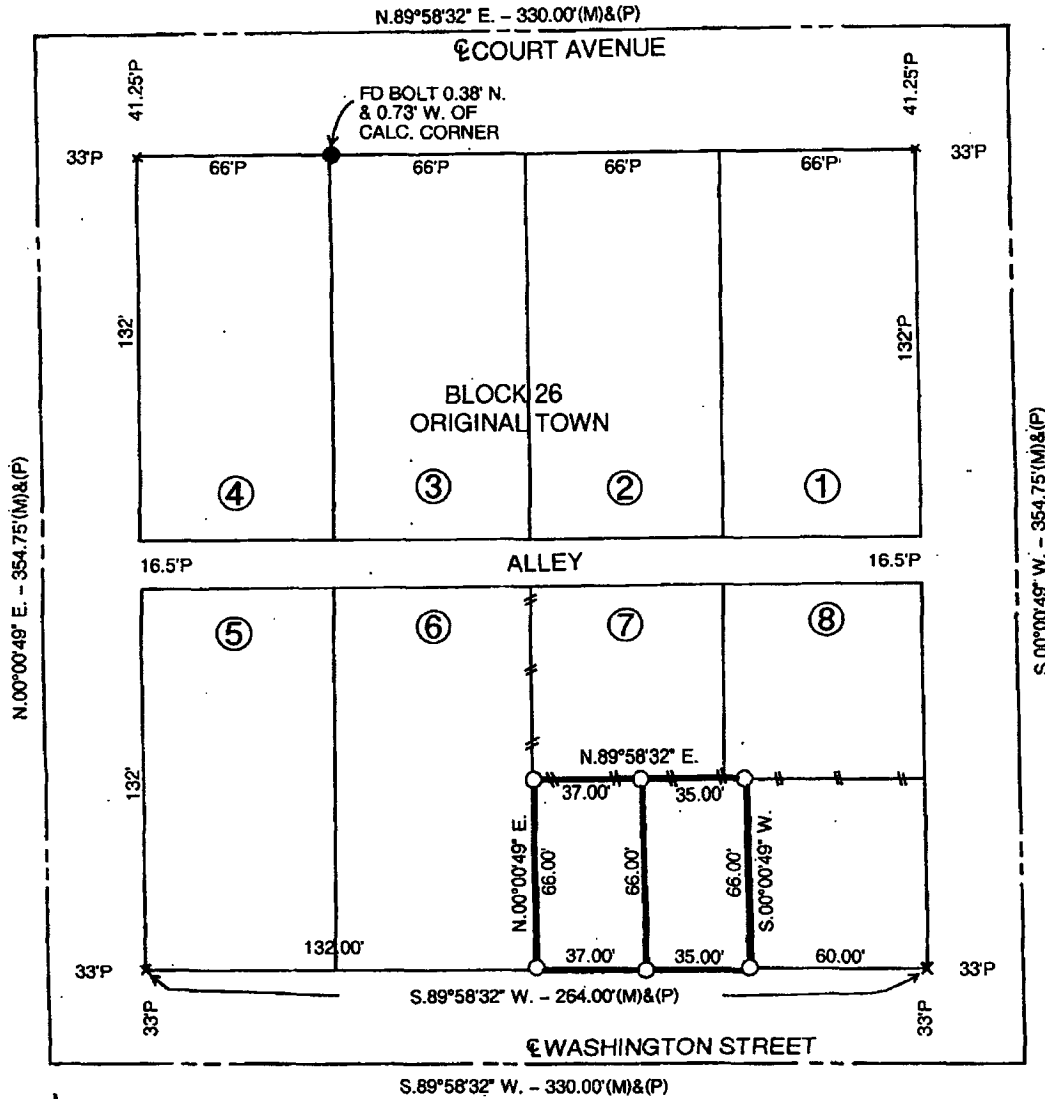
LISA SMITH, COUNTY RECORDER  
MADISON IOWA

VANCE & HOCHSTETLER, P.C. • CONSULTING ENGINEERS • WINTERSET, IOWA • 50273

09-224

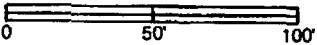
CHARLES T. VANCE • 110 WEST GREEN ST., WINTERSET, IOWA • (515) 462-3995  
JAMES M HOCHSTETLER • 110 WEST GREEN ST., WINTERSET, IOWA • FAX: (515) 462 9845

PLAT OF SURVEY OF A PORTION OF LOTS 7 AND 8, BLOCK 26, ORIGINAL TOWN OF  
WINTERSET, MADISON COUNTY, IOWA OWNED BY STEPHEN M. DAVIS.



LEGAL DESCRIPTION:

West 37 feet of the South Half of Lot 7 in Block 26 and the East 29 feet of the South Half of Lot 7 and the West 6 feet of the South Half of Lot 8 in Block 26 all in the Original Town of Winterset, Madison County, Iowa.



DATE OF SURVEY: 3-25-09

- CAPPED IRON ROD (CIR) #6808 SET
- ROUND HEAD BOLT FOUND
- #-# EXISTING FENCE

I hereby certify that this land surveying document was prepared and the related survey work was performed by me or under my direct personal supervision and that I am a duly licensed Land Surveyor under the laws of the State of Iowa.

*J.M. Hochstetler*  
J.M. HOCHSTETLER  
License number 6808 Date 4/7/09  
My license renewal date is December 31, 2009  
Pages or sheets covered by this seal: 1

LICENSED LAND SURVEYOR  
J. M. HOCHSTETLER  
#6808  
IOWA