



Document 2010 2157

Book 2010 Page 2157 Type 06 043 Pages 1
Date 9/09/2010 Time 2:26 PM
Rec Amt \$9.00

INDX ✓
ANNO
SCAN
CHEK

LISA SMITH, COUNTY RECORDER
MADISON COUNTY IOWA

VANCE & HOCHSTETLER, P.C. CONSULTING ENGINEERS, WINTERSSET, IOWA (515)462-3995

10-785 CHARLES T. VANCE, 110 WEST GREEN ST., WINTERSSET, IOWA 50273
JAMES M. HOCHSTETLER, 110 WEST GREEN ST., WINTERSSET, IOWA 50273

UNITED STATES PUBLIC LAND SURVEY CORNER CERTIFICATE

OF

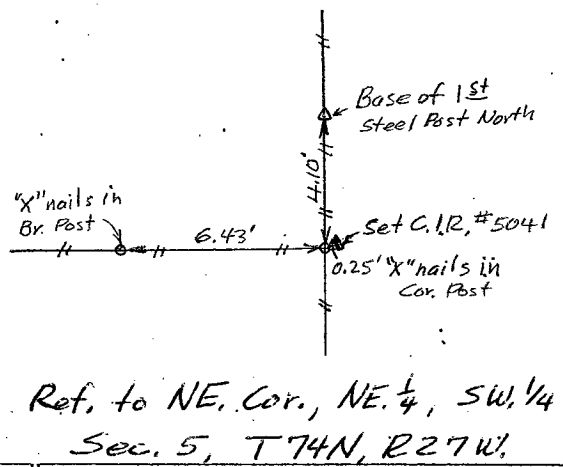
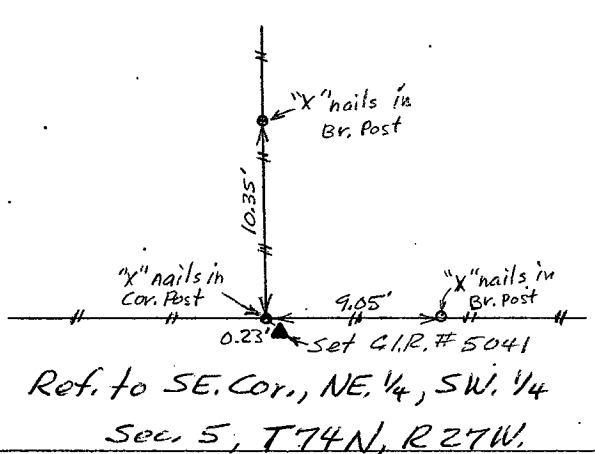
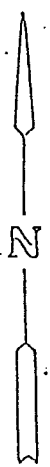
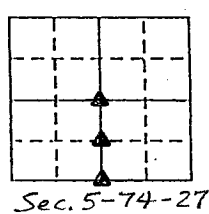
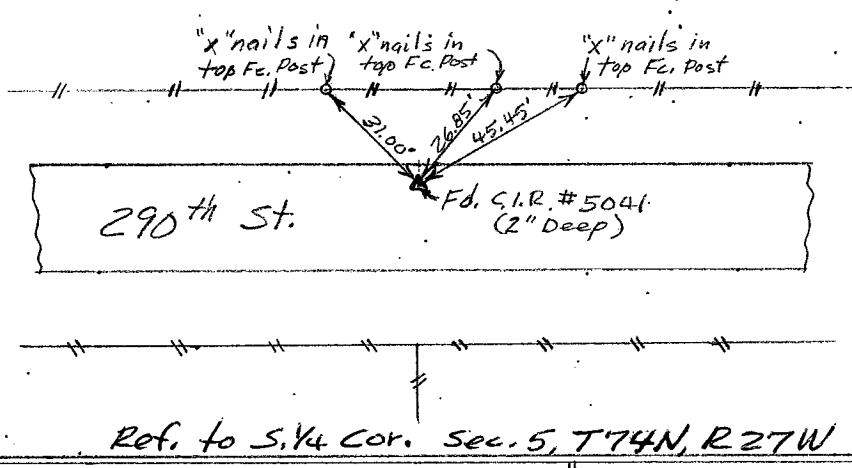
Land Survey Monuments situated in Section 5, Township T74 North, Range 27 West, of the Fifth Principal Meridian, Madison County, Iowa.
Previously recorded in N/A in County Recorder's Office.
(book, page, document number, etc.)

(Show reason for preparing this certificate, the evidence and detailed procedures used in establishing the corner positions and monumentation found or placed.)

Monument Description and Remarks: Found C.I.R. at S. 1/4 Cor. at mid-point of mile.
Set C.I.R. #5041 at intersection of 3 way property line fences for both
the SE. cor. and the NE. cor. of the NE 1/4 of the SW 1/4 of Section 5, T74N, R27W.

PLAN - VIEW

(Show a minimum of three reference ties to durable physical objects, relevant monuments and physical conditions that will enable recovery of the corner.)



I hereby certify that this land surveying document was prepared and the related survey work was performed by me or under my direct personal supervision and that I am a duly Licensed Land Surveyor under the laws of the State of Iowa.
Charles T. Vance 8/27/2010
Charles T. Vance, PE & PLS Date
License No. 5041
My License renewal date is 31, December 2011

Corners	List Corners to be Indexed Section	Twp	Range
S. 1/4 COR.	5	T74N	R27W
SE. COR.	5	T74N	R27W
NE 1/4 SW 1/4	5	T74N	R27W
NE COR.	5	T74N	R27W
NE 1/4 SW 1/4	5	T74N	R27W