



Document 2010 2155

Book 2010 Page 2155 Type 06 043 Pages 1
Date 9/09/2010 Time 2:25 PM
Rec Amt \$9.00

INDX ✓
ANNO
SCAN
CHEK

LISA SMITH, COUNTY RECORDER
MADISON COUNTY IOWA

VANCE & HOCHSTETLER, P.C., CONSULTING ENGINEERS, WINTERSSET, IOWA (515) 462-3995
CHARLES T. VANCE, 110 West Green St., Winterset, Iowa, 50273
JAMES M HOCHSTETLER, 110 West Green St., Winterset, Iowa 50273

10-925

UNITED STATES PUBLIC LAND SURVEY CORNER CERTIFICATE

Land Survey Monuments situated in Section 10 OF 10 Township 74 N Range 29 W of the Fifth Principal Meridian, MADISON County, Iowa. Previously recorded in _____ in County Recorder's Office. (book, page, document number, etc.)

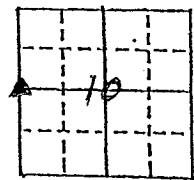
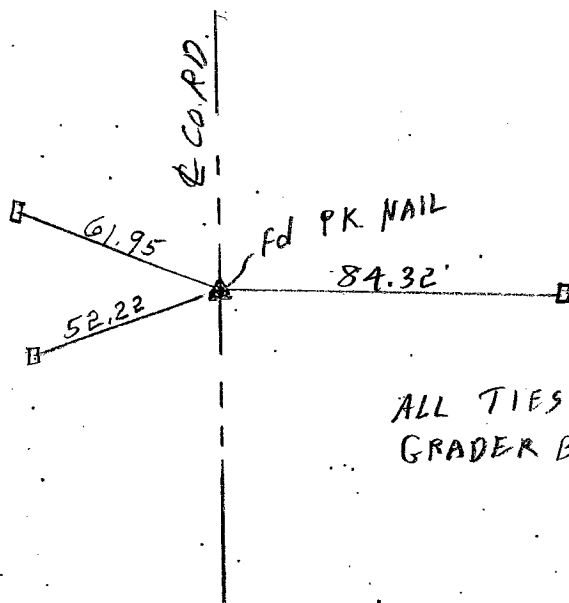
(Show reason for preparing this certificate, the evidence and detailed procedures used in establishing the the corner positions and monumentation found or placed.)

Monument Description and Remarks: W¹/₄ Cor - FOUND PK NAIL IN ASPHALT.
Ties are shown on plans for A.C.C. Pavement - New, FM-61(49)-55-61
and noted as PISTA 26+52.48. We found the grader blade
ties and the distances matched to the PK Nail.
The County's legal descriptions of right-of-way purchased
call this point out as the West Quarter Corner.

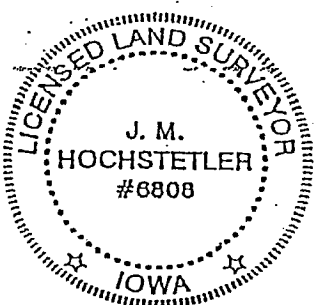
PLAN - VIEW

(Show a minimum of three reference ties to durable physical objects, relevant monuments and physical conditions that will enable recovery of the corner.)

W¹/₄ COR.
SEC. 10-74-29



ALL TIES TO
GRADER BLADES.



I hereby certify that this land surveying document was prepared and the related survey work was performed by me or under my direct personal supervision and that I am a duly licensed Land Surveyor under the laws of the State of Iowa.

J.M. Hochstetler
J.M. HOCHSTETLER
License number 6808 Date 8/19/10
My license renewal date is December 31 2011
Pages or sheets covered by this seal: 1

List Corners to be Indexed

Corners	Section	Twp	Range
W ¹ / ₄ COR.	10	74N	29W