



Document 2010 2129

Book 2010 Page 2129 Type 06 043 Pages 1
Date 9/08/2010 Time 2:37 PM
Rec Amt \$.00

INDX
ANNO
SCAN
CHEK

LISA SMITH, COUNTY RECORDER
MADISON COUNTY IOWA

Prepared By: Michael James Hackett, Madison County Engineer's Office, 1105 E. Court Ave., Winterset, Ia. 50273, Tel. (515) 462-1136

UNITED STATES PUBLIC LAND SURVEY CORNER CERTIFICATE OF

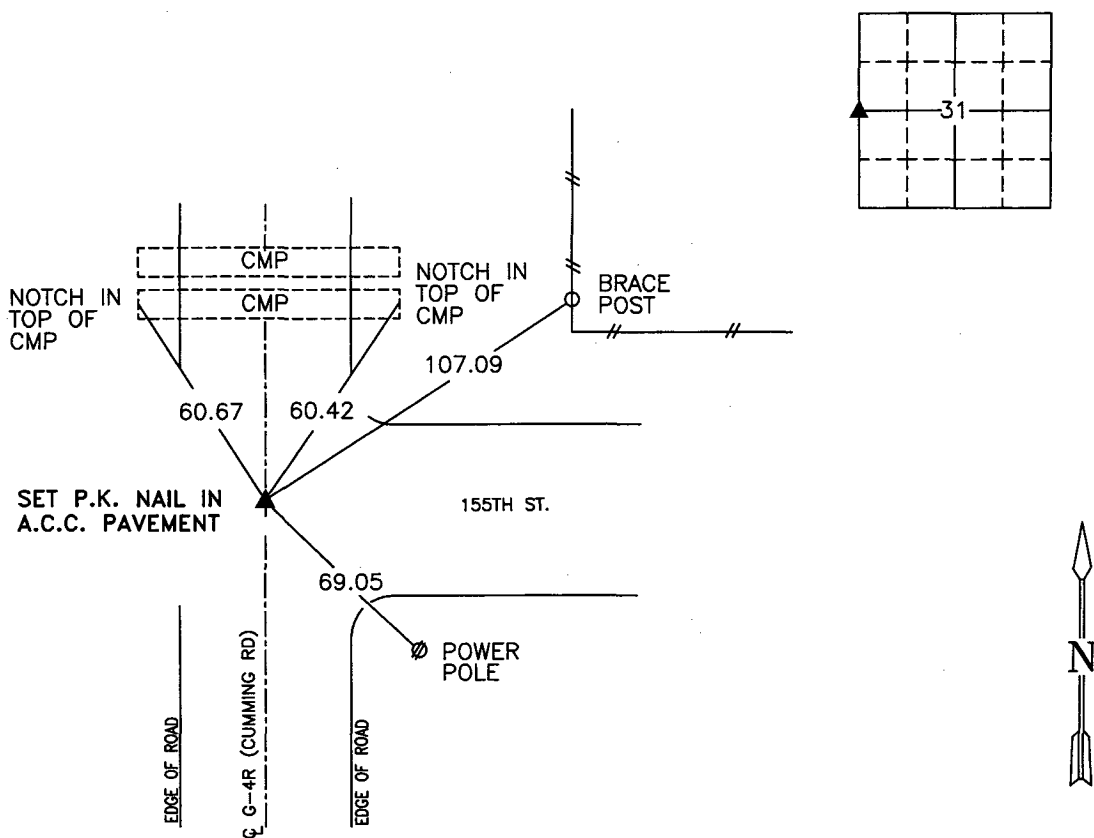
Land Survey Monuments situated in Section 31, Township 77 N, Range 26 W, of the Fifth Principal Meridian, Madison County, Iowa.
Previously recorded in Book 1, Page 55 in County Recorder's Office.
(book, page, document number, etc.)

(Show reason for preparing this certificate, the evidence and detailed procedures used in establishing the corner positions and monumentation found or placed.)

Monument Description and Remarks: Previous monument covered up during asphalt overlay. Set P.K. nail in A.C.C. pavement. Established the corner position by using previous ties and ties established during construction of the pavement. The tie information was gathered during the reconstruction of the Madison County paving project ESFM-C061(83)--5S-61

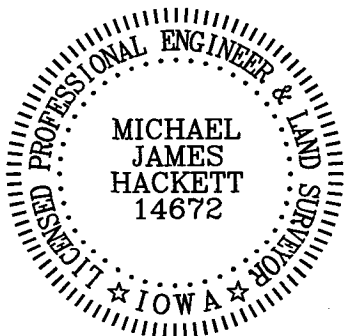
PLAN VIEW

(Show a minimum of three reference ties to durable physical objects, relevant monuments and physical conditions that will enable recovery of the corner.)



NW. COR., NW. 1/4, SW. 1/4, SEC. 31

NOTE: ALL TIES TO "X" NAILS UNLESS NOTED



I hereby certify that this land surveying document was prepared and the related survey work was performed by me or under my direct personal supervision and that I am a duly Licensed Land Surveyor under the laws of the State of Iowa.

Signed Michael James Hackett Date 9-2-2010
Michael James Hackett

Iowa license number 14672.
My license renewal date is 12/31/2010.
Pages covered by this seal: 1.

ESFM-C061(83)--5S-61
TIE6-10 X-1