



Document 2010 1922

Book 2010 Page 1922 Type 06 043 Pages 1
Date 8/18/2010 Time 10:21 AM
Rec Amt \$9.00

INDX ✓
ANNO ✓
SCAN ✓
CHEK ✓

LISA SMITH, COUNTY RECORDER
MADISON COUNTY IOWA

Daniels Land Surveying, 22598 18th Avenue, New Virginia, IA 50210, 641-449-3259

UNITED STATES PUBLIC LAND CORNER CERTIFICATE OF

Land Survey Monuments situated in Section 17, Township 74 N, Range 26 W, of the 5th P.M., Madison County, Iowa. Previously recorded in BOOK 2010 PAGE 1495 in County Recorders Office. (book, page, document number, etc.)

(Show reason for preparing this certificate, the evidence and detailed procedures used in establishing the corner positions and monumentation found or placed.)

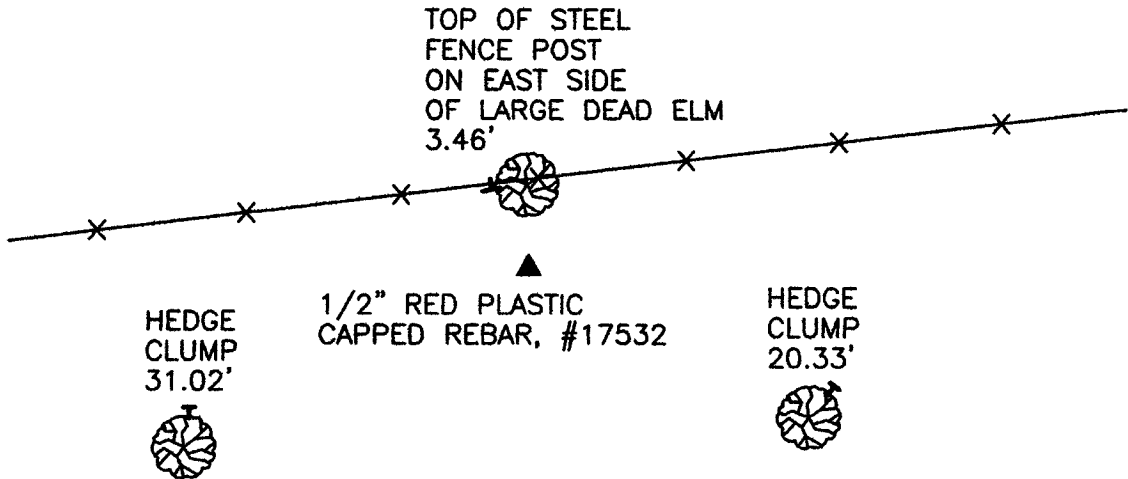
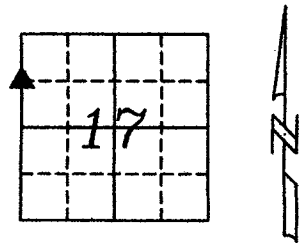
Monument Description and Remarks:

Set 1/2" x 24" red plastic capped rebar, #17532 midpoint and online between found NW Corner and W 1/4 Corner of Section. This certificate prepared to correct the County on the previously filed certificate.

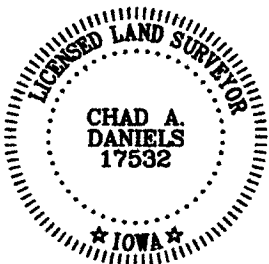
PLAN VIEW

(Show a minimum of three reference ties to durable physical objects, relevant monuments and physical conditions that will enable recovery of the corner.)

ALL TIES TO 30d SPIKES UNLESS NOTED



SW COR., NW 1/4, NW 1/4, SEC. 17



I hereby certify that this land surveying document was prepared and the related survey work was performed by me or under my direct personal supervision and that I am a duly licensed Land Surveyor under the laws of the State of Iowa.

Signature: Chad A. Daniels Date: 8/15/10
Chad A. Daniels

License number 17532
My license renewal date is December 31, 2010

245-01