

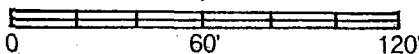
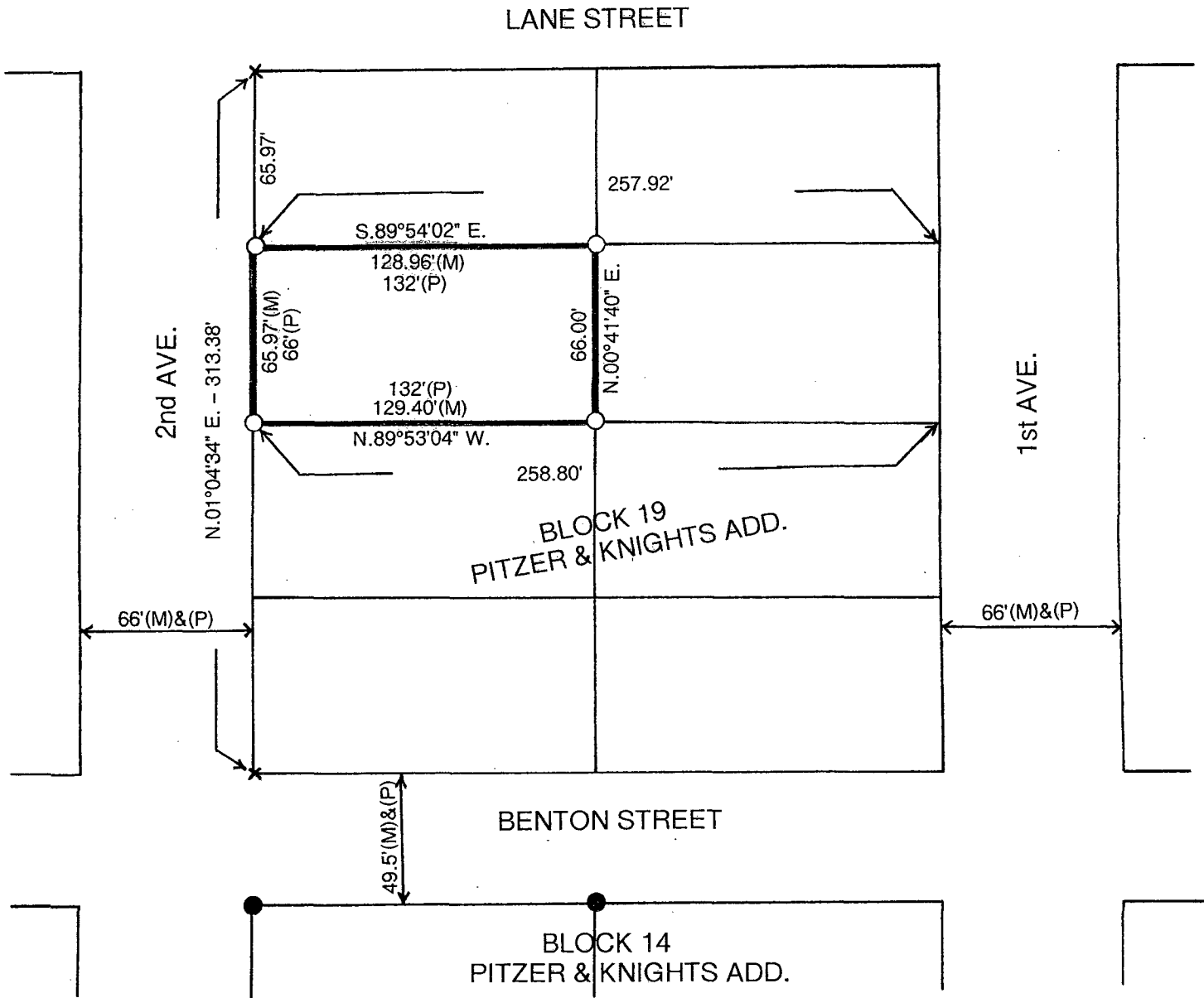


LISA SMITH, COUNTY RECORDER
MADISON COUNTY IOWA

VANCE & HOCHSTETLER, P.C. • CONSULTING ENGINEERS • WINTERSET, IOWA • 50273

CHARLES T. VANCE • 110 WEST GREEN ST., WINTERSET, IOWA • (515) 462-3995
JAMES M HOCHSTETLER • 110 WEST GREEN ST., WINTERSET, IOWA • FAX: (515) 462 9845

PLAT OF SURVEY OF NORTH 66 FEET OF SOUTH 198 FEET OF THE WEST
HALF OF BLOCK 19, PITZER & KNIGHT ADDITION TO THE CITY OF
WINTERSET, MADISON COUNTY, IOWA OWNED BY TED & JOAN JOHNSTON.



DATE OF SURVEY: 7-21-10

- CAPPED IRON ROD (CIR) #6808 SET
- CIR #6808 FOUND
- (M) MEASURED DISTANCE
- (P) PLATTED DISTANCE

I hereby certify that this land surveying document was prepared and the related survey work was performed by me or under my direct personal supervision and that I am a duly licensed Land Surveyor under the laws of the State of Iowa.

J.M. Hochstetler

J.M. HOCHSTETLER
License number 6808 Date 8/11/10
My license renewal date is December 31, 2011
Pages or sheets covered by this seal: 1