



Document 2010 1674

Book 2010 Page 1674 Type 06 043 Pages 1
Date 7/21/2010 Time 12:09 PM
Rec Amt \$9.00

INDX ✓
ANNO
SCAN
CHEK

LISA SMITH, COUNTY RECORDER
MADISON COUNTY IOWA

✓ PREPARED BY & RETURN TO MARK F. WANDRO, SNYDER & ASSOCIATES, INC. 2727 SW SNYDER ROAD, ANKENY, IOWA 50023 (515) 964-2020

UNITED STATES PUBLIC LAND SURVEY CORNER CERTIFICATE OF

Land Survey Monuments situated in Section 03, Township 77 N, Range 26 W, of the Fifth Principal Meridian, MADISON County, Iowa. Previously recorded in N/A in County Recorder's Office.
(book, page, document number, ect.)

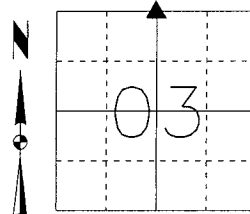
(Show reason for preparing this certificate, the evidence and detailed procedures used in establishing the corner positions and monumentation found or placed.)

Monument Description and Remarks:

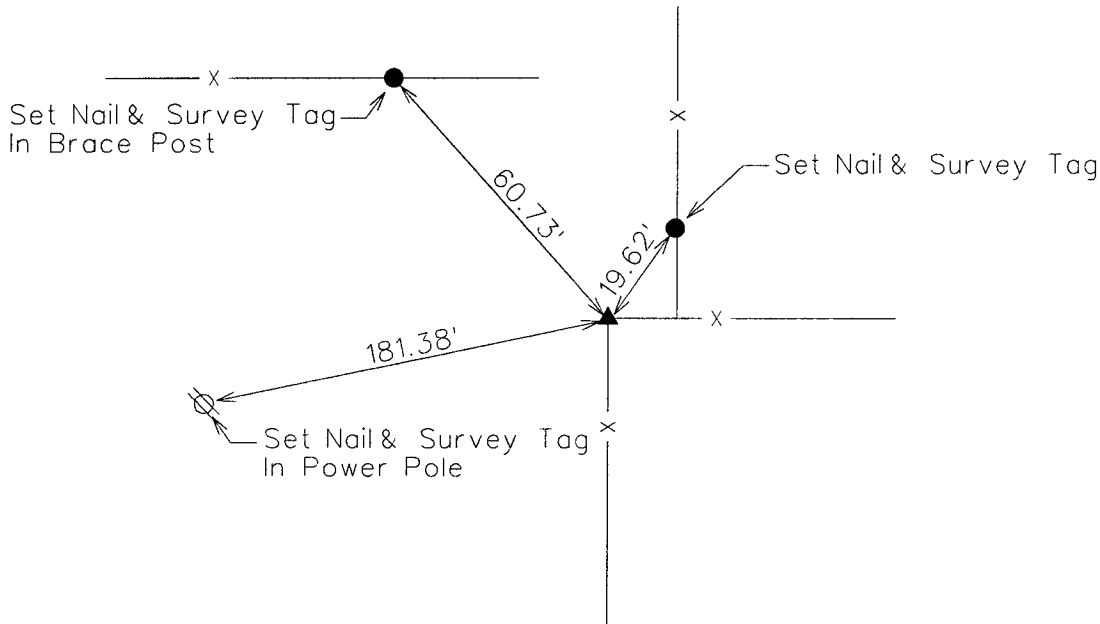
NORTH 1/4 CORNER OF SECTION 03-77-26.
NO RECORDED CORNER CERTIFICATE OR MADISON COUNTY ENGINEERS TIES WERE FOUND. SEARCHED AREA USING A METAL DETECTOR AND FOUND 1/2" REBAR. VARIFIED POSITION OF MONUMENT WITH SURROUNDING CORNERS AND PLAT OF SURVEY DATED 11/28/1894 IN BOOK 31, PAGE 89. ACCEPTED MONUMENT AS THE NORTH 1/4 CORNER.

Plan-View

(Show a minimum of three reference ties to durable physical objects, relevant monuments and physical conditions that will enable recovery of the corner.)



NORTH 1/4 CORNER
FOUND 1/2" REBAR



NOTE: ALL DISTANCES MEASURED HORIZONTAL UNLESS OTHERWISE NOTED.

S&A F8

JCC
6/28/2010
D:\Projects\3\77-26-03_N.dgn



I hereby certify that this land surveying document was prepared and the related survey work was performed by me or under my direct personal supervision and that I am a duly licensed Land Surveyor under the laws of the State of Iowa.
Mark F. Wandro 6/28/10
Mark F. Wandro, PLS Date
License Number 11465
My License Renewal Date is December 31, 2010
Pages or sheets covered by this seal:
SHEET 1 OF 1

List Corners to be Indexed

Corners	Section	Twp	Range
NORTH 1/4 CORNER	03	77	26
SOUTH 1/4 CORNER	34	78	26

TECH: JCC/EDG

PN: 03_77_26_N

DATE: 6/08/10