



Document 2010 1671

Book 2010 Page 1671 Type 06 043 Pages 1  
Date 7/21/2010 Time 12:07 PM  
Rec Amt \$9.00

INDX ✓  
ANNO  
SCAN  
CHEK

LISA SMITH, COUNTY RECORDER  
MADISON COUNTY IOWA

✓ PREPARED BY & RETURN TO MARK F. WANDRO, SNYDER & ASSOCIATES, INC. 2727 SW SNYDER ROAD, ANKENY, IOWA 50023 (515) 964-2020

### UNITED STATES PUBLIC LAND SURVEY CORNER CERTIFICATE OF

Land Survey Monuments situated in Section 03, Township 77 N, Range 26 W, of the Fifth Principal Meridian, MADISON, County, Iowa.  
Previously recorded in N/A in County Recorder's Office.

(book, page, document number, ect.)

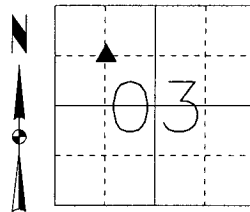
(Show reason for preparing this certificate, the evidence and detailed procedures used in establishing the corner positions and monumentation found or placed.)

#### Monument Description and Remarks:

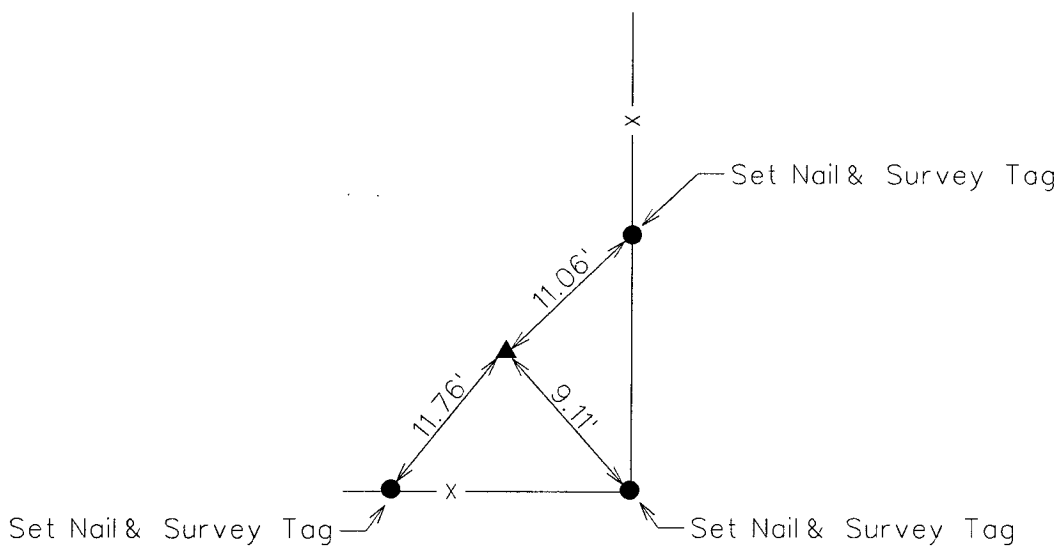
SE CORNER OF THE NORTHWEST 1/4 OF THE NORTHWEST 1/4 OF SECTION 03-77-26.  
NO RECORDED CORNER CERTIFICATE OR MADISON COUNTY ENGINEERS TIES WERE FOUND. SEARCHED AREA USING A METAL DETECTOR AND FOUND NOTHING. SET 1/2" REBAR YPC #11465 BY INTERSECTION OF PROPORTIONED CORNERS (NORTH/SOUTH-EAST/WEST).

#### Plan-View

(Show a minimum of three reference ties to durable physical objects, relevant monuments and physical conditions that will enable recovery of the corner.)



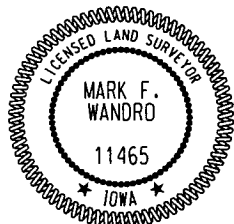
SE CORNER NW1/4 NW1/4  
SET 1/2" REBAR YPC #11465



JCC  
6/28/2010  
D:\Projects\3\77\_26\_03\_SE\_NWNW.dgn

NOTE: ALL DISTANCES MEASURED HORIZONTAL UNLESS OTHERWISE NOTED.

S&A C5



I hereby certify that this land surveying document was prepared and the related survey work was performed by me or under my direct personal supervision and that I am a duly licensed Land Surveyor under the laws of the State of Iowa.

*Mark F. Wandro*  
Mark F. Wandro, PLS Date

License Number 11465  
My License Renewal Date is December 31, 2010

Pages or sheets covered by this seal:  
SHEET 1 OF 1

#### List Corners to be Indexed

Corners	Section	Twp	Range
SE CORNER NW1/4 NW1/4	03	77	26
NE CORNER SW1/4 NW1/4	03	77	26
SW CORNER NE1/4 NE1/4	04	77	26
NW CORNER SE1/4 NE1/4	04	77	26

TECH: JCC/KG

PN: 03\_77\_26\_SE\_NWNW

DATE: 6/08/10