



Document 2010 1545

Book 2010 Page 1545 Type 06 026 Pages 1  
Date 7/07/2010 Time 2:30 PM  
Rec Amt \$7.00

INDX  
ANNO  
SCAN  
CHEK

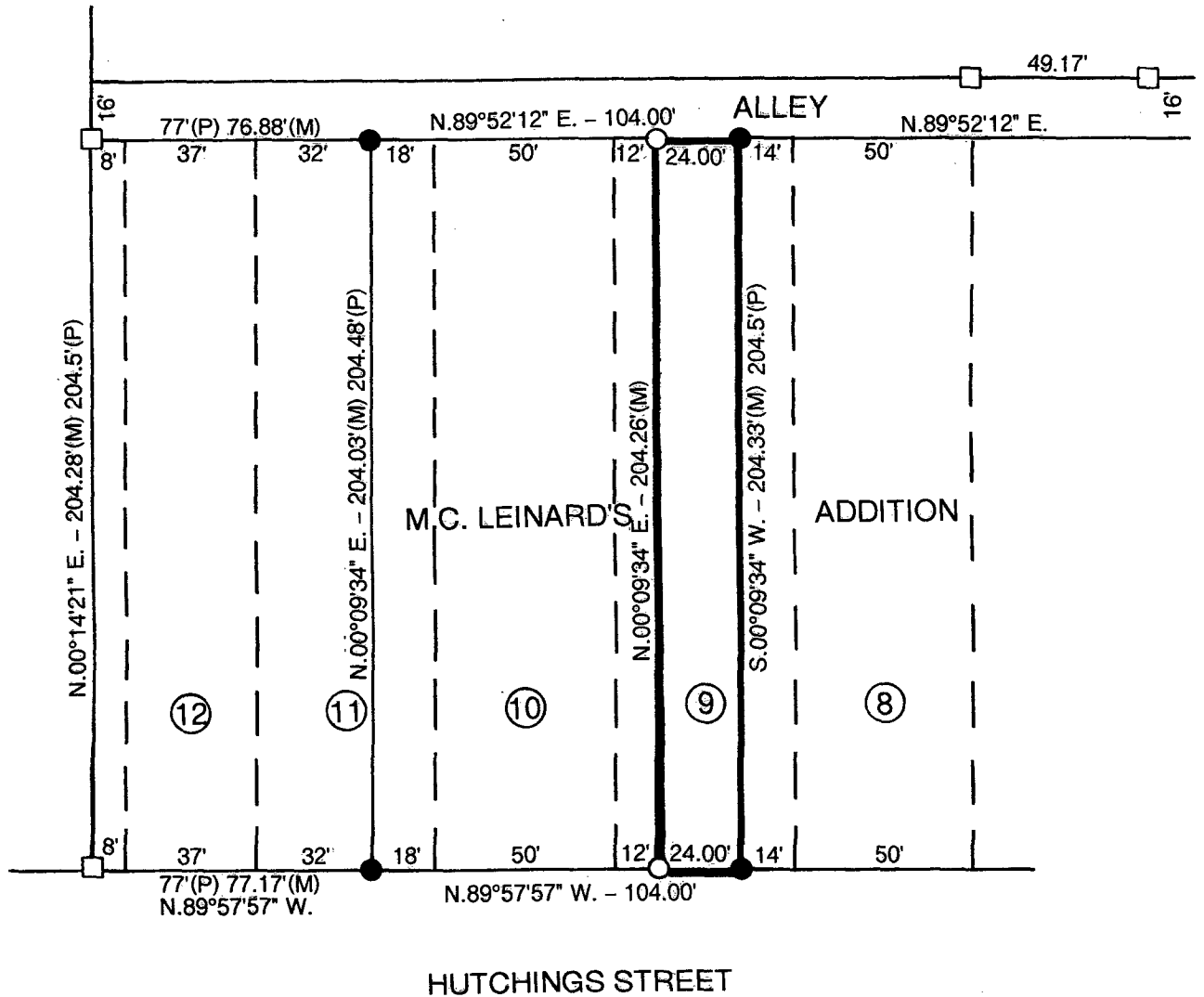
LISA SMITH, COUNTY RECORDER  
MADISON COUNTY IOWA

VANCE & HOCHSTETLER, P.C. CONSULTING ENGINEERS, WINTERSET, IOWA (515) 462-3995  
CHARLES T. VANCE, 110 WEST GREEN ST., WINTERSET, IOWA 50273-1533  
JAMES M HOCHSTETLER, 110 WEST GREEN ST., WINTERSET, IOWA 50273 - 1533

10-685

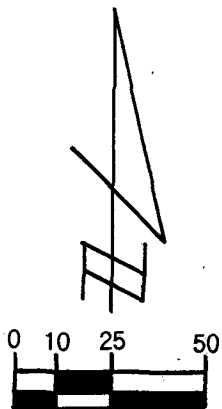
PLAT OF SURVEY FOR LANNY WENCK OF PART OF LOT 9 IN  
M.C. LEINARD'S ADDITION TO THE CITY OF WINTERSET,  
MADISON COUNTY, IOWA

OWNED BY: BARBARA WELSHER



LEGAL DESCRIPTION:

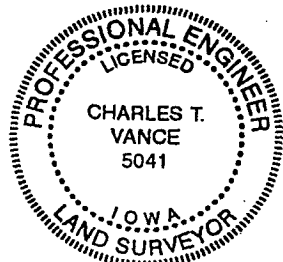
The East 24.00 feet of the West 36 feet of Lot 9 in M.C. Leinard's Addition to the City of Winterset, Madison County, Iowa and containing 4,903 Square Feet.



SCALE IN FEET  
DATE OF SURVEY:  
6-16-2010

LEGEND

- FOUND C.I.R. #6808
- FOUND C.I.R. #5041
- SET C.I.R. #5041
- (M) MEASURED DIMENSION
- (P) PLATTED DIMENSION



I hereby certify that this land surveying document was prepared and the related survey work was performed by me or under my direct personal supervision and that I am a duly Licensed Land Surveyor under the laws of the State of Iowa.

*Charles T. Vance* 22 June 2010  
Charles T. Vance, PE & PLS Date

License No. 5041

My License renewal date is 31, December 2011