



Document 2010 1544

Book 2010 Page 1544 Type 06 026 Pages 1  
Date 7/07/2010 Time 2:29 PM  
Rec Amt \$7.00

INDX ✓  
ANNO  
SCAN  
CHEK

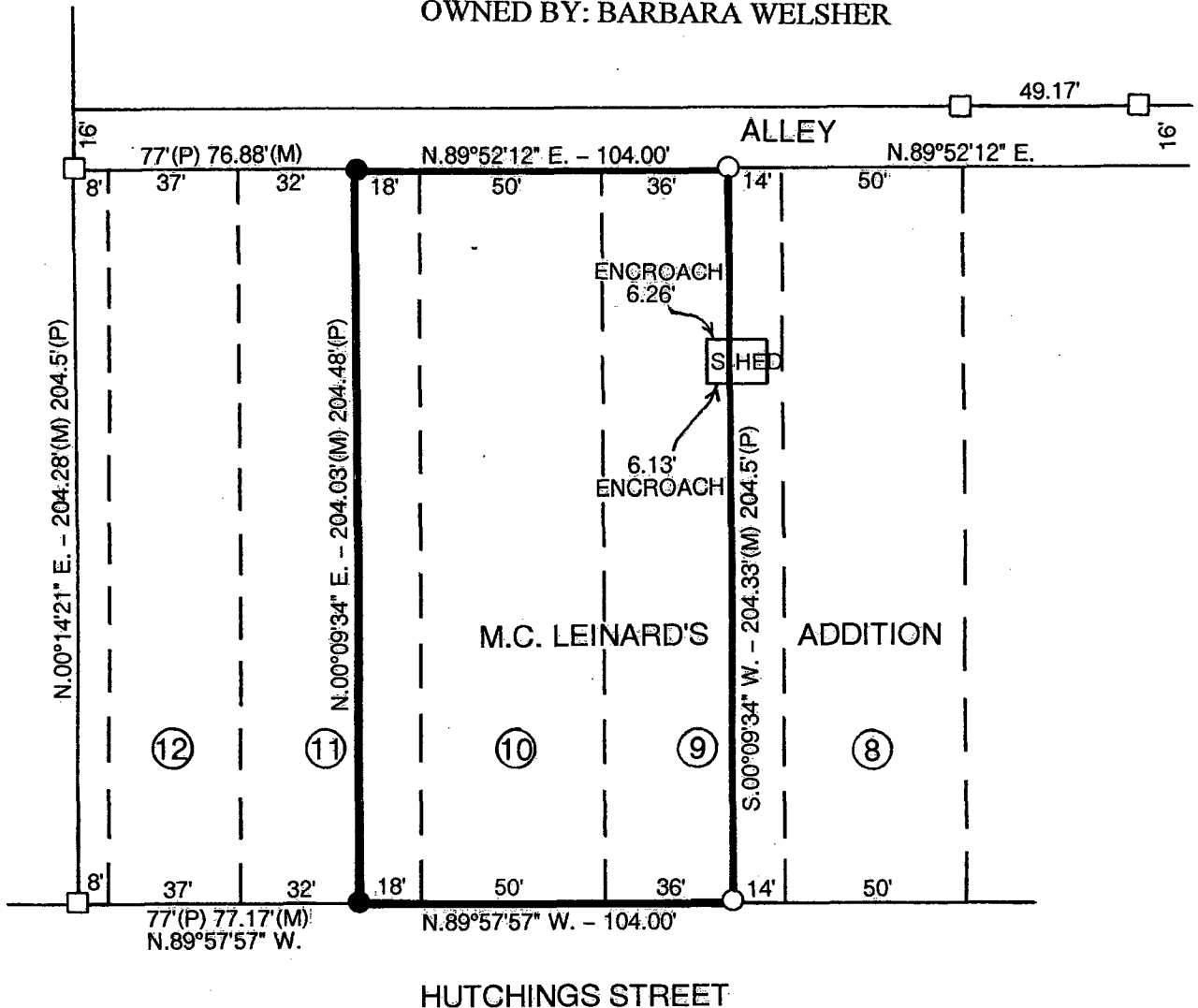
LISA SMITH, COUNTY RECORDER  
MADISON COUNTY IOWA

VANCE & HOCHSTETLER, P.C. CONSULTING ENGINEERS, WINTERSSET, IOWA (515) 462-3995  
CHARLES T. VANCE, 110 WEST GREEN ST., WINTERSSET, IOWA 50273-1533  
JAMES M HOCHSTETLER, 110 WEST GREEN ST., WINTERSSET, IOWA 50273 - 1533

10-64s

PLAT OF SURVEY FOR INFINITY FINANCIAL GROUP INC. OF LOT 10 AND  
PART OF LOTS 9 AND 11 IN M.C. LEINARD'S ADDITION TO THE  
CITY OF WINTERSSET, MADISON COUNTY, IOWA

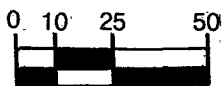
OWNED BY: BARBARA WELSHER



HUTCHINGS STREET

LEGAL DESCRIPTION:

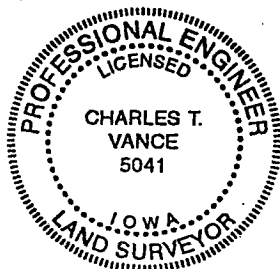
The West 36 feet of Lot 9, all of Lot 10 and  
the East 18 feet of Lot 11 in M.C. Leinard's  
Addition to the City of Winterset, Madison County,  
Iowa and containing 21,235 Square Feet.



SCALE IN FEET  
DATE OF SURVEY:  
6-15-2010

LEGEND

- FOUND C.I.R. #6808
- FOUND C.I.R. #5041
- SET C.I.R. #5041
- (M) MEASURED DIMENSION
- (P) PLATTED DIMENSION



I hereby certify that this land surveying document was prepared and  
the related survey work was performed by me or under my direct  
personal supervision and that I am a duly Licensed Land Surveyor  
under the laws of the State of Iowa.

*Charles T. Vance* 22 June 2010  
Charles T. Vance, PE & PLS Date

License No. 5041

My License renewal date is 31, December 2011