



Document 2010 1495

Book 2010 Page 1495 Type 06 043 Pages 1  
Date 7/01/2010 Time 10:57 AM  
Rec Amt \$9.00

INDX ✓  
ANNO  
SCAN  
CHEK

LISA SMITH, COUNTY RECORDER  
MADISON COUNTY IOWA

Daniels Land Surveying, 22598 18th Avenue, New Virginia, IA 50210, 641-449-3259

# UNITED STATES PUBLIC LAND CORNER CERTIFICATE OF

Land Survey Monuments situated in Section 17, Township 74 N, Range 26 W, of the  
5th P.M., Warren County, Iowa. Previously recorded in n.a.  
in County Recorders Office. (book, page, document number, etc.)

(Show reason for preparing this certificate, the evidence and detailed procedures used in  
establishing the corner positions and monumentation found or placed.)

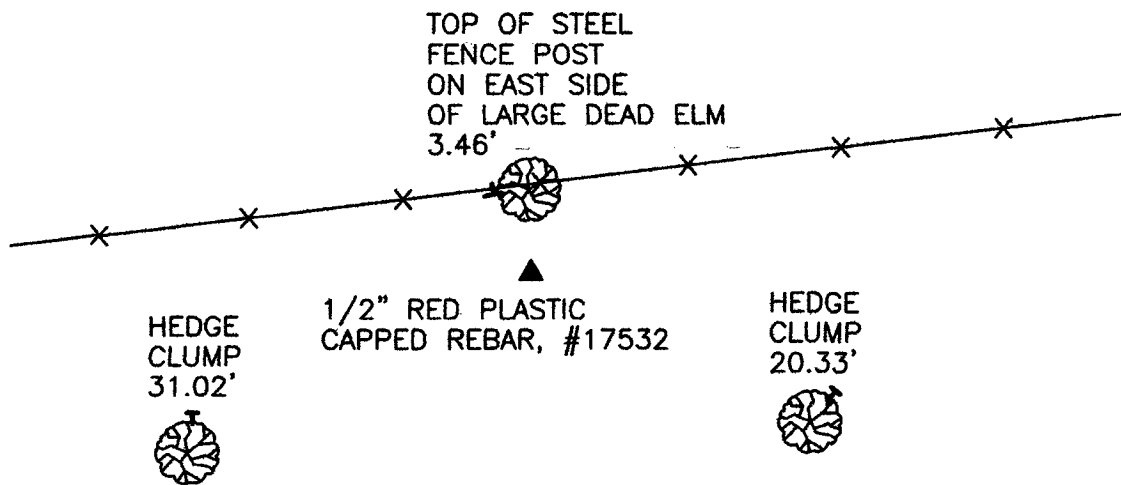
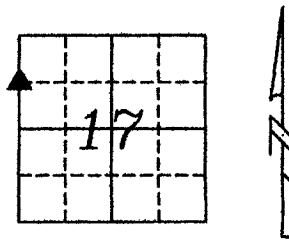
### Monument Description and Remarks:

Set 1/2" x 24" red plastic capped rebar, #17532 midpoint and online between found  
NW Corner and W 1/4 Corner of Section.

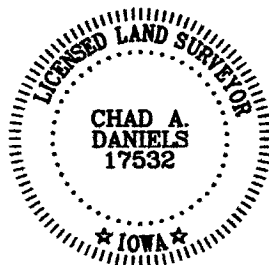
## PLAN VIEW

(Show a minimum of three reference ties to durable physical objects, relevant monuments  
and physical conditions that will enable recovery of the corner.)

ALL TIES TO 30d SPIKES UNLESS NOTED



SW COR., NW 1/4, NW 1/4, SEC. 17



I hereby certify that this land surveying document was prepared and the  
related survey work was performed by me or under my direct personal  
supervision and that I am a duly licensed Land Surveyor under the laws  
of the State of Iowa.

Signature: Chad A. Daniels Date: 6/22/10

License number 17532  
My license renewal date is December 31, 2010

245-01