



Document 2010 975

Book 2010 Page 975 Type 06 026 Pages 1  
Date 4/30/2010 Time 4:06 PM  
Rec Amt \$7.00

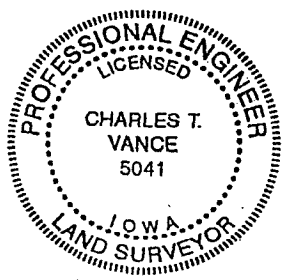
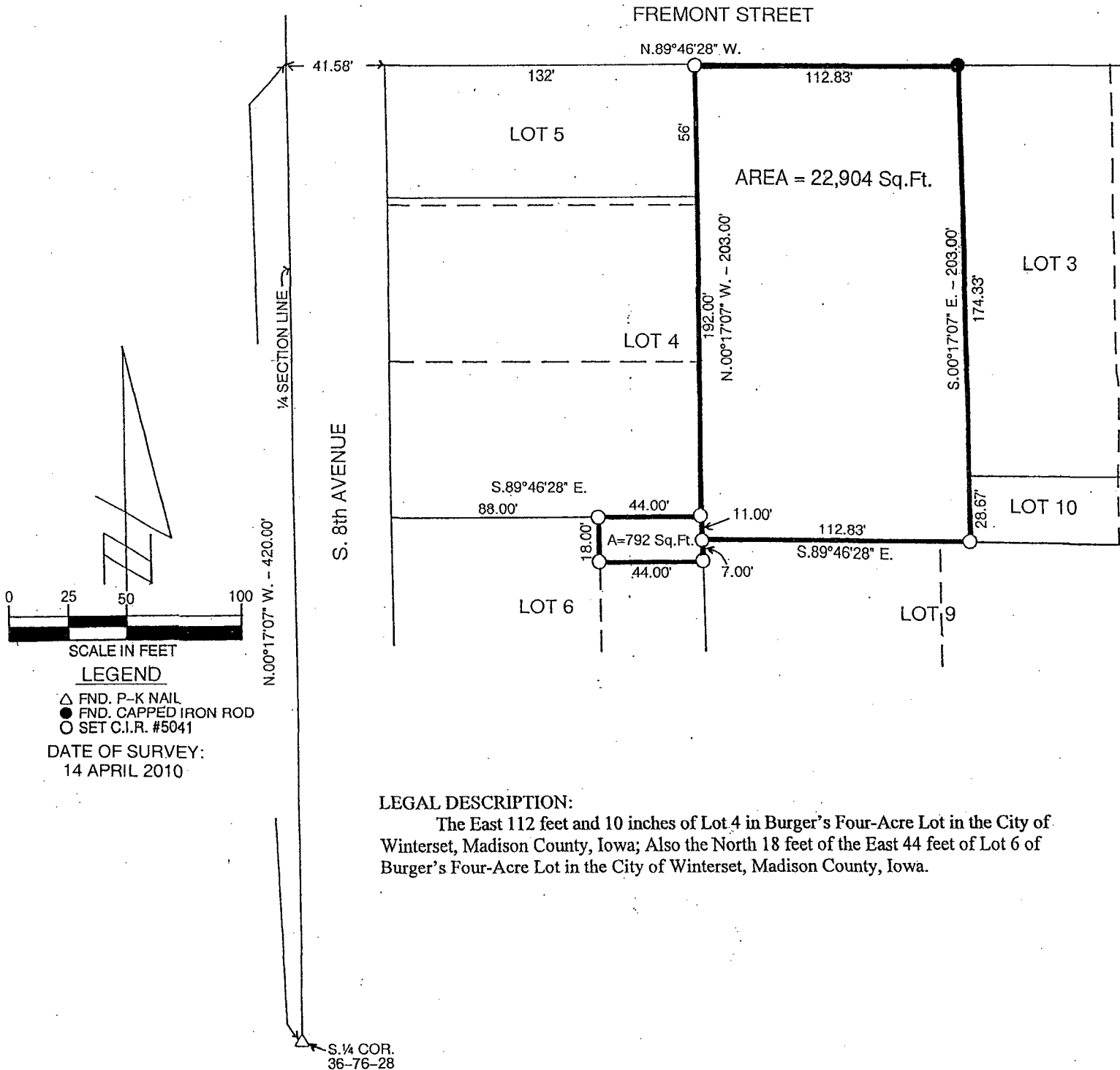
INDX  
ANNO  
SCAN  
CHEK

LISA SMITH, COUNTY RECORDER  
MADISON COUNTY IOWA

VANCE & HOCHSTETLER, P.C. CONSULTING ENGINEERS, WINTERSET, IOWA (515) 462-3995  
CHARLES T. VANCE, 110 WEST GREEN ST., WINTERSET, IOWA 50273-1533  
JAMES M HOCHSTETLER, 110 WEST GREEN ST., WINTERSET, IOWA 50273 - 1533

### PLAT OF SURVEY IN LOT 4 AND IN LOT 6 OF BURGER'S FOUR-ACRE LOT, CITY OF WINTERSET, MADISON COUNTY, IOWA.

OWNED BY: CHRISTOPHER & JENNIFER SHILHANEK



I hereby certify that this land surveying document was prepared and the related survey work was performed by me or under my direct personal supervision and that I am a duly Licensed Land Surveyor under the laws of the State of Iowa.

*Charles T. Vance* 21 April 2010  
Charles T. Vance, PE & PLS Date

License No. 5041

My License renewal date is 31, December 2011