



Document 2010 974

Book 2010 Page 974 Type 06 026 Pages 1
Date 4/30/2010 Time 4:04 PM
Rec Amt \$7.00

INDX
ANNO
SCAN
CHEK

LISA SMITH, COUNTY RECORDER
MADISON COUNTY IOWA

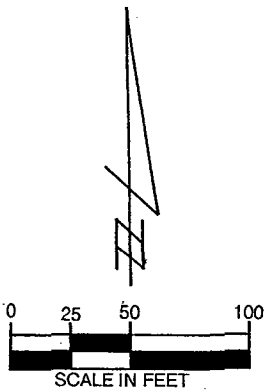
VANCE & HOCHSTETLER, P.C. CONSULTING ENGINEERS, WINTERSET, IOWA (515) 462-3995

CHARLES T. VANCE, 110 WEST GREEN ST., WINTERSET, IOWA 50273-1533

JAMES M HOCHSTETLER, 110 WEST GREEN ST., WINTERSET, IOWA 50273 - 1533

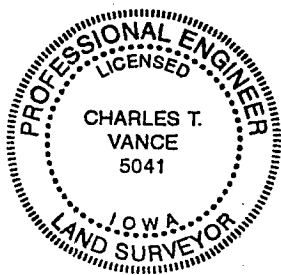
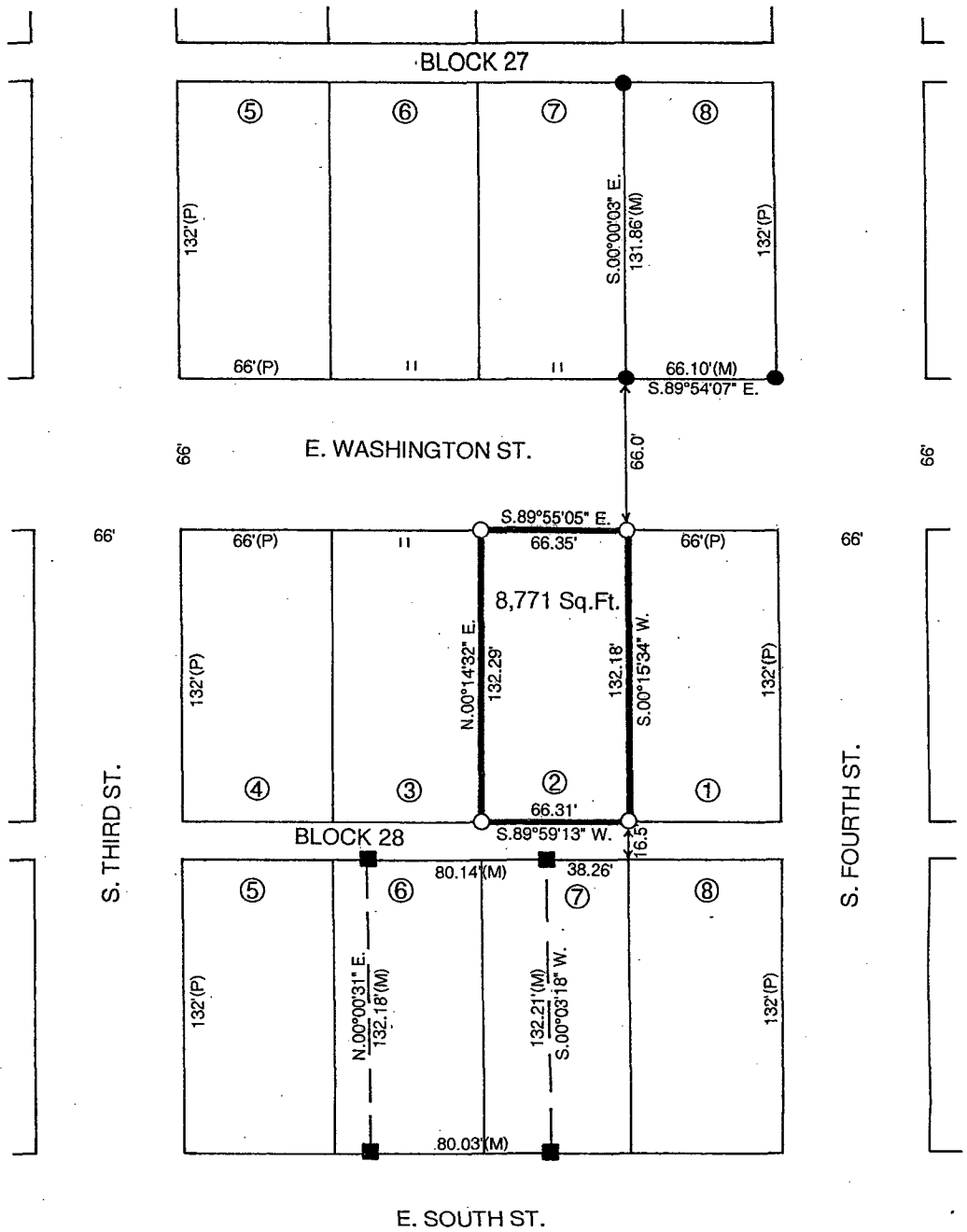
PLAT OF SURVEY OF LOT 2, BLOCK 28, ORIGINAL TOWN
OF WINTERSET, MADISON COUNTY, IOWA.

OWNED BY: KEITH & APRIL KIRKSEY.



LEGEND
○ SET C.I.R. #5041
■ FND. C.I.R. #13427
● FND. C.I.R. #5041
(M) MEASURED DIMENSION
(P) PLATTED DIMENSION

DATE OF SURVEY:
15 APRIL 2010



I hereby certify that this land surveying document was prepared and the related survey work was performed by me or under my direct personal supervision and that I am a duly Licensed Land Surveyor under the laws of the State of Iowa.

Charles T. Vance 22 April 2010
Charles T. Vance, PE & PLS Date

License No. 5041

My License renewal date is 31, December 2011