



Document 2010 866

Book 2010 Page 866 Type 06 043 Pages 1  
Date 4/20/2010 Time 3:55 PM  
Rec Amt \$9.00

INDX ✓  
ANNO  
SCAN  
CHEK

LISA SMITH, COUNTY RECORDER  
MADISON COUNTY IOWA

VANCE & HOCHSTETLER, P.C. CONSULTING ENGINEERS, WINTERSET, IOWA (515)462-3995

CHARLES T. VANCE, 110 WEST GREEN ST., WINTERSET, IOWA 50273  
JAMES M. HOCHSTETLER, 110 WEST GREEN ST., WINTERSET, IOWA 50273

UNITED STATES PUBLIC LAND SURVEY CORNER CERTIFICATE

OF

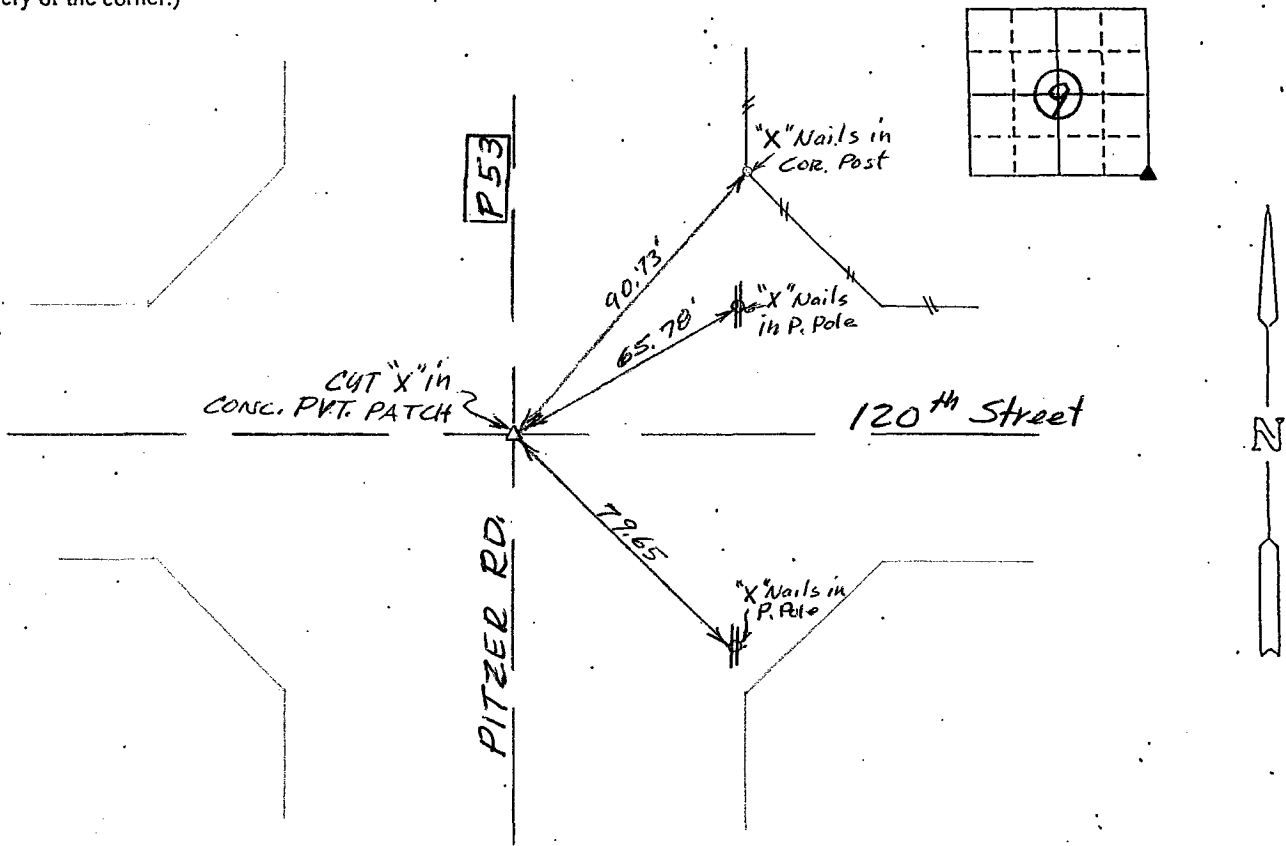
Land Survey Monuments situated in Section 9, Township 77 North, Range 29 West, of the Fifth Principal Meridian, Madison County, Iowa.  
Previously recorded in Corner Certificate Book 1 Page 225 in County Recorder's Office.  
(book, page, document number, etc.)

(Show reason for preparing this certificate, the evidence and detailed procedures used in establishing the corner positions and monumentation found or placed.)

Monument Description and Remarks: Cut "X" in P.C. Concrete Patch from ref. ties on recorded corner certificate.

PLAN - VIEW

(Show a minimum of three reference ties to durable physical objects, relevant monuments and physical conditions that will enable recovery of the corner.)



Ref. to SE. COR. section 9, T77N, R29W



I hereby certify that this land surveying document was prepared and the related survey work was performed by me or under my direct personal supervision and that I am a duly Licensed Land Surveyor under the laws of the State of Iowa.

Charles T. Vance 1 April 2010  
Charles T. Vance, PE & PLS Date

License No. 5041

My License renewal date is 31, December 2011

List Corners to be Indexed  
Corners Section Twp Range

SE, COR. 9 - 77 - 29