



INDX
ANNO
SCAN
CHEK

LISA SMITH, COUNTY RECORDER
MADISON COUNTY IOWA

Prepared By: Warren R. Headlee Lamp, Rynearson & Associates, Inc. 14710 West Dodge Road, Suite 100 Omaha, Nebraska 68154-2027 (Ph) 402.496.2498

UNITED STATES PUBLIC LAND SURVEY CORNER CERTIFICATE

Land survey monuments situated in Section 2, Township 77 North, Range 27 West, of the Fifth Principal Meridian, Madison County, Iowa. Previously recorded in the County Recorder's Office as indicated in remarks.

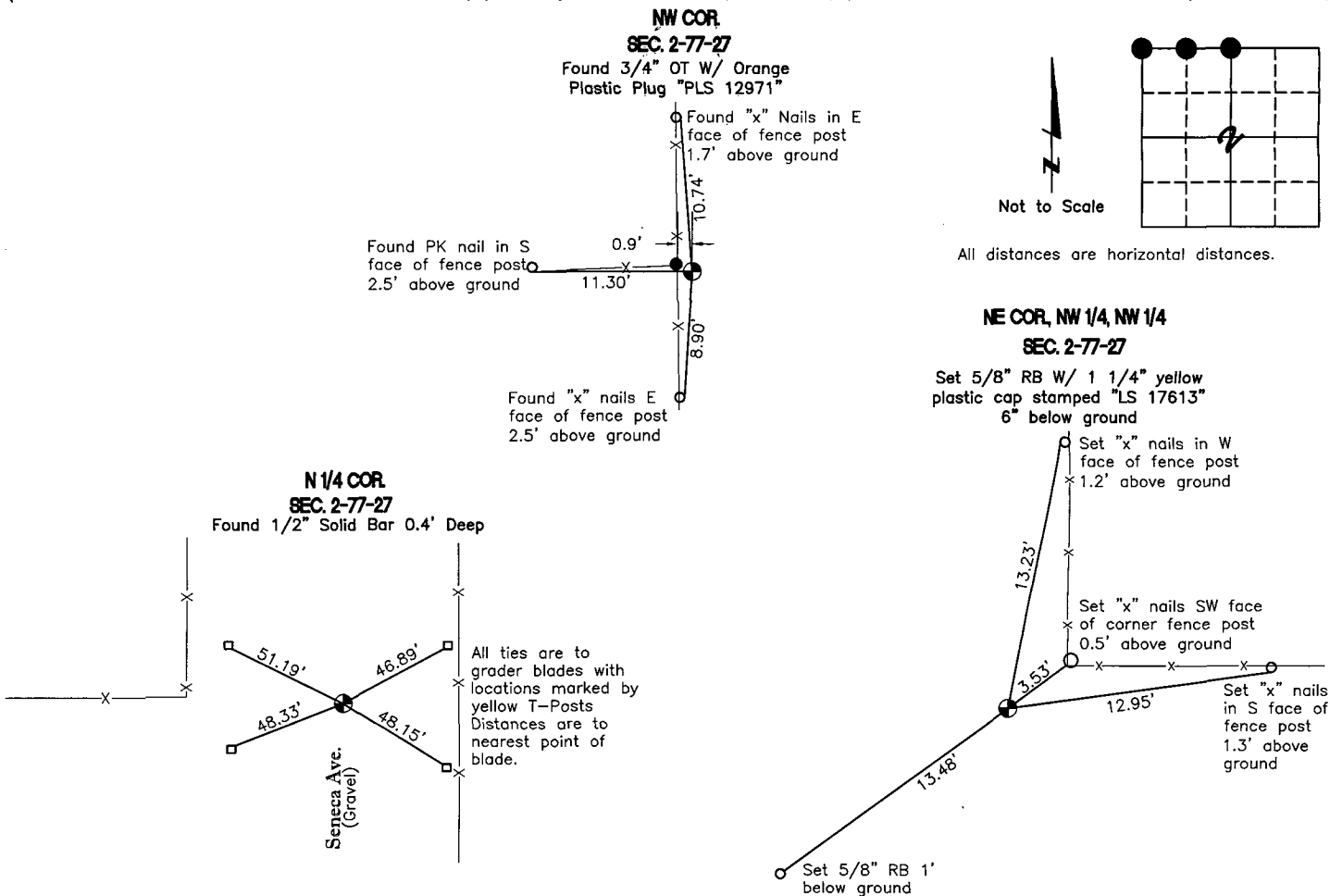
(Show reason for preparing this certificate, the evidence and detailed procedures used in establishing the corner positions & monumentation found or placed.)

MONUMENT DESCRIPTION AND REMARK:

- NW Cor, - Found 3/4" OT w/ orange plastic plug stamped PLS 12971. No previous records found.
- NE Cor, NW 1/4, NW 1/4 - Set 5/8" RB w/ 1 1/4" yellow plastic cap stamped 17613 at the point midway between the NW corner of section and the N 1/4 corner of section. No previous records found.
- N 1/4 - Found 1/2" solid bar, previously recorded in BK 2000, PG 11236, Dallas County Recorder's Office.

PLAN - VIEW

(Show a minimum of three reference ties to durable physical objects, relevant monuments and physical conditions that will enable recovery of the corner.)



Corners to be Indexed

- NW Cor., Sec. 2, T77N, R27W
- NE Cor., NW 1/4, NW 1/4, Sec. 2, T77N, R27W
- N 1/4 Cor., Sec. 2, T77N, R27W

I hereby certify that this land surveying document was prepared and the related survey work was performed by me or under my direct personal supervision and that I am a duly licensed Land Surveyor under the laws of the State of Iowa.

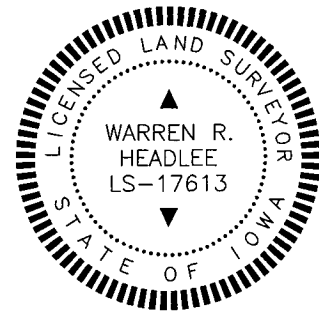
Warren R. Headlee 3-9-10
Land Surveyor Date

Printed or typed name: Warren R. Headlee

License number: 17613

My license renewal date is December 31, 2010

Sheets covered by this seal: 1



Lamp, Rynearson & Associates, Inc.

WWW.LRA-INC.COM

14710 West Dodge Road, Suite 100
Omaha, Nebraska 68154-2027

(Ph) 402.496.2498
(Fax) 402.496.2730

drawn by: SGT
surveyor: WRH
job number-tasks: M101001
date: 02/01/2010.
book: 10-1 page: 2-7 8-10
file name: 101001CT2.dwg