



Document 2010 61  
 Book 2010 Page 61 Type 06 043 Pages 1  
 Date 1/08/2010 Time 12:43 PM  
 Rec Amt \$9.00

INDX -  
 ANNO -  
 SCAN  
 CHECK

LISA SMITH, COUNTY RECORDER  
 MADISON COUNTY IOWA

VANCE & HOCHSTETLER, P.C., CONSULTING ENGINEERS, WINTERSSET, IOWA (515) 462-3995  
 CHARLES T. VANCE, 110 West Green St., Winterset, Iowa, 50273  
 JAMES M HOCHSTETLER, 110 West Green St., Winterset, Iowa 50273

09-1085

UNITED STATES PUBLIC LAND SURVEY CORNER CERTIFICATE

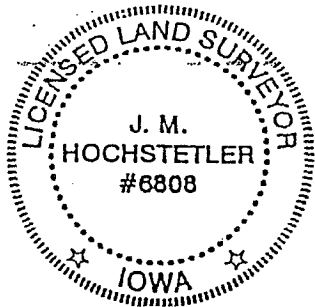
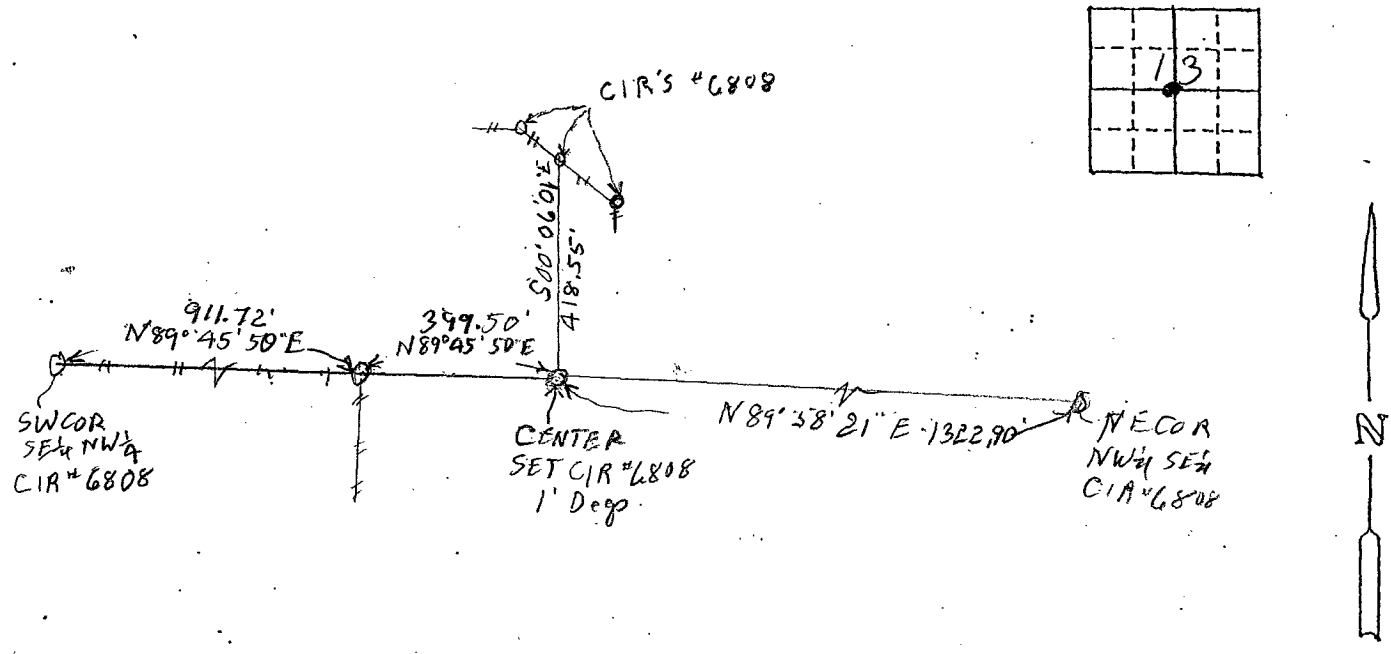
Land Survey Monuments situated in Section 13 OF 76 N Township, Range 29 W, of the Fifth Principal Meridian, MADISON County, Iowa.  
 Previously recorded in \_\_\_\_\_ in County Recorder's Office.  
 (book, page, document number, etc.)

(Show reason for preparing this certificate, the evidence and detailed procedures used in establishing the the corner positions and monumentation found or placed.)

Monument Description and Remarks: Center - Set yellow CIR # 6808 in a cultivated field approximately 1' deep. Set at intersection of lines from found NW, SE & E Corners and calculated NW Cor. based on found NW & SW Corners and old property line fence along the South line of the SE 1/4 NW 1/4.  
SEE PLAT OF SURVEY - BOOK 2009 PAGE 3678

PLAN - VIEW

(Show a minimum of three reference ties to durable physical objects, relevant monuments and physical conditions that will enable recovery of the corner.)



I hereby certify that this land surveying document was prepared and the related survey work was performed by me or under my direct personal supervision and that I am a duly licensed Land Surveyor under the laws of the State of Iowa.  
J.M. Hochstetler  
 J.M. HOCHSTETLER  
 License number 6808 Date 12/4/09  
 My license renewal date is December 31 2009  
 Pages or sheets covered by this seal: 1

List Corners to be Indexed

Corners	Section	Twp	Range
CENTER	13	76N	29W