



Document 2010 21

Book 2010 Page 21 Type 06 043 Pages 1

Date 1/05/2010 Time 10:57 AM

Rec Amt \$9.00

INDX ✓
ANNO ✓
SCAN ✓
CHEK

LISA SMITH, COUNTY RECORDER
MADISON COUNTY IOWA

UNITED STATES PUBLIC LAND SURVEY CORNER CERTIFICATE of

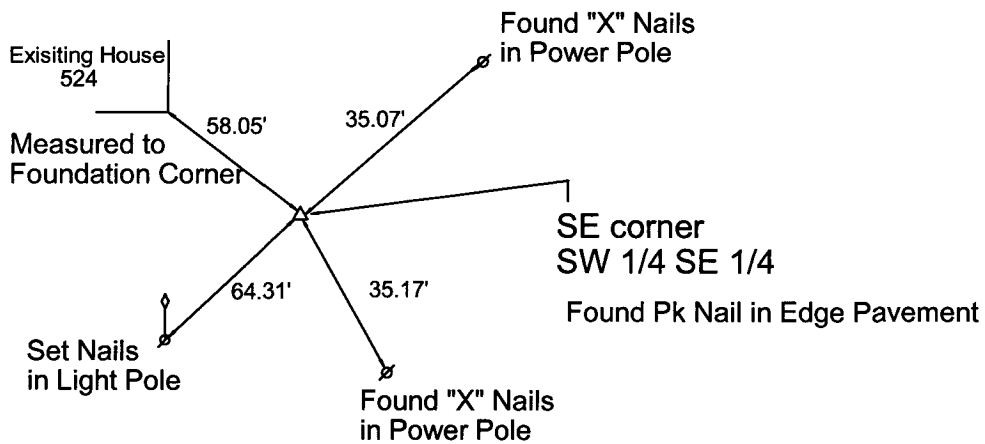
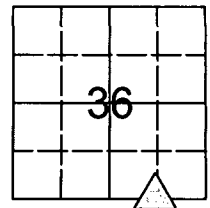
LAND SURVEY MONUMENTS SITUATED IN SECTION 36, TOWNSHIP 76 N, RANGE 28 W, of the Fifth Principal Meridian, Madison County, Iowa. Previously recorded in Book N/A on Page N/A in the office of the County Recorder.

Monument Description & Remarks:

Found PK nail in pavement. Traversed the South Quarter Corner of the Section to verify location. Accepted position. The reason for preparing this certificate is that there are no previously recorded corner certificates for the corners referenced in Book 2 Page 168 and Book 2 page 408 in the Madison County Recorder's Office.

PLAN VIEW

Section 36-T76N-R28W



I HEREBY CERTIFY THAT THIS LAND SURVEYING DOCUMENT WAS PREPARED AND THE RELATED WORK WAS PERFORMED BY ME OR UNDER MY DIRECT PERSONAL SUPERVISION AND THAT I AM A DULY LICENSED PROFESSIONAL LAND SURVEYOR UNDER THE LAWS OF THE STATE OF IOWA.

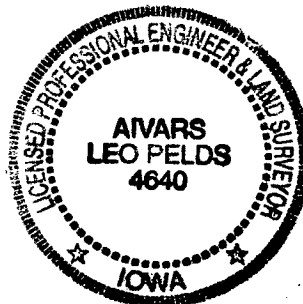
A. Leo Pelds

12-16-09

AIVARS LEO PELDS, P.E. & L.S. IA. LIC. NO. 4640 DATE

MY LICENSE RENEWAL DATE IS DECEMBER 31, 2009

ADDITIONAL PAGES OR SHEETS COVERED BY THIS SEAL (NONE UNLESS INDICATED HERE):



Corner	Section	Twp	Range
SE Corner	36	76	28
SW 1/4 SE 1/4			