

INDEX ✓  
ANNO ✓  
SCAN  
CHEK

LISA SMITH, COUNTY RECORDER  
MADISON IOWA

Prepared By: Michael James Hackett, Madison County Engineer's Office, 1105 E. Court Ave., Winterset, Ia. 50273, Tel. (515) 462-1136

# UNITED STATES PUBLIC LAND SURVEY CORNER CERTIFICATE OF

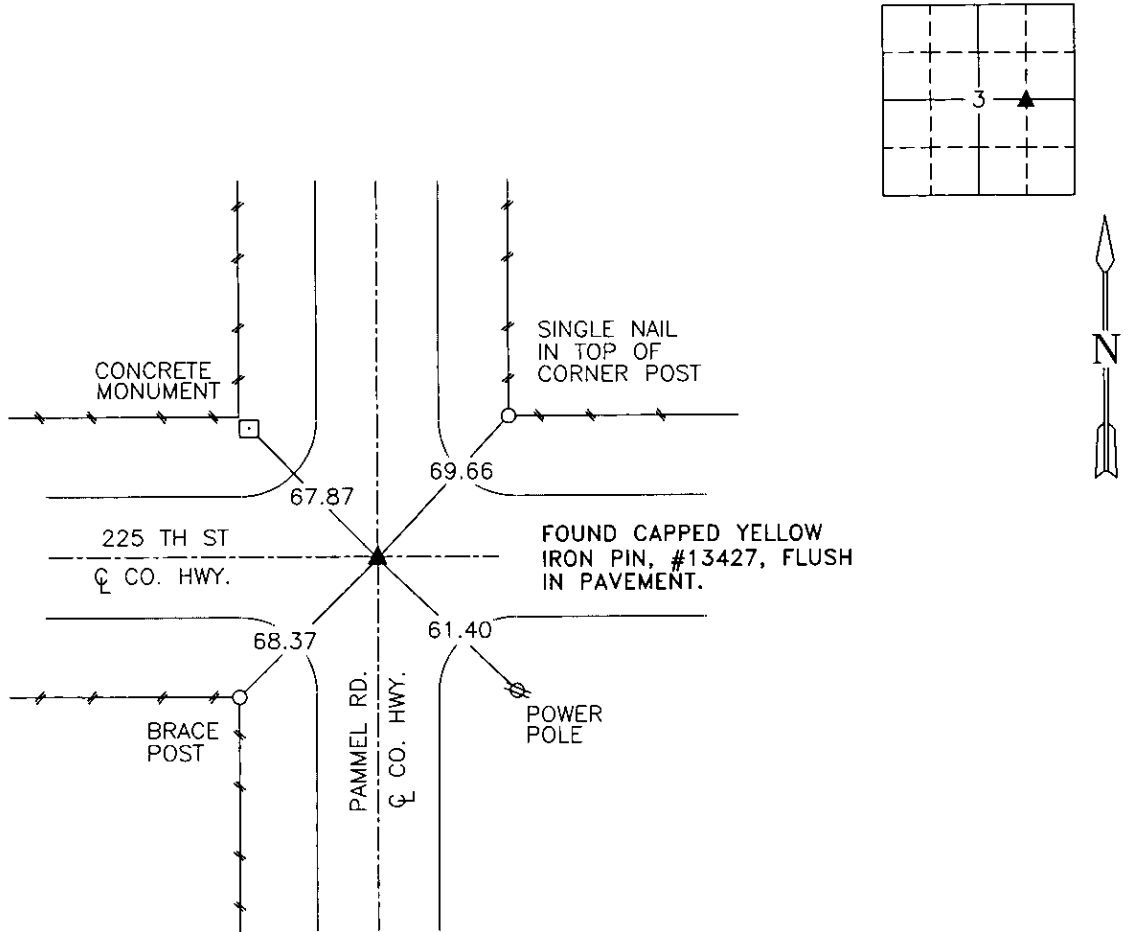
Land Survey Monuments situated in Section 3, Township 75 N, Range 28 W, of the Fifth Principal Meridian, Madison County, Iowa.  
Previously recorded in Book 2002, Page 484 in County Recorder's Office. (book, page, document number, etc.)

(Show reason for preparing this certificate, the evidence and detailed procedures used in establishing the corner positions and monumentation found or placed.)

Monument Description and Remarks: Found capped yellow iron pin, #13427, flush in pavement. This tie information was gathered and checked before Madison County highway maintenance project FM-C061(77)55-61. Retied corner with current distances and tie monuments. Accepted position.

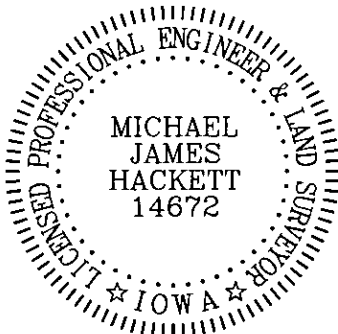
## PLAN VIEW

(Show a minimum of three reference ties to durable physical objects, relevant monuments and physical conditions that will enable recovery of the corner.)



SW. COR., SE. 1/4, NE. 1/4, SEC. 3

NOTE: ALL TIES TO "X" NAILS UNLESS NOTED



I hereby certify that this land surveying document was prepared and the related survey work was performed by me or under my direct personal supervision and that I am a duly Licensed Land Surveyor under the laws of the State of Iowa.

Signed Michael James Hackett Date 9-20-2007  
Michael James Hackett

Iowa license number 14672.  
My license renewal date is 12/31/2008.  
Pages covered by this seal: 1.