

INDX ✓
ANNO ✓
SCAN
CHEK

LISA SMITH, COUNTY RECORDER
MADISON IOWA

Prepared By: Michael James Hackett, Madison County Engineer's Office, 1105 E. Court Ave., Winterset, Ia. 50273, Tel. (515) 462-1136

UNITED STATES PUBLIC LAND SURVEY CORNER CERTIFICATE OF

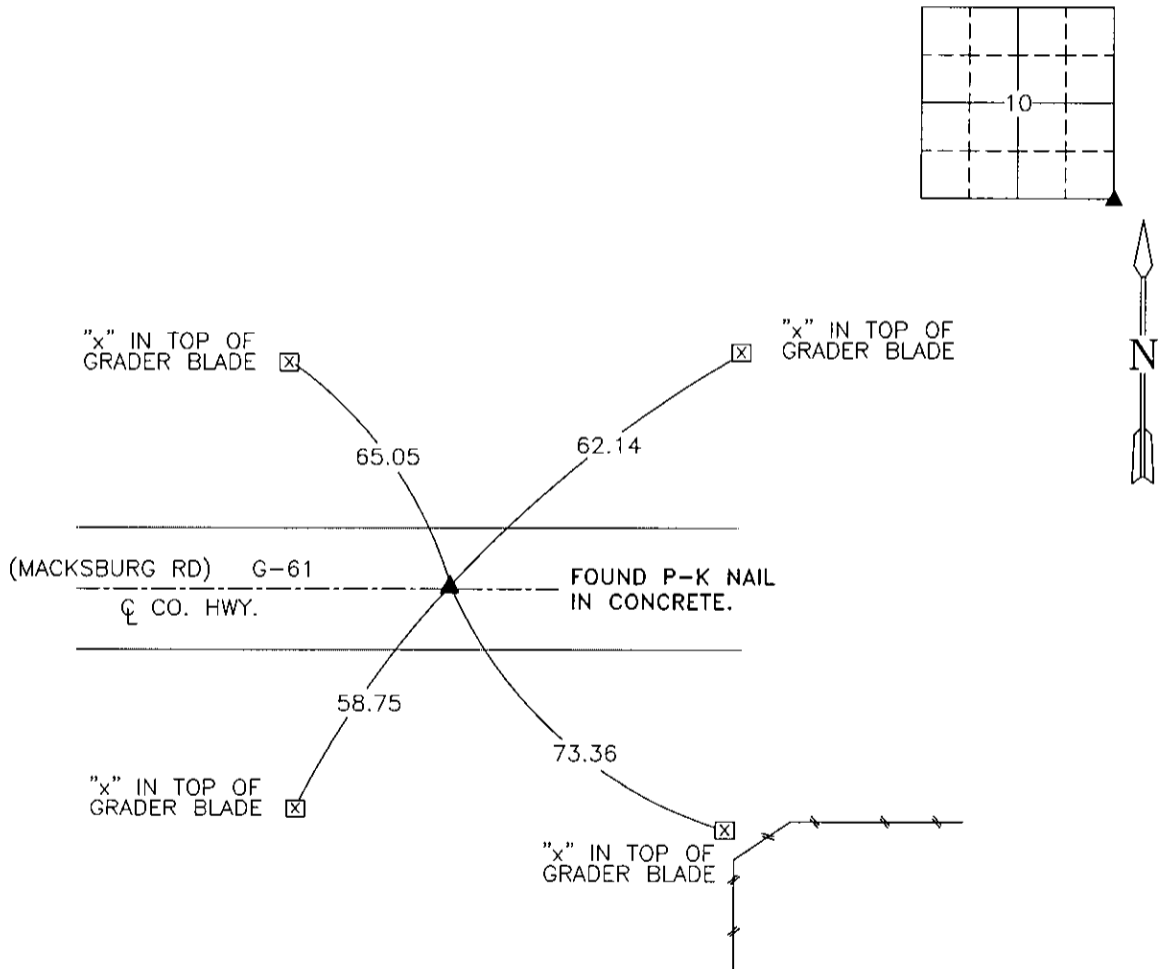
Land Survey Monuments situated in Section 10, Township 74 N, Range 29 W, of the Fifth Principal Meridian, Madison County, Iowa.
Previously recorded in Book 1, Page 586 in County Recorder's Office. (book, page, document number, etc.)

(Show reason for preparing this certificate, the evidence and detailed procedures used in establishing the corner positions and monumentation found or placed.)

Monument Description and Remarks: Found P-K nail in concrete. The existing tie information was checked before Madison County highway maintenance project FM-C061(77)55-61. The existing tie distances were found to be ok. Accepted position.

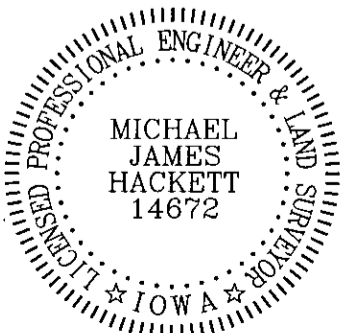
PLAN VIEW

(Show a minimum of three reference ties to durable physical objects, relevant monuments and physical conditions that will enable recovery of the corner.)



SE. COR., SE. 1/4, SEC. 10

NOTE: ALL TIES TO "X" NAILS UNLESS NOTED



I hereby certify that this land surveying document was prepared and the related survey work was performed by me or under my direct personal supervision and that I am a duly Licensed Land Surveyor under the laws of the State of Iowa.

Signed [Signature] Date 9-14-2007
Michael James Hackett

Iowa license number 14672.
My license renewal date is 12/31/2008.
Pages covered by this seal: 1.