

INDX ✓  
ANNO  
SCAN  
CHEK

LISA SMITH, COUNTY RECORDER  
MADISON IOWA

PREPARED BY PATRICK SHEPARD: CIVIL ENGINEERING CONSULTANTS, INC. - 2400 86th ST. #12 -DES MOINES, IOWA 50322

# UNITED STATES PUBLIC LAND SURVEY CORNER CERTIFICATE OF

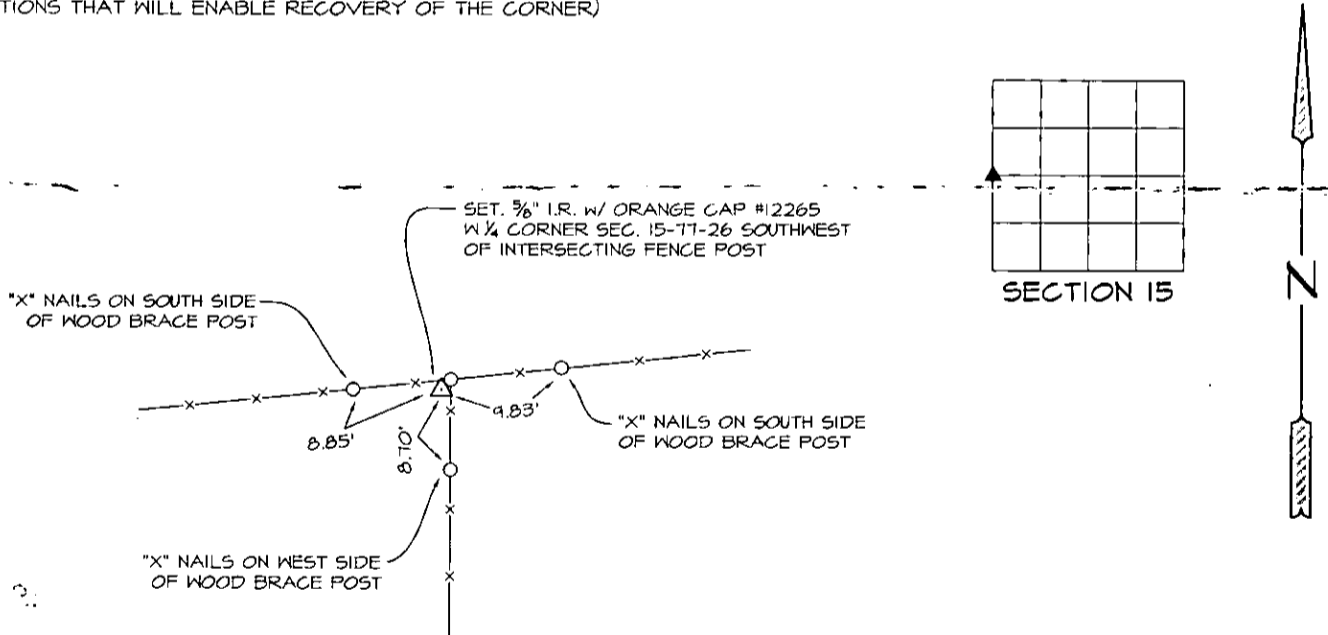
LAND SURVEY MONUMENTS SITUATED IN SECTION 15, TOWNSHIP 77 NORTH, RANGE 26 WEST, OF THE FIFTH PRINCIPAL MERIDIAN, MADISON COUNTY, IOWA.

### MONUMENT DESCRIPTION AND REMARKS:

AN IRON ROD WITH YELLOW CAP #8105 (TIES IN BOOK 1, PAGE 459) WAS LOCATED BY G.P.S. IN FEBRUARY 2005. THIS CORNER WAS REMOVED DURING FENCE CLEARING AND CONSTRUCTION. CORNER WAS RE-SET W/ 5/8" IRON ROD W/ ORANGE CAP #12265 AT SAME COORDINATES.

### PLAN -VIEW

(SHOW A MINIMUM OF THREE REFERENCE TIES TO DURABLE PHYSICAL OBJECTS, RELEVANT MONUMENTS AND PHYSICAL CONDITIONS THAT WILL ENABLE RECOVERY OF THE CORNER)



### LIST CORNERS TO BE INDEXED

CORNERS	SECTION	TWP	RANGE
SW CORNER	15	77	26



I HEREBY CERTIFY THAT THIS LAND SURVEYING DOCUMENT WAS PREPARED AND THE RELATED SURVEY WORK WAS PERFORMED BY ME OR UNDER MY DIRECT PERSONAL SUPERVISION AND THAT I AM A DUTY LICENSED LAND SURVEYOR UNDER THE LAWS OF THE STATE OF IOWA.

*Patrick J. Shepard* 9-30-07  
 PATRICK J. SHEPARD, IOWA LICENSE NO. 12265 DATE  
 MY LICENSE RENEWAL DATE IS DECEMBER 31, 2008

PAGES OR SHEETS COVERED BY THIS SEAL:  
 THIS SHEET ONLY