

INDY ✓
ANNC
SCAN
CHK

LISA SMITH, COUNTY RECORDER
MADISON IOWA

RETURN TO M/R MAPPING, INC., P.O. BOX 143, ADEL, IA 50003

UNITED STATES PUBLIC LAND SURVEY CORNER CERTIFICATE OF

Land Survey Monuments situated in Section 3, Township 77 North, Range 29 West of the Fifth Principal Meridian, Madison County, Iowa.

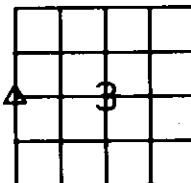
Previously recorded in _____ in County Recorder's Office.
(Book, page, document number, ect.)

(Show reason for preparing this certificate, the evidence and detailed procedures used in establishing the corner positions and found or placed.)

Monument Description and Remarks: Monuments were found and verified with existing Madison County Engineers Records.

PLAN - VIEW

(Show a minimum of three reference ties to durable physical objects, relevant monuments and physical conditions that will enable recovery of the corner)



W 1/4 CORNER
SEC. 3-77-29



W. 1/4 Cor.
Sec. 3-77-29
Fnd Lead Plug
& P-53 Bridge
19.75' N. of S.
end conc. bridge

HWY P-53

24.71'
Fnd Cut "X"
SW Wing Wall
Bridge

24.69'
Fnd Cut "X"
SE Wing Wall
Bridge

I hereby certify that this land surveying document was prepared and the related survey work was performed by me or under my direct personal supervision and that I am a duly licensed Land Surveyor under the laws of the State of Iowa.

Signed, James V. Rash Date 5-28-07

James V. Rash, L.S.
Iowa license No. 5898
My license renewal date is December 31, 2007



List Corners to be Indexed

Corners	Section	Twp.	Range
W1/4 Cor.	3	77	29
E1/4 Cor.	4	77	29