

LISA SMITH, COUNTY RECORDER  
MADISON IOWA

**VANCE & HOCHSTETLER, P.C., CONSULTING ENGINEERS, WINTERSSET, IOWA (515) 462-3995**  
CHARLES T. VANCE, 110 West Green St., Winterset, Iowa, 50273  
JAMES M HOCHSTETLER, 110 West Green St., Winterset, Iowa 50273

07-645

**UNITED STATES PUBLIC LAND SURVEY CORNER CERTIFICATE**

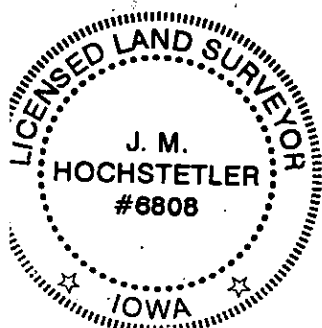
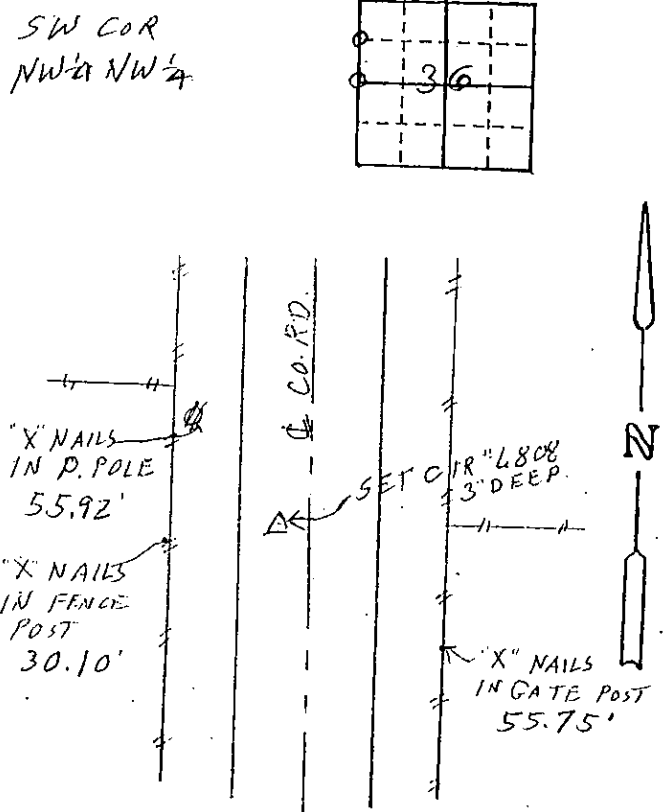
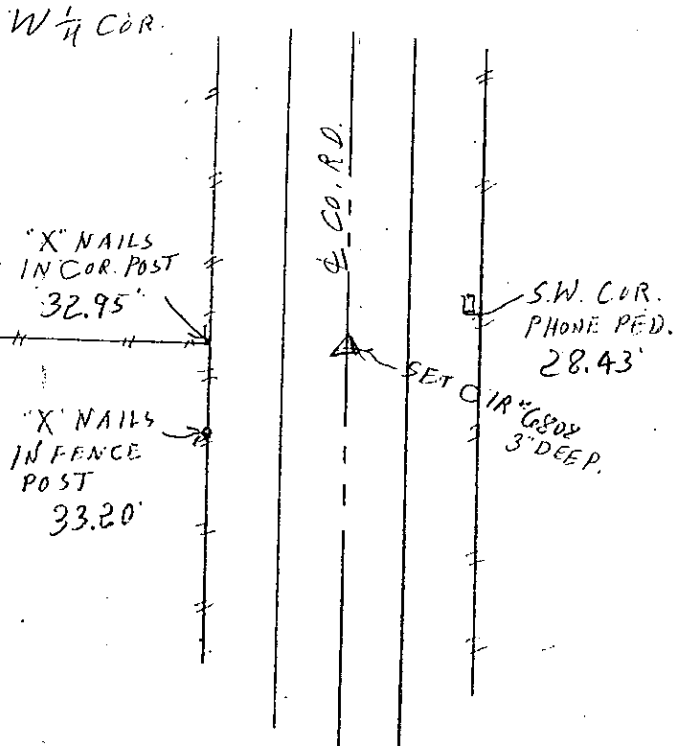
Land Survey Monuments situated in Section 36 OF Township 74 N, Range 28 W, of the Fifth Principal Meridian, MADISON County, Iowa.  
Previously recorded in \_\_\_\_\_ in County Recorder's Office.  
(book, page, document number, etc.)

(Show reason for preparing this certificate, the evidence and detailed procedures used in establishing the the corner positions and monumentation found or placed.)

Monument Description and Remarks: W 1/4 Cor. - Set yellow CIR #6808 3" deep at middle of County Road right-of-way in line with property line fence West  
SW Cor. NW 1/4 NW 1/4 - Set yellow CIR #6808 - 3" deep at midpoint on line between found NW Cor and set W 1/4 Cor

**PLAN - VIEW**

(Show a minimum of three reference ties to durable physical objects, relevant monuments and physical conditions that will enable recovery of the corner.)



I hereby certify that this land surveying document was prepared and the related survey work was performed by me or under my direct personal supervision and that I am a duly licensed Land Surveyor under the laws of the State of Iowa.  
J.M. Hochstetler  
J.M. HOCHSTETLER  
License number 6808 Date 5/8/07  
My license renewal date is December 31, 2007  
Pages or sheets covered by this seal: 1

List Corners to be Indexed

Corners	Section	Twp	Range
W 1/4 COR	36	74 N	28 W
SW COR			
NW 1/4 NW 1/4	36	74 N	28 W