

IND ✓
ANN ✓
SCAN
CHEF

LISA SMITH, COUNTY RECORDER
MADISON IOWA

Prepared By: Michael James Hackett, Madison County Engineer's Office, 1105 E. Court Ave., Winterset, Ia. 50273, Tel. (515) 462-1136

UNITED STATES PUBLIC LAND SURVEY CORNER CERTIFICATE OF

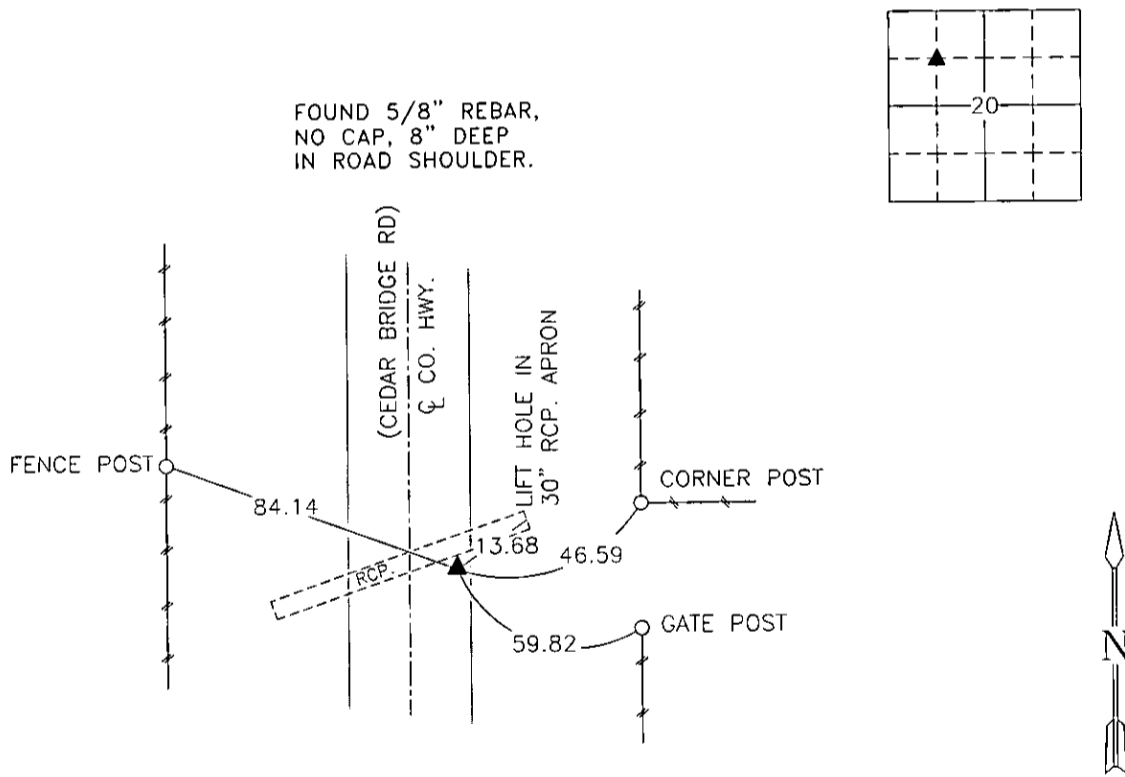
Land Survey Monuments situated in Section 20, Township 76 N, Range 27 W, of the Fifth Principal Meridian, Madison County, Iowa.
Previously recorded in Book 1, Page 412, Book 1, Page 688 in County Recorder's Office.
(book, page, document number, etc.)

(Show reason for preparing this certificate, the evidence and detailed procedures used in establishing the corner positions and monumentation found or placed.)

Monument Description and Remarks: Found 5/8" rebar, no cap, 8" deep, in road shoulder. The reason for preparing this certificate is because the existing ties distances were inconsistent with the previously recorded corner certificate. To verify position of the found 5/8" rebar, traversed to the northeast corner of the Northwest Quarter of the Southwest Quarter. Measured distance between section corners checked with previous record distances. Accepted position.

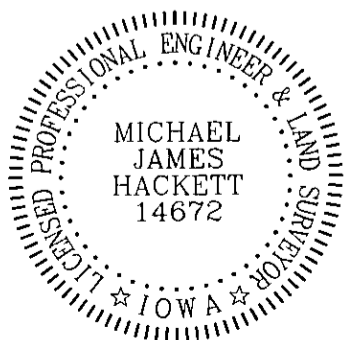
PLAN VIEW

(Show a minimum of three reference ties to durable physical objects, relevant monuments and physical conditions that will enable recovery of the corner.)



NW. COR., SE. 1/4, NW. 1/4, SEC. 20

NOTE: ALL TIES TO "X" NAILS UNLESS NOTED



I hereby certify that this land surveying document was prepared and the related survey work was performed by me or under my direct personal supervision and that I am a duly Licensed Land Surveyor under the laws of the State of Iowa.

Signed Michael James Hackett Date 4-26-2007
Michael James Hackett

Iowa license number 14672.
My license renewal date is 12/31/2008.
Pages covered by this seal: 1.