

IND ✓  
ANN ✓  
SCAN  
CHECK

LISA SMITH, COUNTY RECORDER  
MADISON IOWA

VANCE & HOCHSTETLER, P.C., CONSULTING ENGINEERS, WINTERSET, IOWA (515) 462-3995  
CHARLES T. VANCE, 110 West Green St., Winterset, Iowa, 50273  
JAMES M HOCHSTETLER, 110 West Green St., Winterset, Iowa 50273

UNITED STATES PUBLIC LAND SURVEY CORNER CERTIFICATE  
OF

Land Survey Monuments situated in Section 3, Township 75 N, Range 29W, of the Fifth Principal Meridian, MADISON County, Iowa.  
Previously recorded in Book 1 Page 9 & Book 1 Page 8 in County Recorder's Office.  
(book, page, document number, etc.)

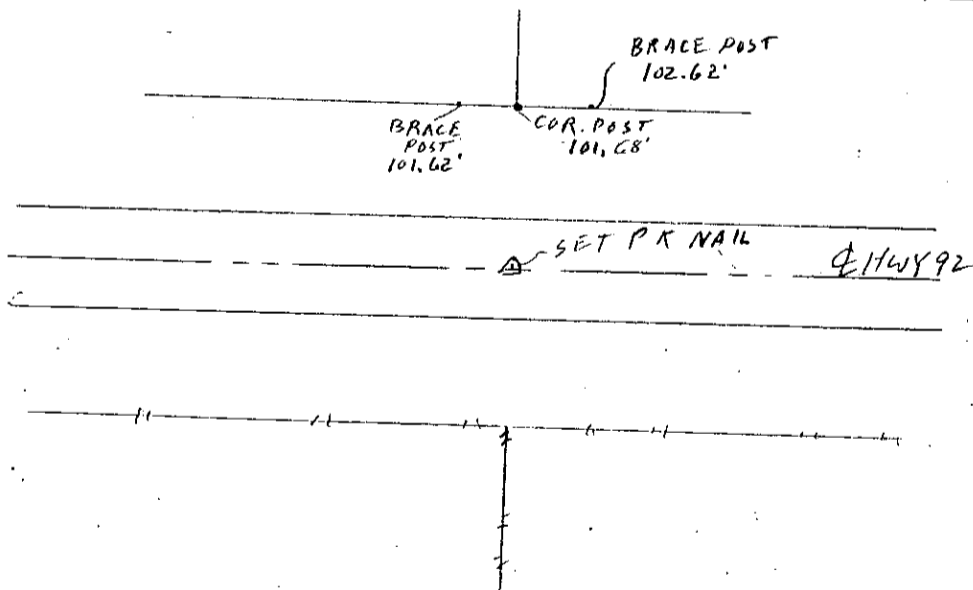
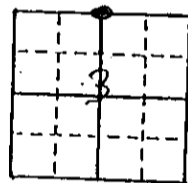
(Show reason for preparing this certificate, the evidence and detailed procedures used in establishing the corner positions and monumentation found or placed.)

Monument Description and Remarks: N 1/4 COR - Old ties show "X" cut in concrete but Hwy 92 has an asphalt overlay. We found old ties on the North side and we set P.K. Nail based on old ties. Point matched Hwy 92 and was in line with fence to the South. Distance from NW Cor to N 1/4 Cor was reasonably close to DOT measurement and distance shown on a plat of survey by Morrissey

PLAN - VIEW

(Show a minimum of three reference ties to durable physical objects, relevant monuments and physical conditions that will enable recovery of the corner.)

N 1/4 COR  
SEC. 3-75-29



List Corners to be Indexed

Corners	Section	Twp	Range
N 1/4 Cor.	3	75N	29W

I hereby certify that this land surveying document was prepared and the related survey work was performed by me or under my direct personal supervision and that I am a duly licensed Land Surveyor under the laws of the State of Iowa.

J.M. Hochstetler  
J.M. HOCHSTETLER  
License number 6808 Date 4/11/07  
My license renewal date is December 31, 2007  
Pages or sheets covered by this seal: 1

