

INDEX
ANNEX
SCAN
CHECK

LISA SMITH, COUNTY RECORDER
MADISON IOWA

VANCE & HOCHSTETLER, P.C., CONSULTING ENGINEERS, WINTERSSET, IOWA (515) 462-3995
CHARLES T. VANCE, 110 West Green St., Winterset, Iowa, 50273
JAMES M HOCHSTETLER, 110 West Green St., Winterset, Iowa 50273

UNITED STATES PUBLIC LAND SURVEY CORNER CERTIFICATE

Land Survey Monuments situated in Section 3 OF 3 Township 75 N Range 29 W of the Fifth Principal Meridian, _____ County, Iowa.
Previously recorded in Book 1 Page 9, Book 1 Page 8 & Book 1 Page 97 in County Recorder's Office.
(book, page, document number, etc.)

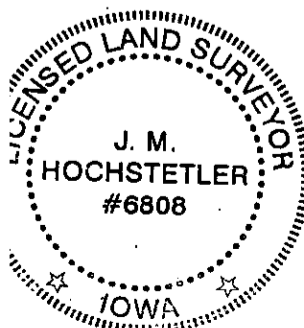
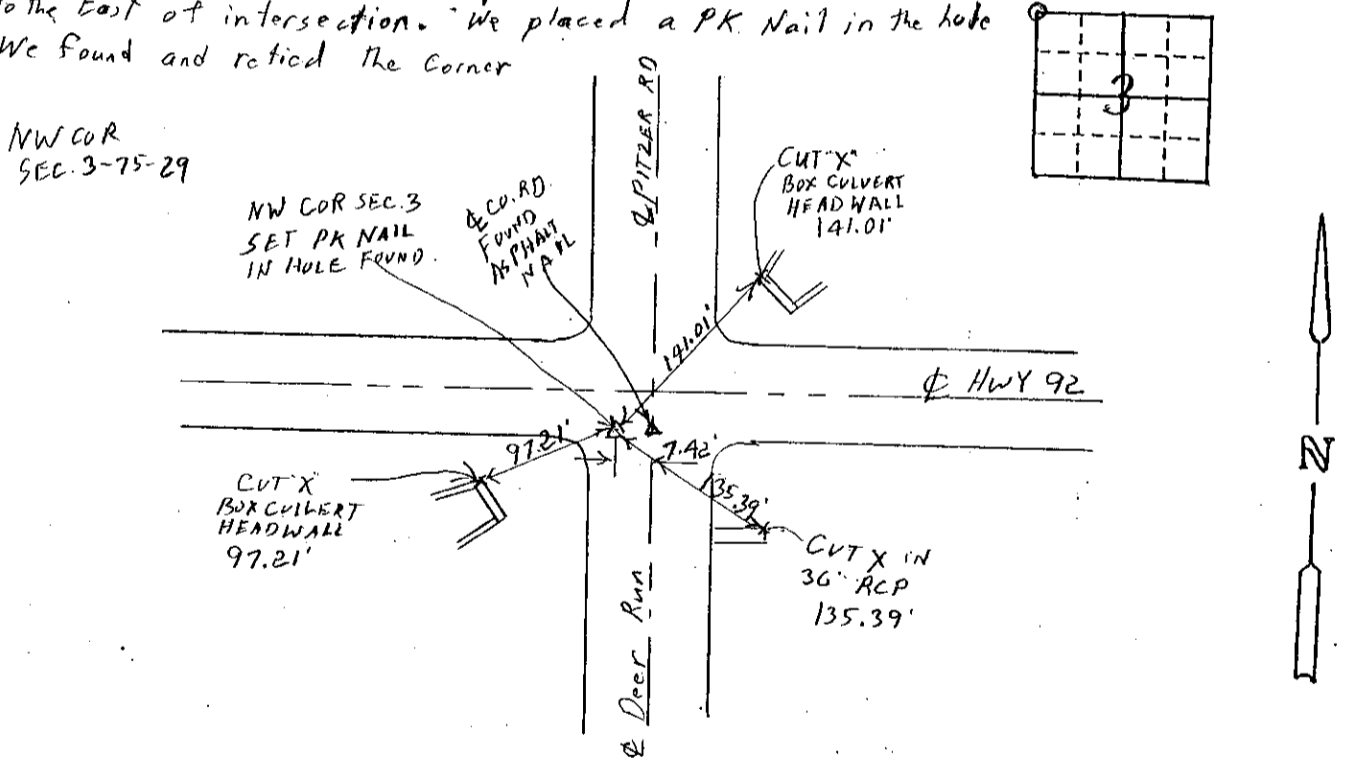
(Show reason for preparing this certificate, the evidence and detailed procedures used in establishing the corner positions and monumentation found or placed.)

Monument Description and Remarks: NW Cor. Sec. 3 - Book 1 Page 97 (NE cor Sec 4) indicates Asphalt Nail by DOT (4/4/91), Book 1 Page 8 (SW cor sec 34-76-29) indicates lead plug in concrete by DOT (1/9/91) We found Asphalt Nail but it did not match ROW Corners set for Acquisition Plat filed in Deed Record 129 Page 21. We could not find Concrete Monuments or 5/8" C.I.R.'s indicated on ties. We found a note on plans for grading of Co. Rd. to Macksburg showing a lead plug in concrete by DOT at Sec. Corner and "X" cut in concrete by DOT at 7' of road South which was 7.42' East of Sec. Corner. We found a hole in the asphalt

PLAN - VIEW

(Show a minimum of three reference ties to durable physical objects, relevant monuments and physical conditions that will enable recovery of the corner.)

overlay at a point 7.42' West of Asphalt Nail and it matched The ROW Corners found to the East of intersection. We placed a PK Nail in the hole We found and retied The Corner



I hereby certify that this land surveying document was prepared and the related survey work was performed by me or under my direct personal supervision and that I am a duly licensed Land Surveyor under the laws of the State of Iowa.

J.M. Hochstetler
J.M. HOCHSTETLER
License number 6808 Date 4/11/07
My license renewal date is December 31, 2007
Pages or sheets covered by this seal: 1

List Corners to be Indexed

Corners	Section	Twp	Range
NW COR	3	75	29