

LISA SMITH, COUNTY RECORDER
MADISON IOWA

CHEK

UNITED STATES PUBLIC LAND SURVEY CORNER CERTIFICATE

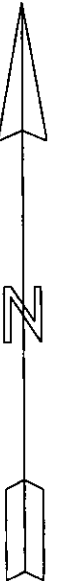
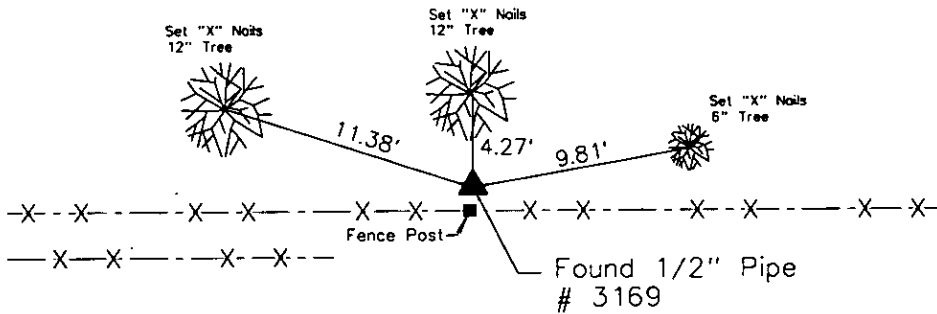
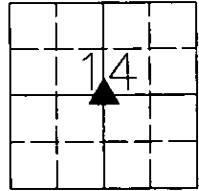
LAND SURVEY MONUMENTS SITUATED IN SECTION 14 of 77 TOWNSHIP 26 RANGE Madison County, Iowa.

Monument Description & Remarks: Researched at Madison County Recorders Office, No Corner Certificate was located.

Searched and found 1/2" Pipe with Cap #3169. Location matched with pipe shown as set on "Walker Hill, Conceptual Plan B"

(Refr No 92-25, Proj. No 03-0371) by Bishop Engineering. Also lined up with treeline to the south.

PLAN VIEW



Center 1/4 Corner 14-77-26

I HEREBY CERTIFY THAT THIS SURVEYING DOCUMENT WAS PREPARED AND THE RELATED WORK WAS PERFORMED BY ME OR UNDER MY DIRECT PERSONAL SUPERVISION, AND THAT I AM A DULY LICENSED PROFESSIONAL LAND SURVEYOR UNDER THE LAWS OF THE STATE OF IOWA.

Mark A. McMurphy 2-9-07
MARK A. MCMURPHY, IOWA LIC. NO. 14674 DATE

MY LICENSE RENEWAL DATE IS DECEMBER 31, 2008.

ADDITIONAL PAGES CERTIFIED (NONE UNLESS INDICATED HERE)



Corners to be Indexed:
Corner Section Twp Range
Center 1/4 14 77 26
Corner