

LISA SMITH, COUNTY RECORDER
MADISON IOWA

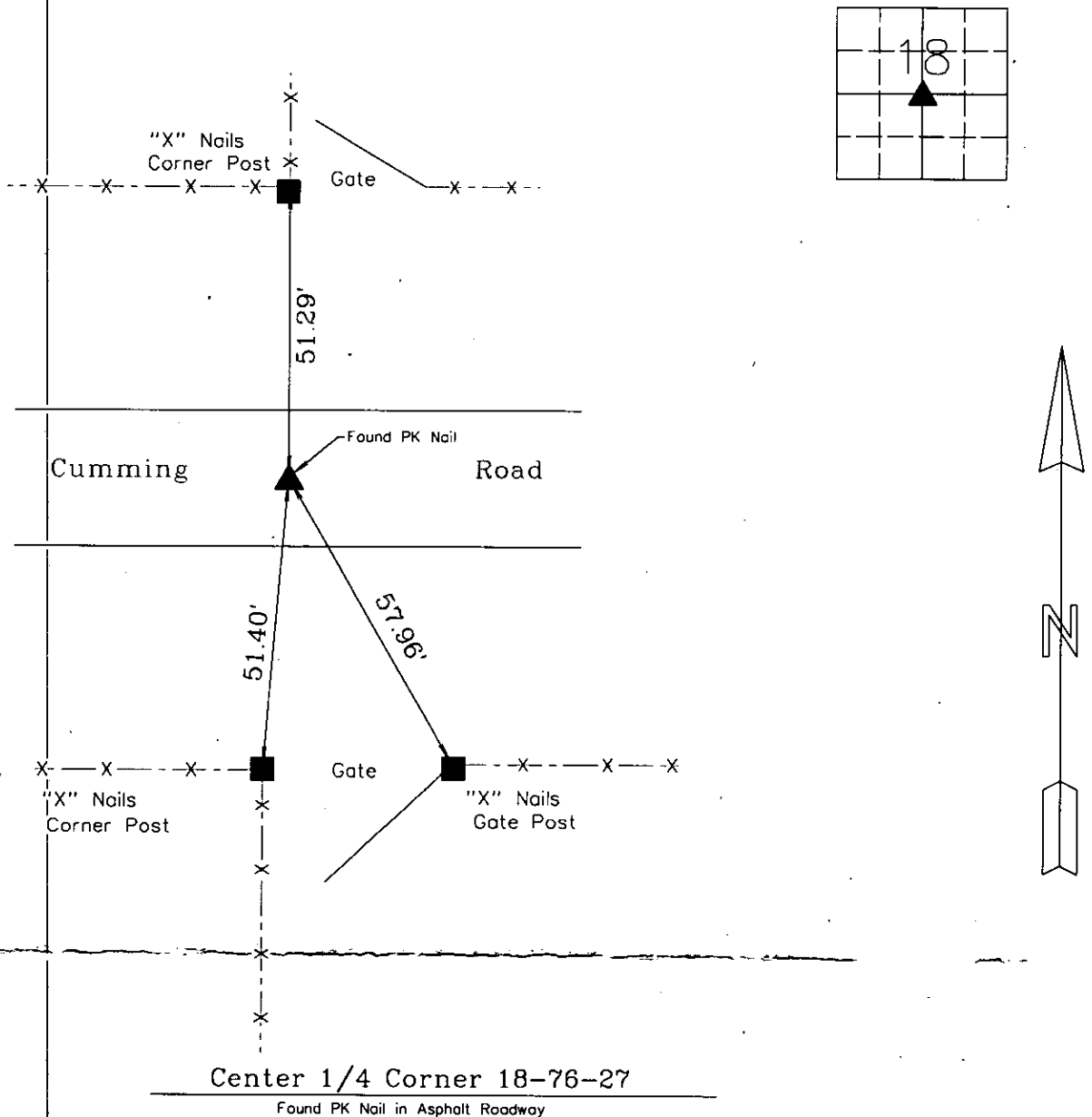
UNITED STATES PUBLIC LAND SURVEY CORNER CERTIFICATE

of
LAND SURVEY MONUMENTS SITUATED IN SECTION 18, TOWNSHIP 76, RANGE 27, of the Fifth Principal Meridian, Madison County, Iowa.

Monument Description & Remarks: No ties available from County Recorder's Office or County Engineer's Office. Located a plat with the said corner referenced as a nail being set from previous ties.

Plat is recorded at Book 1, Page 236. Monument matched description, and lined up with center of road and fence: retied monument.

PLAN VIEW

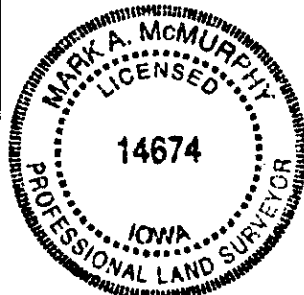


I HEREBY CERTIFY THAT THIS SURVEYING DOCUMENT WAS PREPARED AND THE RELATED WORK WAS PERFORMED BY ME OR UNDER MY DIRECT PERSONAL SUPERVISION, AND THAT I AM A DULY LICENSED PROFESSIONAL LAND SURVEYOR UNDER THE LAWS OF THE STATE OF IOWA.

Mark A. McMurry 2-9-07
MARK A. MCMURPHY, IOWA LIC NO 14674 DATE

MY LICENSE RENEWAL DATE IS DECEMBER 31, 2008.

ADDITIONAL PAGES CERTIFIED (NONE UNLESS INDICATED HERE)



Corner	Section	Twp	Range
Center 1/4 Corner	18	76	27