

INDX ✓  
ANNO  
SCAN  
CHK

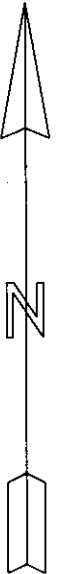
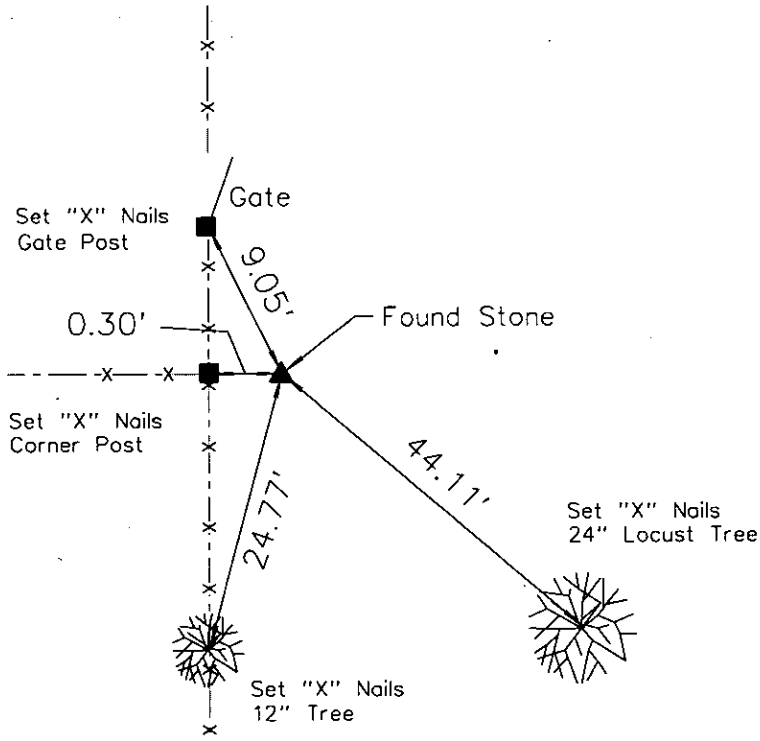
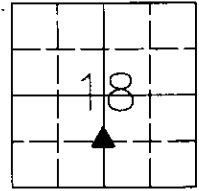
LISA SMITH, COUNTY RECORDER  
MADISON IOWA

# UNITED STATES PUBLIC LAND SURVEY CORNER CERTIFICATE

LAND SURVEY MONUMENTS SITUATED IN SECTION 18 of 18, TOWNSHIP 76, RANGE 27, of the Fifth Principal Meridian, Madison County, Iowa.

Monument Description & Remarks: No ties were available from County Recorder's Office or County Engineer's Office. Calculated the point location relative to other monuments found in the section: excavated, probed, and sounded at location.  
Found stone lines up with the fence N-S and fence running West: tied out monument.

## PLAN VIEW



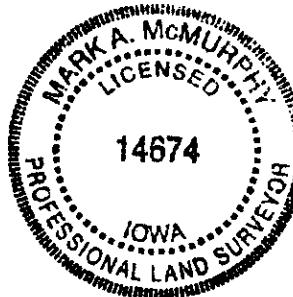
Center South 1/16 Corner Sec. 18-79-27  
Found Stone

I HEREBY CERTIFY THAT THIS SURVEYING DOCUMENT WAS PREPARED AND THE RELATED WORK WAS PERFORMED BY ME OR UNDER MY DIRECT PERSONAL SUPERVISION, AND THAT I AM A DULY LICENSED PROFESSIONAL LAND SURVEYOR UNDER THE LAWS OF THE STATE OF IOWA.

*Mark A. McMurry* 2-9-07  
MARK A. MCMURPHY, IOWA LIC. NO. 14674 DATE

MY LICENSE RENEWAL DATE IS DECEMBER 31, 2008.

ADDITIONAL PAGES CERTIFIED (NONE UNLESS INDICATED HERE)



Corners to be Indexed:  
Corner Section Twp Range  
Ctr. S 1/16 18 79 27