

INDX ✓
ANNO
SCAN
CHEK

LISA SMITH, COUNTY RECORDER
MADISON IOWA

UNITED STATES PUBLIC LAND SURVEY CORNER CERTIFICATE

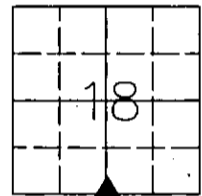
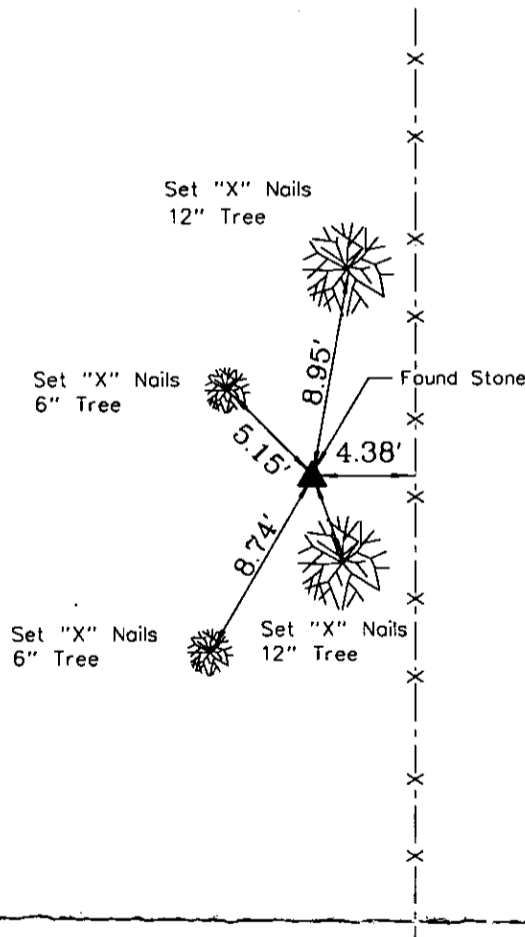
LAND SURVEY MONUMENTS SITUATED IN SECTION 18, TOWNSHIP 79, RANGE 27, of the Fifth Principal Meridian, Madison County, Iowa.

Monument Description & Remarks: No ties were available from County Recorder's Office or County Engineer's Office.

Calculated corner location relative to other section corners found: excavated, probed, and sounded,

Found stone 0.80 feet deep, found remnant of fence line running West - tied out Monument.

PLAN VIEW



South 1/4 Corner 18-76-27

Found Stone

I HEREBY CERTIFY THAT THIS SURVEYING DOCUMENT WAS PREPARED AND THE RELATED WORK WAS PERFORMED BY ME OR UNDER MY DIRECT PERSONAL SUPERVISION, AND THAT I AM A DULY LICENSED PROFESSIONAL LAND SURVEYOR UNDER THE LAWS OF THE STATE OF IOWA.

Mark A. McMurphy 2-9-07
MARK A. MCMURPHY, IOWA LIC. NO. 14674 DATE

MY LICENSE RENEWAL DATE IS DECEMBER 31, 2008.

ADDITIONAL PAGES CERTIFIED (NONE UNLESS INDICATED HERE)



Corners to be Indexed:

Corner	Section	Twp	Range
S 1/4	18	76	27