

INDX ✓  
ANNO  
SCAN  
CHEK

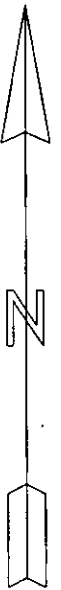
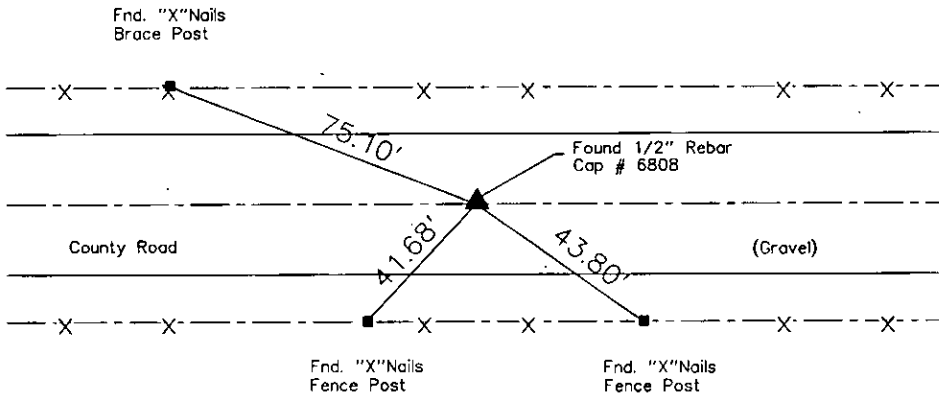
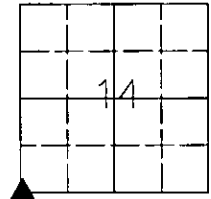
LISA SMITH, COUNTY RECORDER  
MADISON IOWA

# UNITED STATES PUBLIC LAND SURVEY CORNER CERTIFICATE

LAND SURVEY MONUMENTS SITUATED IN SECTION 14 of 77, TOWNSHIP 26, RANGE Madison County, Iowa.

Monument Description & Remarks: Found corner certificate at Recorders Office Bk.2 Pg.8  
Two of the ties mached and the monument description matched, retied.

## PLAN VIEW



### SW Corner 14-77-26

Found 1/2" Rebar cap # 6808

I HEREBY CERTIFY THAT THIS SURVEYING DOCUMENT WAS PREPARED AND THE RELATED WORK WAS PERFORMED BY ME OR UNDER MY DIRECT PERSONAL SUPERVISION, AND THAT I AM A DULY LICENSED PROFESSIONAL LAND SURVEYOR UNDER THE LAWS OF THE STATE OF IOWA.

*Mark A. McMURPHY* 2-9-07  
MARK A. MCMURPHY, IOWA LIC. NO 14674 DATE

MY LICENSE RENEWAL DATE IS DECEMBER 31, 2008.

ADDITIONAL PAGES CERTIFIED (NONE UNLESS INDICATED HERE)



Corners to be Indexed:			
Corner	Section	Twp	Range
SW Corner	14	77	28