

INDX ✓
ANNO
SCAN
CHEK

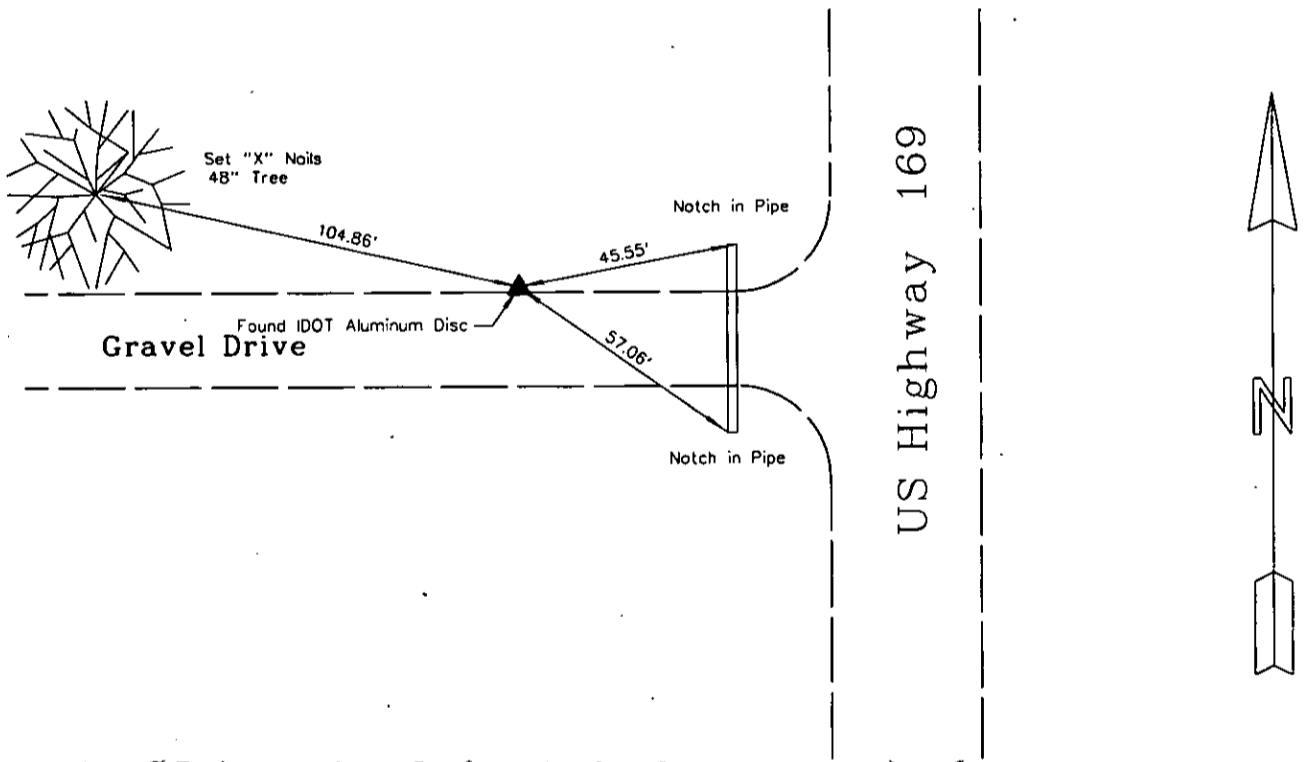
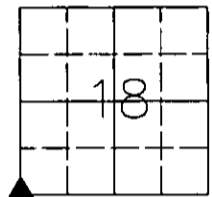
LISA SMITH, COUNTY RECORDER
MADISON IOWA

UNITED STATES PUBLIC LAND SURVEY CORNER CERTIFICATE

LAND SURVEY MONUMENTS SITUATED IN SECTION 18 of 18, TOWNSHIP 76, RANGE 27, of the Fifth Principal Meridian, Madison County, Iowa.

Monument Description & Remarks: Searched at the County Recorder's Office: found ties at Book 1, Page 100, two of the ties were obliterated, Monument matched description - retied monument.

PLAN VIEW



South West Corner 18-76-27

Found IDOT Aluminum Disc

I HEREBY CERTIFY THAT THIS SURVEYING DOCUMENT WAS PREPARED AND THE RELATED WORK WAS PERFORMED BY ME OR UNDER MY DIRECT PERSONAL SUPERVISION, AND THAT I AM A DULY LICENSED PROFESSIONAL LAND SURVEYOR UNDER THE LAWS OF THE STATE OF IOWA.

Mark A. McMURPHY 2-9-07
MARK A. MCMURPHY, IOWA LIC. NO 14674 DATE

MY LICENSE RENEWAL DATE IS DECEMBER 31, 2008.

ADDITIONAL PAGES CERTIFIED (NONE UNLESS INDICATED HERE)



Corners to be Indexed:			
Corner	Section	Twp	Range
SW Corner	18	76	27