

INDX ✓
ANNO
SCAN
CHEK

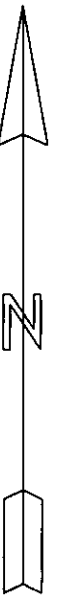
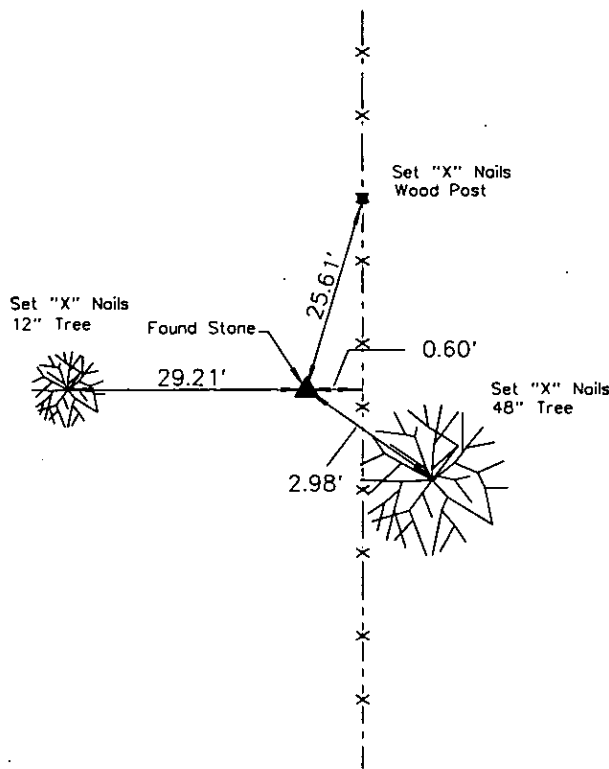
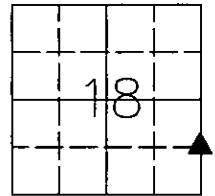
LISA SMITH, COUNTY RECORDER
MADISON IOWA

UNITED STATES PUBLIC LAND SURVEY CORNER CERTIFICATE

of
LAND SURVEY MONUMENTS SITUATED IN SECTION 18, TOWNSHIP 76, RANGE
27, of the Fifth Principal Meridian, Madison County, Iowa.

Monument Description & Remarks: No ties available from the County Recorder's Office or County Engineer's Office.
Calculated corner location relative to monuments found for East 1/4 corners to North and South: excavated, probed, and
sounded: found stone - tied out monument.

PLAN VIEW



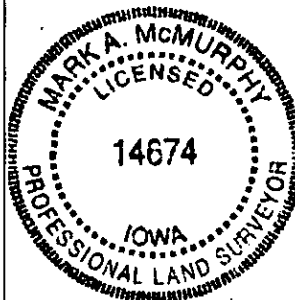
South 1/16 Corner On East Line 18=76=27
Found Stone

I HEREBY CERTIFY THAT THIS SURVEYING DOCUMENT WAS PREPARED AND THE RELATED WORK WAS PERFORMED BY ME OR UNDER MY DIRECT PERSONAL SUPERVISION, AND THAT I AM A DULY LICENSED PROFESSIONAL LAND SURVEYOR UNDER THE LAWS OF THE STATE OF IOWA.

Mark A. McMurphy 2-9-07
MARK A. MCMURPHY, IOWA LIC. NO. 14674 DATE

MY LICENSE RENEWAL DATE IS DECEMBER 31, 2008.

ADDITIONAL PAGES CERTIFIED (NONE UNLESS INDICATED HERE)



Corners to be Indexed:
Corner Section Twp Range
S 1/16 E Line 18 76 27