

INDEX ✓
ANNO
SCAN
CHEK

LISA SMITH, COUNTY RECORDER
MADISON IOWA

VANCE & HOCHSTETLER, P.C., CONSULTING ENGINEERS, WINTERSSET, IOWA (515) 462-3995
CHARLES T. VANCE, 110 West Green St., Winterset, Iowa, 50273
JAMES M HOCHSTETLER, 110 West Green St., Winterset, Iowa 50273

UNITED STATES PUBLIC LAND SURVEY CORNER CERTIFICATE

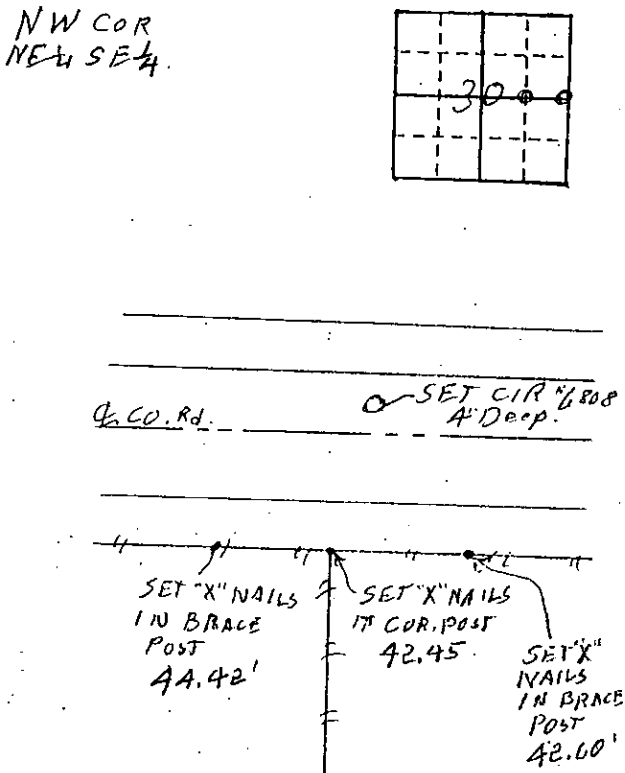
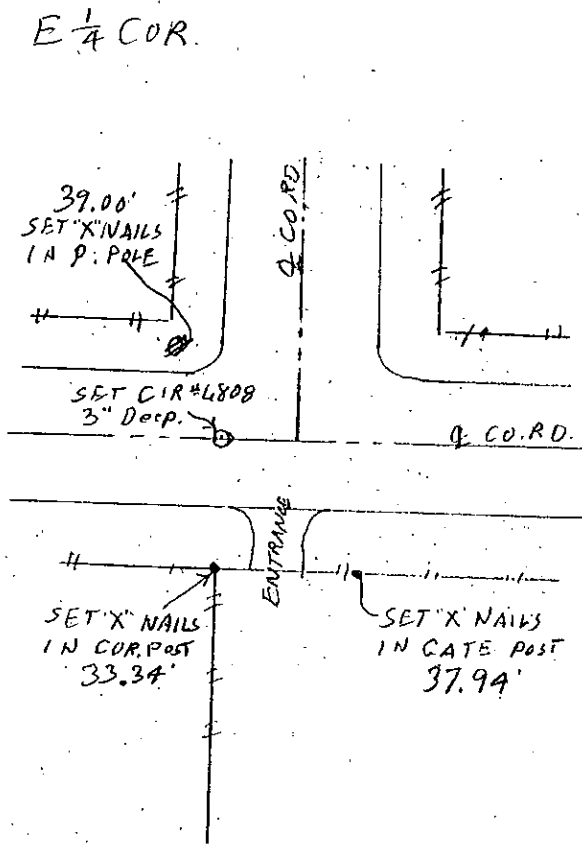
Land Survey Monuments situated in Section OF 30 Township 79N Range 27W
of the Fifth Principal Meridian, MADISON County, Iowa.
Previously recorded in _____ in County Recorder's Office.
(book, page, document number, etc.)

(Show reason for preparing this certificate, the evidence and detailed procedures used in establishing the corner positions and monumentation found or placed.)

Monument Description and Remarks: E 1/4 Cor - Set yellow CIR #6808 3" deep at centerline of East-West road in line with old property line fence south. Old 1950 road plans for the road North indicated that the property line fence south was West of the road centerline and the distance to a 1/2" Iron Rod found at the center of Section was more reasonable. NW Cor NE 1/4 SE 1/4 - Set yellow CIR #6808 at mid point on line between found center and set E 1/4 Cor.

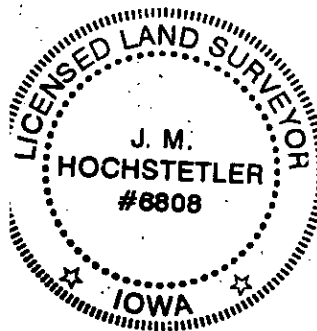
PLAN - VIEW

(Show a minimum of three reference ties to durable physical objects, relevant monuments and physical conditions that will enable recovery of the corner.)



List Corners to be Indexed

Corners	Section	Twp	Range
E 1/4 COR	30	79N	27W
NW COR NE 1/4 SE 1/4	30	79N	27W



I hereby certify that this land surveying document was prepared and the related survey work was performed by me or under my direct personal supervision and that I am a duly licensed Land Surveyor under the laws of the State of Iowa.

Jon. Hochstetler
J.M. HOCHSTETLER
License number 6808 Date 12/15/06
My license renewal date is December 31, 2007
Pages or sheets covered by this seal: 1