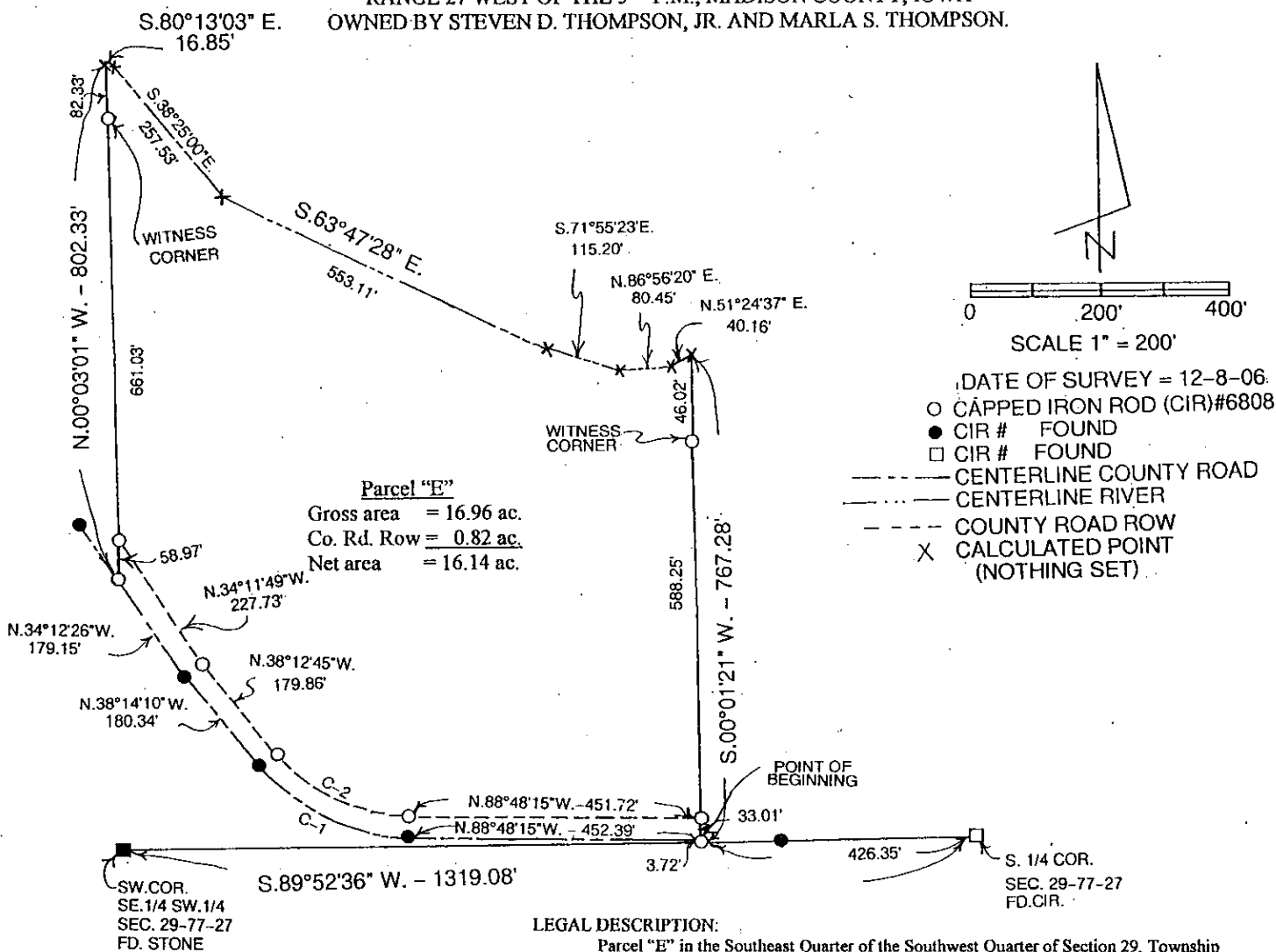


INDEX ✓  
 ANNO  
 SCAN  
 CHEK

LISA SMITH, COUNTY RECORDER  
 MADISON IOWA

**VANCE & HOCHSTETLER, P.C. CONSULTING ENGINEERS, WINTERSSET, IOWA (515)462-3995**  
**CHARLES T. VANCE, 110 WEST GREEN ST., WINTERSSET, IOWA 50273-1533**  
**JAMES M. HOCHSTETLER, 110 WEST GREEN ST., WINTERSSET, IOWA 50273-1533**

PLAT OF SURVEY IN THE SOUTHEAST QUARTER OF THE  
 SOUTHWEST QUARTER OF SECTION 29, TOWNSHIP 77 NORTH,  
 RANGE 27 WEST OF THE 5<sup>TH</sup> P.M., MADISON COUNTY, IOWA  
 OWNED BY STEVEN D. THOMPSON, JR. AND MARLA S. THOMPSON.



I hereby certify that this land surveying document was prepared and the related survey work was performed by me or under my direct personal supervision and that I am a duly licensed Land Surveyor under the laws of the State of Iowa.

*J. M. Hochstetler*  
 J.M. HOCHSTETLER  
 License number 6808 Date 12/19/06  
 My license renewal date is December 31, 2007  
 Pages or sheets covered by this seal: 1

LICENSED LAND SURVEYOR  
 J. M. HOCHSTETLER  
 #6808  
 IOWA