

MICHELLE UTSLER, COUNTY RECORDER
 MADISON IOWA

COMPUTER _____
 RECORDED _____
 COMPARED _____

ASSOCIATED ENGINEERING COMPANY OF IOWA, 2917 MARTIN LUTHER KING JR. PARKWAY, DES MOINES, IOWA, (515) 255-3156

UNITED STATES PUBLIC LAND SURVEY CORNER CERTIFICATE OF

Land survey monuments situated in Section 1, Township 74, Range 27
 of the Fifth Principal Meridian, MADISON County, Iowa. Previously recorded
 in _____ in County Recorder's Office.

(Show reason for preparing this certificate, the evidence and detailed procedures used in establishing the corner positions & monumentation found or placed.)

MONUMENT DESCRIPTION AND REMARKS:

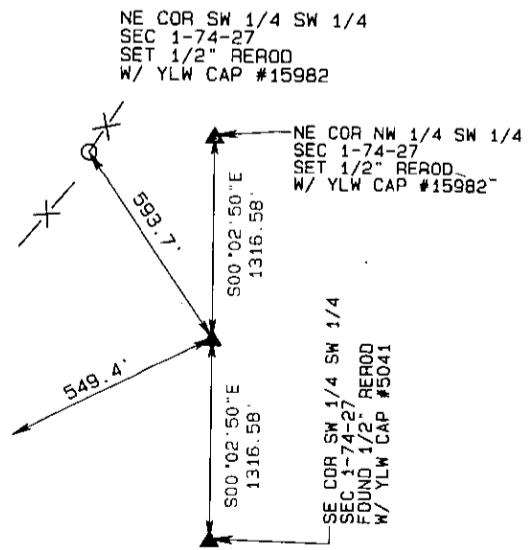
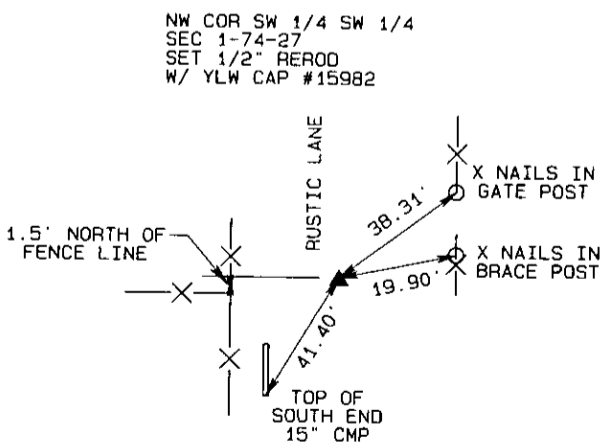
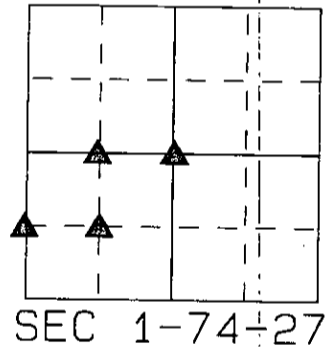
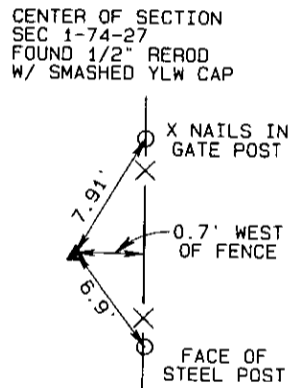
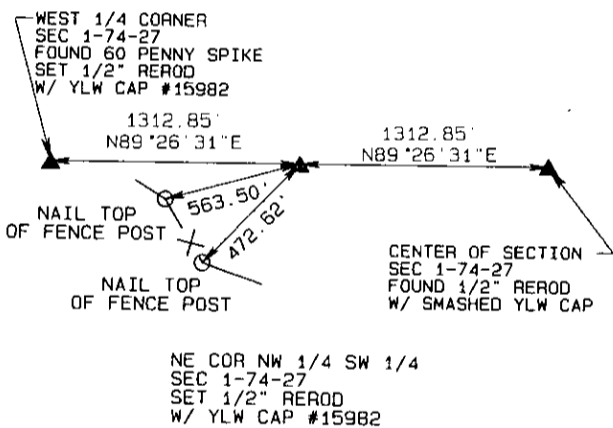
NW COR SW1/4 SW1/4 - SET CORNER IN STRAIGHT LINE BETWEEN W1/4 CORNER
 AND SW CORNER, SET NORTH OF FENCE LINE RUNNING EAST/WEST
 NE COR NW1/4 SW1/4 - SET CORNER IN STRAIGHT LINE ON EVEN DIVISION
 BETWEEN W1/4 CORNER AND CENTER OF SECTION
 NE COR SW1/4 SW1/4 - SET CORNER IN STRAIGHT LINE ON EVEN DIVISION
 BETWEEN SE COR SW1/4 SW1/4 AND NE COR NW1/4 SW1/4

SET 1/2" X 22' RERODS WITH YLW CAP #15982

CENTER OF SECTION - FOUND 1/2" REROD, SMASHED YLW CAP

PLAN - VIEW

(Show a minimum of three reference ties to durable physical objects, relevant monuments and physical conditions that will enable recovery of the corner.)



(ALL DISTANCE ARE MEASURED HORIZONTAL UNLESS NOTED)

I hereby certify that this land surveying document was prepared and the related survey work was performed by me or under my direct personal supervision and that I am a duly licensed Land Surveyor, under the laws of the State of Iowa.

Signed *Vincent E. Piagentini* Date *9/29/06*



VINCENT E. PIAGENTINI, L.S., Iowa Reg. No 15982
 MY LICENSE RENEWAL DATE IS - DECEMBER 31, 2006

PAGES OR SHEETS COVERED BY THIS SEAL: 1 OF 1

Corners to be Indexed

Corner	Sec.	Twp.	Range
NE COR NW1/4 SW1/4	1	74	27
NE COR SW1/4 SW1/4	1	74	27
NW COR SW1/4 SW1/4	1	74	27
CENTER OF SECTION	1	74	27