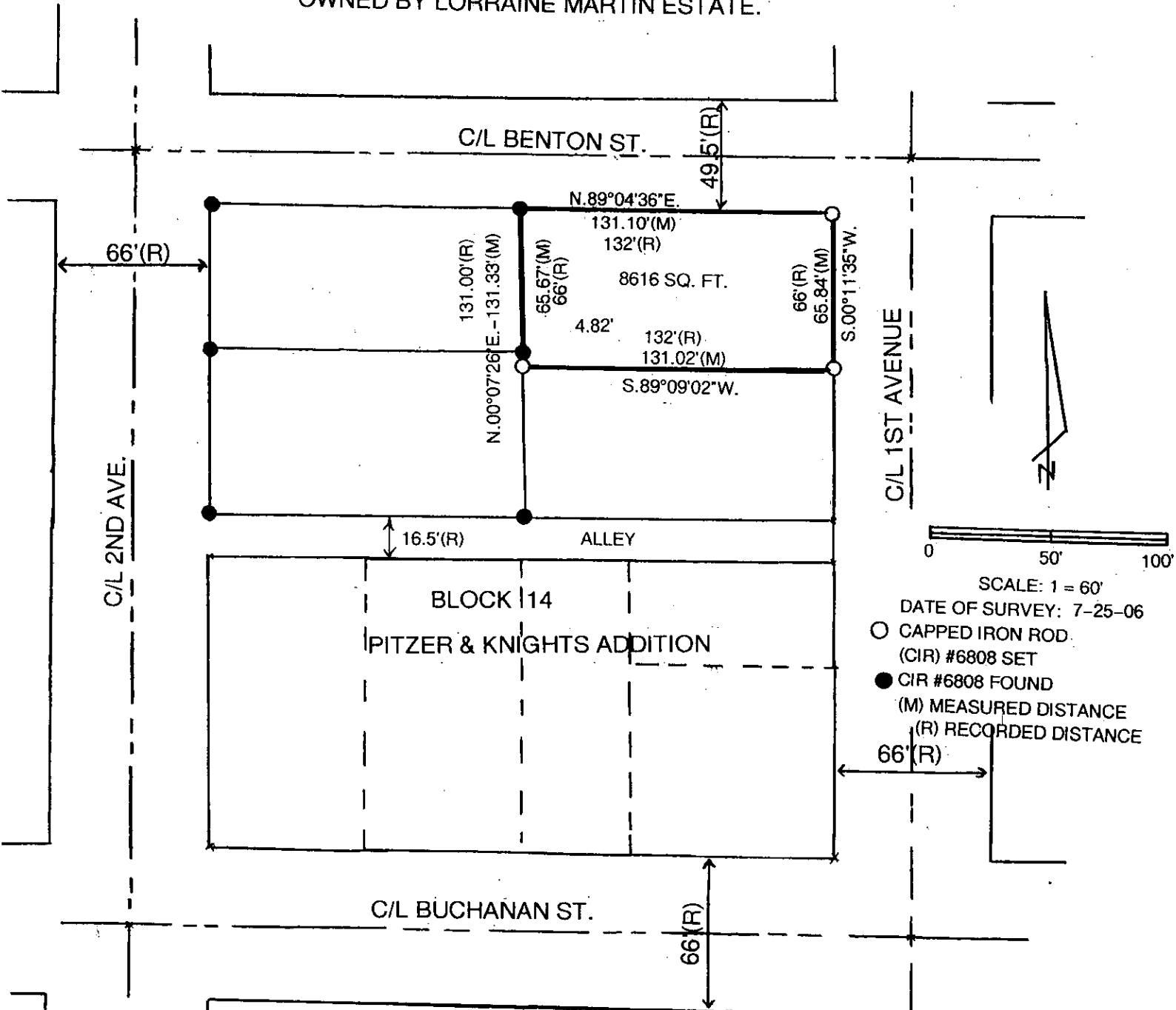


MICHELLE UTSLER, COUNTY RECORDER
MADISON IOWA

COMPUTER	<input checked="" type="checkbox"/>
RECORDED	<input checked="" type="checkbox"/>
COMPARED	<input type="checkbox"/>

VANCE & HOCHSTETLER, P.C. CONSULTING ENGINEERS, WINTERSET, IOWA (515)462-3995
CHARLES T. VANCE, 110 WEST GREEN ST., WINTERSET, IOWA 50273-1533
JAMES M. HOCHSTETLER, 110 WEST GREEN ST., WINTERSET, IOWA 50273-1533

PLAT OF SURVEY OF A PORTION OF BLOCK 14, PITZER & KNIGHT'S
ADDITION TO THE CITY OF WINTERSET, MADISON COUNTY, IOWA
OWNED BY LORRAINE MARTIN ESTATE.



I hereby certify that this land surveying document was prepared and the related survey work was performed by me or under my direct personal supervision and that I am a duly licensed Land Surveyor under the laws of the State of Iowa.

J.M. Hochstetler
 J.M. HOCHSTETLER
 License number 6808 Date 9/19/06
 My license renewal date is December 31, 2007
 Pages or sheets covered by this seal: 1