

MICHELLE UTSLER, COUNTY RECORDER
MADISON IOWA

COMPUTER	<input checked="" type="checkbox"/>
RECORDED	<input checked="" type="checkbox"/>
COMPARSED	<input type="checkbox"/>

ASSOCIATED ENGINEERING COMPANY OF IOWA, 2917 MARTIN LUTHER KING JR. PARKWAY, DES MOINES, IOWA, (515) 255-3156

UNITED STATES PUBLIC LAND SURVEY CORNER CERTIFICATE OF

Land survey monuments situated in Section 04, Township 77, Range 27
of the Fifth Principal Meridian, Madison County, Iowa. Previously recorded
in n/a in County Recorder's Office.

(Show reason for preparing this certificate, the evidence and detailed procedures used in establishing the corner positions & monumentation found or placed.)

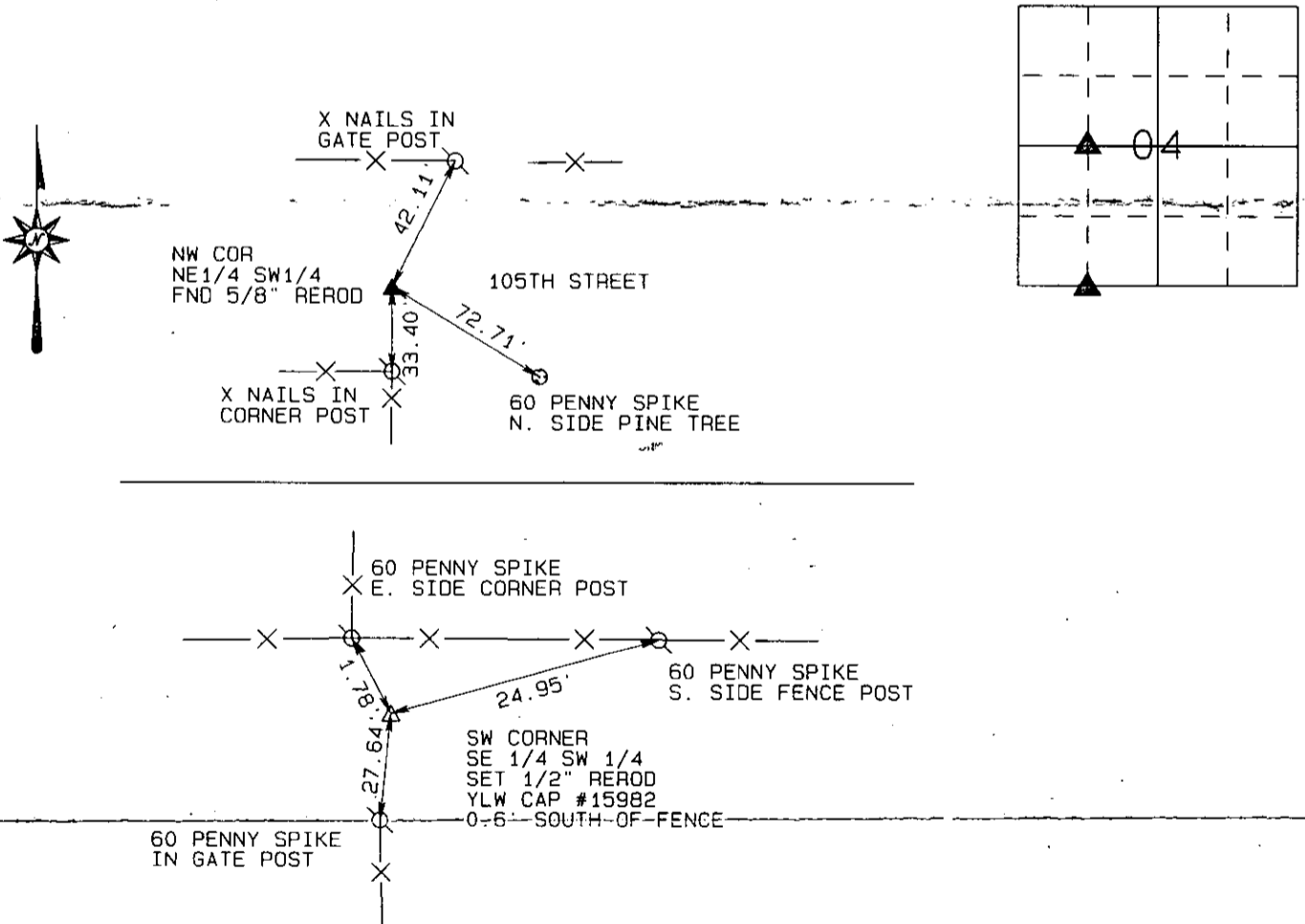
MONUMENT DESCRIPTION AND REMARKS:

NW CORNER NE 1/4 SW 1/4 - FOUND 5/8" REROD

SW CORNER SE 1/4 SW 1/4 - SET 1/2" REROD YLW CAP #15982 ON A 1/4 SPLIT
FROM SW CORNER TO SE CORNER OF SECTION

PLAN - VIEW

(Show a minimum of three reference ties to durable physical objects, relevant monuments and physical conditions that will enable recovery of the corner.)



(ALL DISTANCE ARE MEASURED HORIZONTAL UNLESS NOTED)

I hereby certify that this land surveying document was prepared and the related survey work was performed by me or under my direct personal supervision and that I am a duly licensed Land Surveyor, under the laws of the State of Iowa.

Signed *Vincent E. Piagentini* Date *9/19/06*



VINCENT E. PIAGENTINI, L.S., Iowa Reg. No 15982
MY LICENSE RENEWAL DATE IS - DECEMBER 31, 2004

PAGES OR SHEETS COVERED BY THIS SEAL: 1 OF 1

Corners to be Indexed			
Corner	Section	Twp.	Range
NW COR NE 1/4 SW 1/4	04	77	27
SW COR SE 1/4 SW 1/4	04	77	27