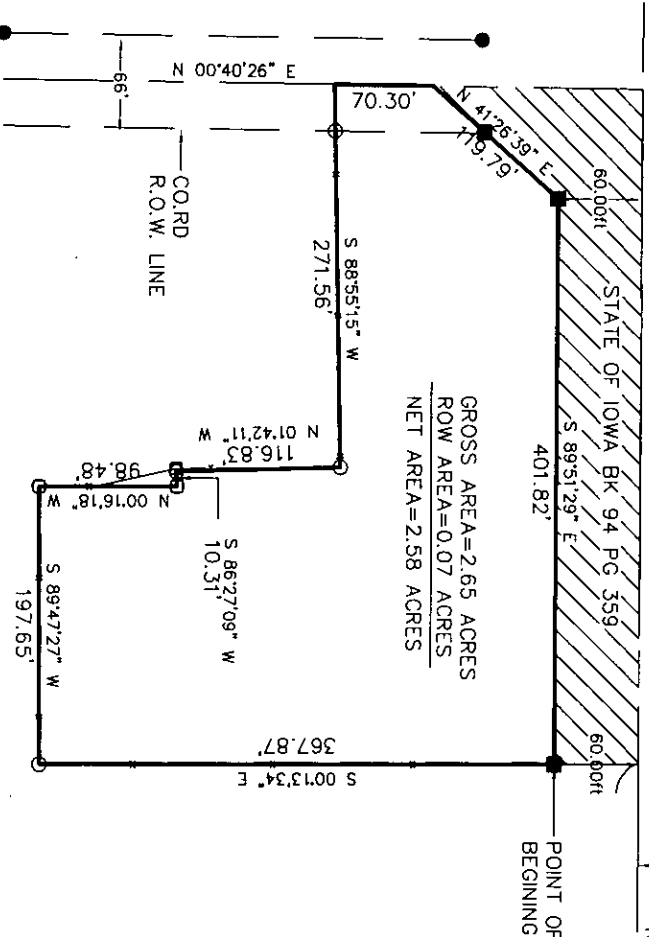


TO N 1/4 COR  
SET P-K NAIL FROM TIES  
N 89°50'18" W  
2615.90'

CENTERLINE STATE HIGHWAY #92

N 89°50'18" W  
341.89'  
NE COR  
FOUND P-K NAIL  
IN PAVEMENT

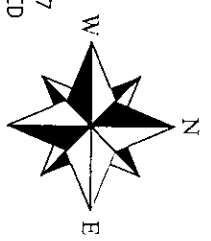


GROSS AREA=2.65 ACRES  
ROW AREA=0.07 ACRES  
NET AREA=2.58 ACRES



LEGEND

- ROAD CENTERLINE
- PROPERTY LINE
- SECTION LINE
- FENCE
- 1/2" PIN SET O.C. #13427
- IRON PIN FOUND AS NOTED
- LAND CORNER AS NOTED



LEGAL DESCRIPTION (FROM BOOK 143 PAGE 175)

A TRACT OF LAND DESCRIBED AS COMMENCING AT THE NORTHEAST CORNER OF THE NORTHEAST 1/4 OF SECTION 1, TOWNSHIP 75 NORTH, RANGE 29 WEST OF THE 5TH P.M., MADISON COUNTY, IOWA, DESCRIBED AS COMMENCING AT THE NORTHEAST CORNER OF SAID SECTION 1; THENCE N 89°50'18" W A DISTANCE OF 341.89'; THENCE S 00°13'34" E A DISTANCE OF 60.00' TO THE POINT OF BEGINNING; THENCE S 00°13'34" E A DISTANCE OF 367.87'; THENCE S 89°47'27" W A DISTANCE OF 197.65'; THENCE N 00°16'18" W A DISTANCE OF 98.48'; THENCE S 86°27'09" W A DISTANCE OF 10.31'; THENCE N 01°42'11" W A DISTANCE OF 116.83'; THENCE S 88°55'15" W A DISTANCE OF 271.56'; THENCE N 00°40'26" E A DISTANCE OF 70.30'; THENCE N 41°26'39" E A DISTANCE OF 119.79'; THENCE S 89°51'29" E A DISTANCE OF 401.82' TO THE POINT OF BEGINNING, CONTAINING 2.63 ACRES INCLUDING 0.07 ACRES OF COUNTY ROAD RIGHT OF WAY.

LEGAL DESCRIPTION (AS SURVEYED)

ALL THAT PART OF THE NORTHEAST 1/4 OF THE NORTHEAST 1/4 OF SECTION 1, TOWNSHIP 75 NORTH, RANGE 29 WEST OF THE 5TH P.M., MADISON COUNTY, IOWA, DESCRIBED AS COMMENCING AT THE NORTHEAST CORNER OF SAID SECTION 1; THENCE N 89°50'18" W A DISTANCE OF 341.89'; THENCE S 00°13'34" E A DISTANCE OF 60.00' TO THE POINT OF BEGINNING; THENCE S 00°13'34" E A DISTANCE OF 367.87'; THENCE S 89°47'27" W A DISTANCE OF 197.65'; THENCE N 00°16'18" W A DISTANCE OF 98.48'; THENCE S 86°27'09" W A DISTANCE OF 10.31'; THENCE N 01°42'11" W A DISTANCE OF 116.83'; THENCE S 88°55'15" W A DISTANCE OF 271.56'; THENCE N 00°40'26" E A DISTANCE OF 70.30'; THENCE N 41°26'39" E A DISTANCE OF 119.79'; THENCE S 89°51'29" E A DISTANCE OF 401.82' TO THE POINT OF BEGINNING, CONTAINING 2.63 ACRES INCLUDING 0.07 ACRES OF COUNTY ROAD RIGHT OF WAY.

I HEREBY CERTIFY THAT THIS LAND SURVEYING DOCUMENT WAS PREPARED AND THE RELATED SURVEY WORK WAS PERFORMED BY ME OR UNDER MY DIRECT PERSONAL SUPERVISION AND THAT I AM A DULY LICENSED LAND SURVEYOR UNDER THE LAWS OF THE STATE OF IOWA.

SIGNATURE: *Craig S. Boldman*

NAME: CRAIG S. BOLDMAN

DATE: 10/12/06

MY LICENSE/RENEWAL DATE IS: DECEMBER 31, 2006



**RETRACEMENT**

REQUESTED BY:	BOLDMAN SURVEYING CONSULTANTS, L.L.C.
REMAX REALTY	P.O. BOX 66
SURVEYED	WINTERSSET, JA. 50273
10/12/06	(515)462-9242
PROJECT NO.	06073
DATE	10/13/06
OWNER	JACKIE DEVORE