

MICHELLE UTSLER, COUNTY RECORDER
MADISON IOWA

VANCE & HOCHSTETLER, P.C., CONSULTING ENGINEERS, WINTERSSET, IOWA (515) 462-3995
06-1135 CHARLES T. VANCE, 110 West Green St., Winterset, Iowa, 50273
JAMES M HOCHSTETLER, 110 West Green St., Winterset, Iowa 50273

COMPUTER	<input checked="" type="checkbox"/>
RECORDED	<input checked="" type="checkbox"/>
COMPARED	<input type="checkbox"/>

UNITED STATES PUBLIC LAND SURVEY CORNER CERTIFICATE

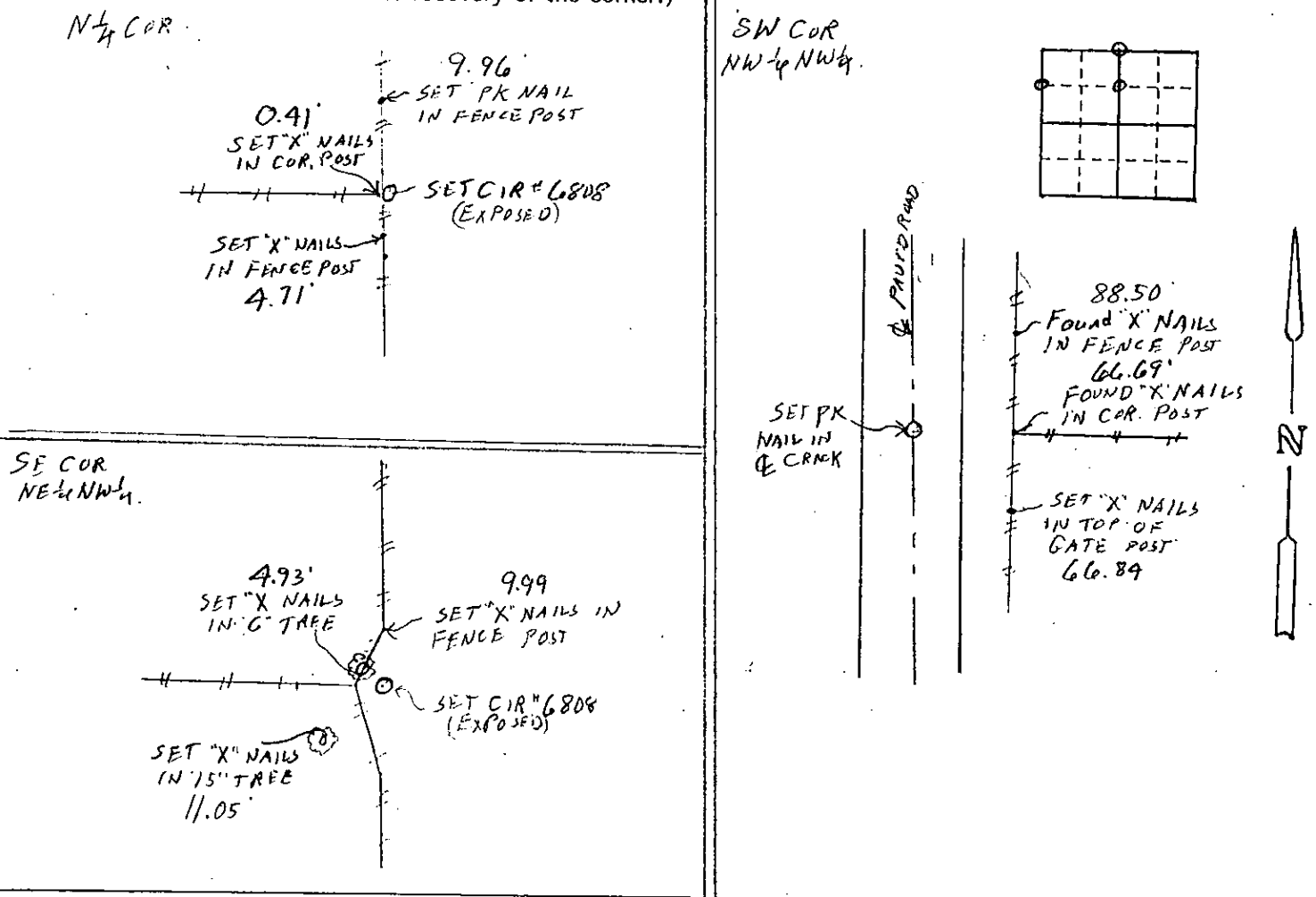
Land Survey Monuments situated in Section 27 OF Township 77 N Range 29 W of the Fifth Principal Meridian, MADISON County, Iowa.
Previously recorded in _____ in County Recorder's Office.
(book, page, document number, etc.)

(Show reason for preparing this certificate, the evidence and detailed procedures used in establishing the the corner positions and monumentation found or placed.)

Monument Description and Remarks: N¹/₄ COR - Set yellow CIR #6808 at intersection of North/South property line fence with property line fence from West.
SE COR NE¹/₄ NW¹/₄ - Set yellow CIR #6808 at intersection of North/South property line fence & projected property line fence from West.
SW COR NW¹/₄ NW¹/₄ - Could not find Nail previously tied as SE COR NE¹/₄ NW¹/₄ of Section 28-77-29. We set PK Nail on line at midpoint between found NW COR and W¹/₄ Cor.

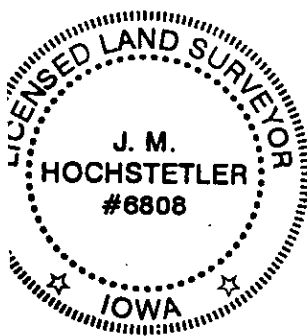
PLAN - VIEW

(Show a minimum of three reference ties to durable physical objects, relevant monuments and physical conditions that will enable recovery of the corner.)



List Corners to be Indexed

Corners	Section	Twp	Range
N ¹ / ₄ COR	27	77N	29W
SE COR NE ¹ / ₄ NW ¹ / ₄	27	77N	29W
SW COR NW ¹ / ₄ NW ¹ / ₄	27	77N	29W



I hereby certify that this land surveying document was prepared and the related survey work was performed by me or under my direct personal supervision and that I am a duly licensed Land Surveyor under the laws of the State of Iowa.

J.M. Hochstetler
 J.M. HOCHSTETLER
 License number 6808 Date 7/20/06
 My license renewal date is December 31, 2007
 Pages or sheets covered by this seal: 1