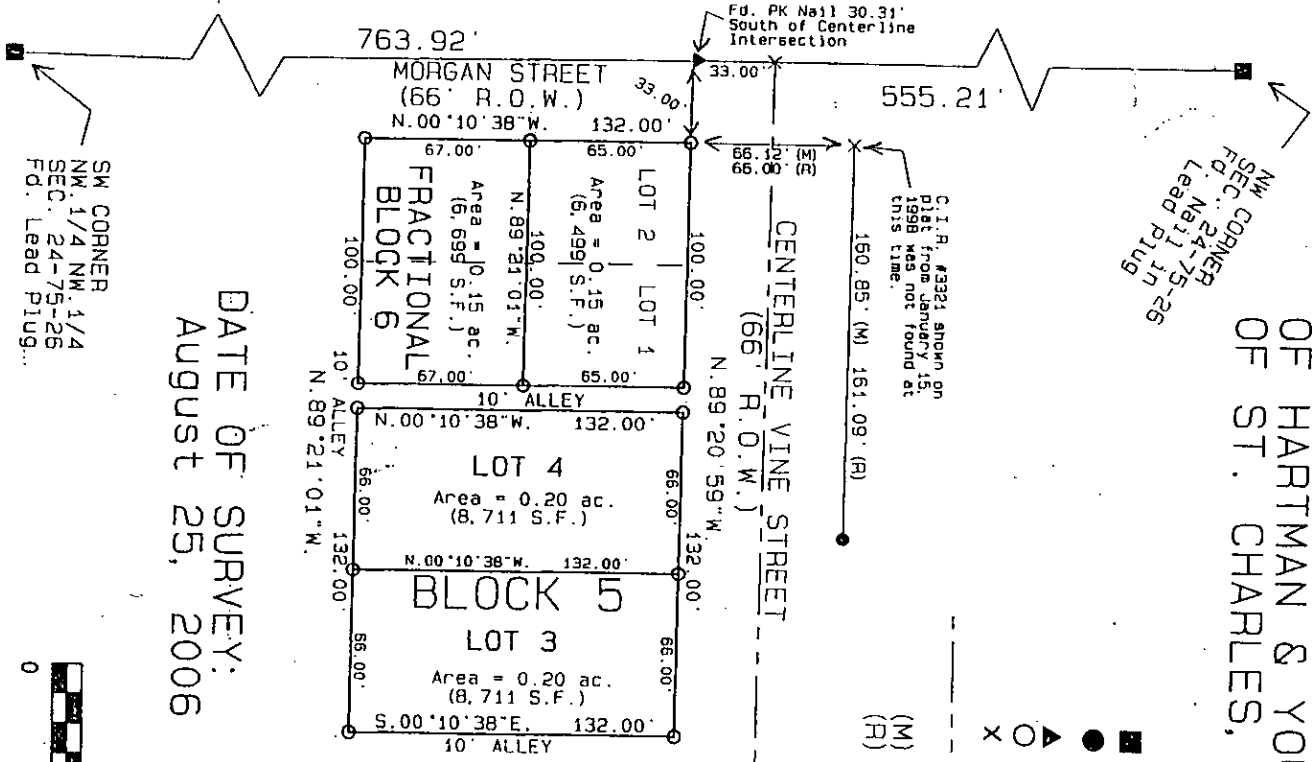


MICHELLE UTSLER, COUNTY RECORDER  
MADISON IOWA

COMPUTER   
RECORDED   
COMPARED

VANCE & HOCHSTETLER, P.C. CONSULTING ENGINEERS, WINTERSSET, IOWA (515)462-3995  
16-1193 CHARLES T. VANCE, 110 WEST GREEN ST., WINTERSSET, IOWA 50273-1533  
JAMES M. HOCHSTETLER, 110 WEST GREEN ST., WINTERSSET, IOWA 50273-1533

S. 00°10'37"E. 1319.13' (M) 1319.2' (R)



A PLAT OF SURVEY FOR DALE E. & CONNIE K. KEPHART,  
OF LOTS THREE (3) & FOUR (4) IN BLOCK FIVE (5) &  
LOTS ONE (1) & TWO (2) IN FRACTIONAL BLOCK SIX (6)  
OF HARTMAN & YOUNG'S ADDITION TO THE ORIGINAL TOWN  
OF ST. CHARLES, MADISON COUNTY, IOWA.

DATE OF SURVEY:  
August 25, 2006

SW CORNER  
NW 1/4 NW 1/4  
SEC. 24-75-26  
Fd. Lead Plug

NW CORNER  
SEC. 24-75-26  
Fd. Nail 1 1/2  
Lead Plug

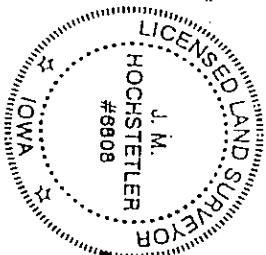
C.I.R. #3321 shown on  
plat from January 15,  
1998 was not found at  
this time.

- Fd. Lead Plug
- Fd. Capped Iron Rod
- ▲ (C.I.R.) #6808
- Fd. PK Nail
- Set C.I.R. #6808
- No Monument Set/Found
- Existing Street
- Centerline
- Measured Dimension
- Recorded Dimension

LEGEND

LEGAL DESCRIPTION:

Lots Three (3) & Four (4) of Block Five (5), and Lots One (1) & Two (2) of Fractional Block Six (6) of Hartman & Young's Addition to the Original Town of St. Charles, Madison County, Iowa. This survey divides Lots 1 & 2 of said Fractional Block 6 into two parcels. The North 65 feet and the South 67 feet, as shown on this plat of survey.



I hereby certify that this land surveying document was prepared and the related survey work was performed by me or under my direct personal supervision and that I am a duly licensed Land Surveyor under the laws of the State of Iowa.  
J.M. HOCHSTETLER  
License number 6908 Date 9/11/04  
My license renewal date is December 31, 2007  
Pages or sheets covered by this seal: 1

